



EASTON



2023

BASEBALL & SOFTBALL
COLLECTION

EASTON.COM



Alex Bregman
Houston Infielder

Jacob Nottingham
Baltimore Catcher

Austin Hedges
Cleveland Catcher

Max Stassi
Los Angeles Catcher

Seby Zavala
Chicago Catcher

TEAM EASTON

BASEBALL



NCAA BASEBALL PROGRAMS



#1 Bat in College World Series® History claim based on College World Series data (titles, at-bats, hits and home runs), since NCAA adoption of non-wood bats, as reported by the NCAA®, together with data from Easton Diamond Sports, LLC. ©2022 Little League Baseball, Incorporated. All Rights Reserved.



OFFICIAL PARTNER OF LITTLE LEAGUE BASEBALL®



#1 Bat of the Little League Baseball® World Series claim based on Little League Baseball World Series data (titles, at-bats, hits and home runs), since 2011, as reported by Little League Baseball®, together with data from Easton Diamond Sports, LLC. ©2022 Little League Baseball, Incorporated. All Rights Reserved.

Nadia Taylor
Athletes Unlimited,
Infielder

Jen Schroeder
Catching Coach

Haylie McCleney
Team USA &
Athletes Unlimited,
Outfielder

Sam Fischer
Athletes Unlimited,
Infielder

Morgan Stuart
Defense Coach

TEAM EASTON
FASTPITCH





NCAA SOFTBALL PROGRAMS



#1 Bat in College World Series® History claim based on College World Series data (titles, at-bats, hits and home runs), since NCAA adoption of non-wood bats, as reported by the NCAA®, together with data from Easton Diamond Sports, LLC.



TRAVEL BALL SOFTBALL PROGRAMS

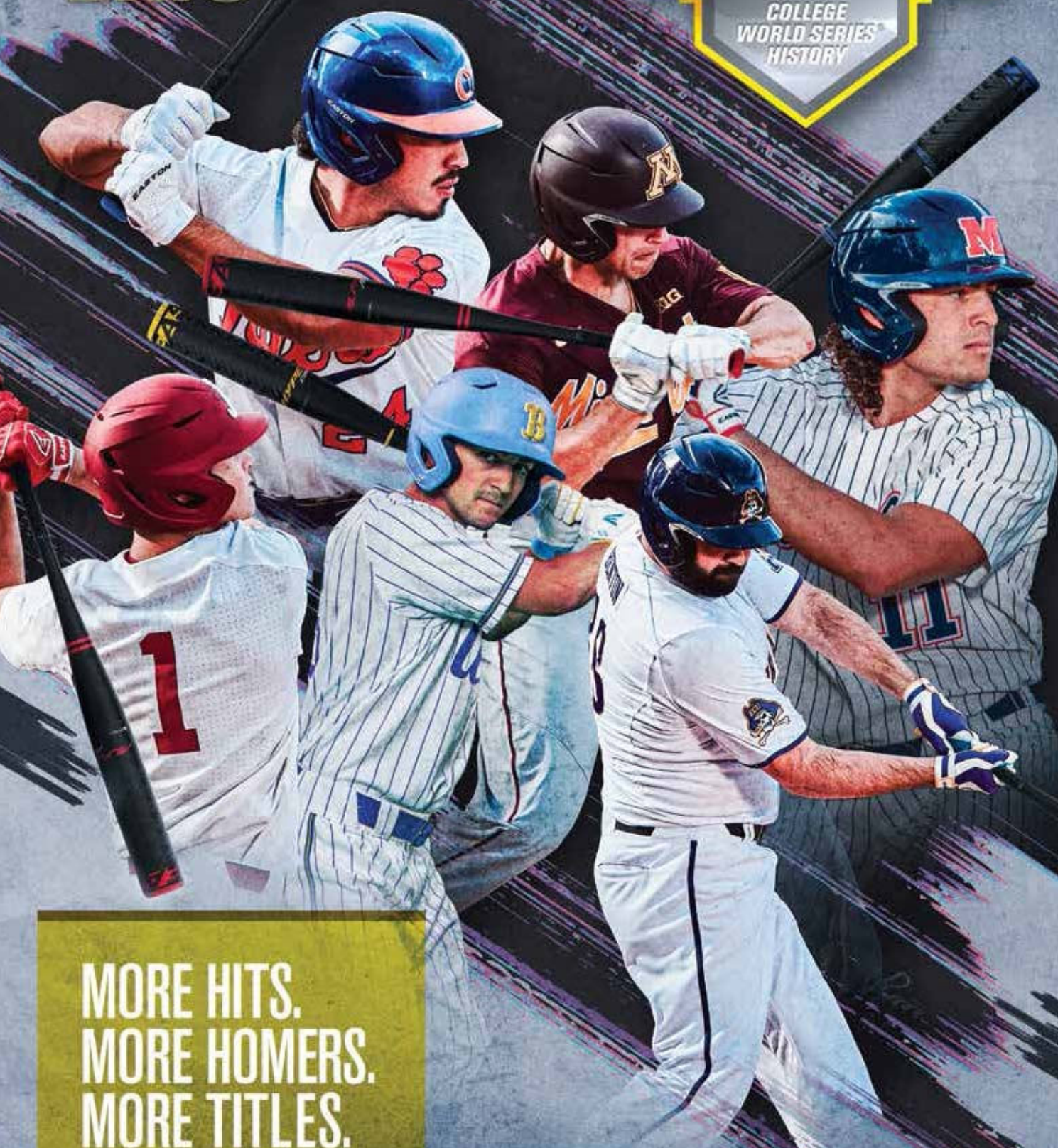


OFFICIAL PARTNER OF LITTLE LEAGUE SOFTBALL®



#1 Bat of the Little League Baseball® World Series claim based on Little League Baseball World Series data (titles, at-bats, hits and home runs), since 2011, as reported by Little League Baseball®, together with data from Easton Diamond Sports, LLC. ©2022 Little League Baseball, Incorporated. All Rights Reserved.

BASEBALL BATS



MORE HITS.
MORE HOMERS.
MORE TITLES.

THAN ANY OTHER BRAND
IN CWS HISTORY.

#1 BAT IN COLLEGE WORLD SERIES® HISTORY CLAIM BASED ON COLLEGE WORLD SERIES DATA (TITLES, AT BATS, HITS AND HOME RUNS), SINCE NCAA ADOPTION OF NON-WOOD BATS, AS REPORTED BY THE NCAA®, TOGETHER WITH DATA FROM EASTON DIAMOND SPORTS, LLC.

HYPE HYPE COMP HYPE

BBCOR
CERTIFIED .50



CONNEXION Max

Maximizes energy transfer with an even stiffer feel on contact, and injected with Nitrocell™ foam to help dramatically reduce vibration.

THERMO COMPOSITE TECHNOLOGY

Speed = Power

Combines a massive barrel and sweet spot for the lightest swinging bat in Easton's lineup, delivering explosive power.



POWER BOOST™ SOFT KNOB TECHNOLOGY

Provides hitters with more leverage, while reducing vibration and improving comfort for the bottom hand.

PRO-STIFF CARBON HANDLE™

Designed with extra-stiff carbon fibers to create a more-solid handle, giving the most elite athletes that stiff feel they love.



NEW

Hype™ Comp -3 2-Piece Composite

2 $\frac{3}{8}$

BB23HC

30/27 31/28 32/29 33/30 34/31

- Thermo Composite Technology™ Combines a massive barrel and sweet spot for the lightest swinging bat in Easton's lineup, delivering explosive power
- ConneXion Max™ Maximizes energy transfer with an even stiffer feel on contact, and injected with Nitrocell™ foam to help dramatically reduce vibration
- Power Boost™ "Soft Knob" Technology Provides hitters with more leverage, while reducing vibration and improving comfort for the bottom hand

- Pro-Stiff Carbon Handle™ Designed with extra-stiff carbon fibers to create a more-solid handle, giving the most elite athletes that stiff feel they love
- Premium Sound The combination of Thermo Composite Technology and a rolled end cap delivers a forceful and dynamic composite 'pop' sound, building confidence with every swing
- Flow-Tack™ Grip Easton's most-premium grip provides the ultimate combination of cushion and tack
- Certification: BBCOR



ENCORE

HYBRID

BBCOR
CERTIFIED .50

BATBALL ONLY
1.15
BPF
NHS TESTED
USCSA

ENCORE ENCORE HYBRID ENCORE

BBCOR
CERTIFIED 50

1.15
EPF
MAXIMUM
LBS/IN



PURELYNK CXN

Less Barrel Flex = More Power.

Connects the handle directly to the barrel. Maximizing stiffness, energy transfer and power at contact.

COMPCORE TECHNOLOGY

Ringless R5™ alloy barrel is thinned out by 30% and internally backed with Thermo Composite Technology™ across the length of the hitting surface, creating a thinner barrel wall, bigger sweet spot and maximizing the trampoline effect.



POWER BOOST™ SOFT KNOB TECHNOLOGY™

Provides hitters with more leverage, while reducing vibration and improving comfort for the bottom hand.

PRO-STIFF™ CARBON HANDLE™

Designed with extra-stiff carbon fibers to create a more-solid handle, giving the most elite athletes that stiff feel they love.



NEW

Encore™ Hybrid 2-Piece Hybrid

2⁹/₈

BB23EN

31/28 32/29 33/30 34/31

- **CompCore Technology™** Ringless R5™ alloy barrel is thinned out by 30% and internally backed with Thermo Composite Technology™ across the length of the hitting surface, creating a thinner barrel wall, bigger sweet spot and maximizing the trampoline effect
- **PureLynk CXN™** Connects the handle directly to the barrel maximizing overall stiffness, energy transfer and power at contact
- **Power Boost™ "Soft Knob" Technology™** Provides hitters with more leverage, while reducing vibration and improving comfort for the bottom hand
- **Pro-Stiff Carbon Handle™** Designed with extra-stiff carbon fibers to create a more-solid handle, giving the most elite athletes that stiff feel they love
- **Premium Sound™** The unique combination of a thinner alloy barrel backed by composite, CompCore Technology, delivers a truly unique sound profile that is both bright and powerful, building confidence with every swing
- **Flow-Tack™ Grip™** Easton's most-premium grip provides the ultimate combination of cushion and tack
- **Premium Sound™** Sound is a critical element of feel and confidence. The unique combination of a thinner alloy barrel backed by composite, with CompCore Technology, delivers a truly unique sound profile that is both bright and powerful. A sound that is sure to build confidence every time you step into the box, and also cause defenses to take a step or two back.
- **Certification:** BBCOR

ALPHA ALPHA ALX

BBCOR
CERTIFIED .50



R5 ALLOY

Designed with a lightweight, high-performing alloy, providing a high barrel response and great durability.

FLYWALL BARREL DESIGN

Ringless barrel design that utilizes different layers of alloy across the barrel to create an even bigger sweet spot and a smoother feel at contact.



POWER BOOST™ SOFT KNOB TECHNOLOGY

Provides hitters with more leverage, while reducing vibration and improving comfort for the bottom hand.

FLOW-TACK™ GRIP

Easton's most-premium grip provides the ultimate combination of cushion and tack.



NEW

Alpha ALX™ -3 1-Piece Aluminum

2⁹/₈

BB23AL

30/27 31/28 32/29 33/30 34/31

- R5™ Alloy _ Designed with a lightweight, high-performing alloy, providing a high barrel response and great durability
- FlyWall™ Barrel Design _ Ringless barrel design that utilizes different layers of alloy across the barrel to create an even bigger sweet spot and a smoother feel at contact
- Power Boost™ "Soft Knob" Technology _ Provides hitters with more leverage, while reducing vibration and improving comfort for the bottom hand

- Premium Sound _ The combination of the R5™ Alloy and FlyWall™ Barrel Design delivers a loud 'ping' that an alloy bat is made to sound like, building confidence with every swing
- Flow-Tack™ Grip _ Easton's most-premium grip provides the ultimate combination of cushion and tack
- Certification: BBCOR





Quantum™ -3

1-Piece Aluminum

2⁵/₈

BB22QUAN

31/28 32/29 33/30 34/31

- Lightweight and durable ALX100™ Performance Alloy Construction
- Forged end cap
- Cushioned 2.2mm Flex Grip provides comfort in hands
- Certification: BBCOR



Speed™ -3

1-Piece Aluminum

2⁵/₈

BB22SPD

30/27 31/28 32/29 33/30 34/31

- Lightweight and durable ALX50™ Alloy Construction
- Forged end cap
- Cushioned 2.2 mm Flex Grip provides comfort in hands
- Certification: BBCOR



Fungo F4

35/22

- Aluminum infield and outfield fungo
- Thin 31/32" handle with pro-taped grip

ASTON



HYPE

— COMP

BBCOR .50





NEW

Hype Comp™ -10

2-Piece Composite

2³/₄

SL23HC10

27/17 28/18 29/19 30/20 31/21

NEW

Hype Comp™ -8

2-Piece Composite

2³/₄

SL23HC8

29/21 30/22 31/23 32/24

NEW

Hype Comp™ -5

2-Piece Composite

2⁵/₈

SL23HC58

30/25 31/26 32/27

- Thermo Composite Technology™ Combines a massive barrel and sweet spot for the lightest swinging bat in Easton's lineup, delivering explosive power
- ConneXion Max™ Maximizes energy transfer with an even stiffer feel on contact, and injected with Nitrocell™ foam to help dramatically reduce vibration
- Power Boost™ "Soft Knob" Technology Provides hitters with more leverage, while reducing vibration and improving comfort for the bottom hand
- Pro-Stiff Carbon Handle™ Designed with extra-stiff carbon fibers to create a more-solid handle, giving the most elite athletes that stiff feel they love

- Premium Sound The combination of Thermo Composite Technology and a rolled end cap delivers a forceful and dynamic composite 'pop' sound, building confidence with every swing
- Flow-Tack™ Grip Easton's most-premium grip provides the ultimate combination of cushion and tack
- Certification: USSSA



NEW

Encore™ Hybrid -10

2-Piece Hybrid

2³/₄

SL23EN10

27/17 28/18 29/19 30/20 31/21

NEW

Encore™ Hybrid -5

2-Piece Hybrid

2⁵/₈

SL23EN58

30/25 31/26 32/27

- CompCore Technology™ Ringless R5™ alloy barrel is thinned out by 30% and internally backed with Thermo Composite Technology™ across the length of the hitting surface, creating a thinner barrel wall, bigger sweet spot and maximizing the trampoline effect
- PureLynk CXN™ Connects the handle directly to the barrel maximizing overall stiffness, energy transfer and power at contact
- Power Boost™ "Soft Knob" Technology Provides hitters with more leverage, while reducing vibration and improving comfort for the bottom hand
- Pro-Stiff Carbon Handle™ Designed with extra-stiff carbon fibers to create a more-solid handle, giving the most elite athletes that stiff feel they love

- Premium Sound The unique combination of a thinner alloy barrel backed by composite, CompCore Technology, delivers a truly unique sound profile that is both bright and powerful, building confidence with every swing
- Flow-Tack™ Grip Easton's most-premium grip provides the ultimate combination of cushion and tack
- Premium Sound Sound is a critical element of feel and confidence. The unique combination of a thinner alloy barrel backed by composite, with CompCore Technology, delivers a truly unique sound profile that is both bright and powerful. A sound that is sure to build confidence every time you step into the box, and also cause defenses to take a step or two back.
- Certification: USSSA



NEW

Alpha ALX™ -10	2 ³ / ₄	SL23AL10	27/17	28/18	29/19	30/20	31/21
1-Piece Aluminum							

NEW

Alpha ALX™ -8	2 ³ / ₄	SL23AL8	29/21	30/22	31/23	32/24
1-Piece Aluminum						

NEW

Alpha ALX™ -5	2 ⁵ / ₈	SL23AL58	30/25	31/26	32/27
1-Piece Aluminum					

- R5™ Alloy _ Designed with a lightweight, high-performing alloy, providing a high barrel response and great durability
 - FlyWall™ Barrel Design _ Ringless barrel design that utilizes different layers of alloy across the barrel to create an even bigger sweet spot and a smoother feel at contact
 - Power Boost™ "Soft Knob" Technology _ Provides hitters with more leverage, while reducing vibration and improving comfort for the bottom hand
- Premium Sound _ The combination of the R5™ Alloy and FlyWall™ Barrel Design delivers a loud 'ping' that an alloy bat is made to sound like, building confidence with every swing
 - Flow-Tack™ Grip _ Easton's most-premium grip provides the ultimate combination of cushion and tack
 - Certification: USSSA



Quantum™ -10	2 ⁵ / ₈	SL22QUAN108	28/18	29/19	30/20	31/21	32/22
1-Piece Aluminum							

- Lightweight and durable ALX100™ Performance Alloy Construction
 - Cushioned 2.2mm Flex Grip provides comfort in hands
- Concave end cap
 - Certification: USSSA 1.15 BPF



NEW

Hype Comp1™ -12
1-Piece Composite

2³/₄

JBB23HC12

25/13 26/14 27/15

- Thermo Composite Technology™ Combines a massive barrel and sweet spot for the lightest swinging bat in Easton's lineup, delivering explosive power
- Cushioned 2.2mm Flex Grip provides comfort in hands
 - Certification: USSSA



NEW

Alpha ALX™ -10
1-Piece Aluminum

2³/₄

JBB23AL10

25/15 26/16 27/17

- R5™ Alloy Designed with a lightweight, high-performing alloy, to give you a high barrel response rate and great durability
 - FlyWall™ Barrel Design Ringless barrel design that utilizes different layers of alloy across the barrel to create an even bigger sweet spot and a smoother feel at contact
- Spoked end cap
 - Cushioned 2.2mm Flex Grip provides comfort in hands
 - Certification: USSSA



NEW

Speed™ -11
1-Piece Aluminum

2⁵/₈

JBB22SPD11

25/14 26/15 27/16

- Lightweight and durable ALX50™ Alloy Construction
 - Cushioned 2.2 mm Flex Grip provides comfort in hands
- Concave end cap
 - Certification: USSSA 1.15 BPF



NEW

ADV 360™ -11 2-Piece Composite	2 $\frac{7}{8}$	YBB23ADV11	27/16	28/17	29/18	30/19	31/20
--	-----------------	------------	-------	-------	-------	-------	-------

NEW

ADV 360™ -10 2-Piece Composite	2 $\frac{7}{8}$	YBB23ADV10	28/18	29/19	30/20	31/21	32/22
--	-----------------	------------	-------	-------	-------	-------	-------

NEW

ADV 360™ -8 2-Piece Composite	2 $\frac{7}{8}$	YBB23ADV8	30/22	31/23	32/24		
---	-----------------	-----------	-------	-------	-------	--	--

NEW

ADV 360™ -5 2-Piece Composite	2 $\frac{7}{8}$	YBB23ADV5	30/25	31/26	32/27		
---	-----------------	-----------	-------	-------	-------	--	--

- Launch Comp_™ Technology _ Delivers a bigger barrel contour with a massive sweet spot, combined with high performance straight out of the wrapper
- iSo 2-Piece CXN_™ _ Isolates the handle from the barrel, using Nitrocell_™ foam to reduce vibration, while creating a stiff feel to transfer more energy back into the ball at contact
- Power Boost_™ "Soft Knob" Technology _ Provides hitters with more leverage, while reducing vibration and improving comfort for the bottom hand
- DFS_™ Carbon Handle _ Dynamic Feel System_™, a stiff composite handle design, gives a more solid feel at contact with zero vibration
- Speed Cap_™ provides a more flexible and responsive barrel
- Flow-Tack_™ Grip _ Easton's most premium grip provides the ultimate combination of cushion and tack in a tri-color design
- Certification: USA Baseball



**NEW****ADV1™ -12****1-Piece Composite**

- Launch Comp™ Technology _ Delivers a bigger barrel contour with a massive sweet spot, combined with high performance straight out of the wrapper
- The Carbon Zero Handle is built from 90% carbon fiber and constructed with a zero-degree layup, creating an extra stiff handle for almost zero vibration and an ultra-solid feel

- Speed Cap™ provides a more flexible and responsive barrel with a natural sound on impact
- Flow-Tack™ Grip _ Easton's most-premium grip provides the ultimate combination of cushion and tack in a tri-color design
- Certification: USA Baseball

2⁵/₈

YBB23ADV12

27/15 28/16 29/17 30/18

**NEW****Alpha ALX™ -11****1-Piece Aluminum****NEW****Alpha ALX™ -8****1-Piece Aluminum**

- R5™ Alloy _ Designed with a lightweight, high-performing alloy, to give you a high barrel response and great durability
- Ultra-Lite Barrel Construction provides a lighter swing weight in order to provide more bat speed and control through the zone

- Flow-Tack™ Grip _ Easton's most premium grip provides the ultimate combination of cushion and tack in a tri-color design
- Certification: USA Baseball

2⁵/₈

YBB23AL11

27/16 28/17 29/18 30/19 31/20

2⁵/₈

YBB23AL8

30/22 31/23 32/24

**Speed™ Comp -13****1-Piece Composite****NEW****Speed™ Comp -10****1-Piece Composite**

- Engineered with Hyperlite™ Composite, Easton's lightest composite material, for the fastest swinging youth bat in the game
- The Carbon Zero Handle is built from 90% carbon fiber and constructed with a zero-degree layup, creating an extra-stiff handle for almost zero vibration and an ultra-solid feel

- Speed Cap™ provides a more flexible and responsive barrel
- Hyperlite™ Composite Swing Weight _ Allows for the most speed behind the ball at contact
- Cushioned 2.2mm Flex Grip provides comfort in hands
- Certification: USA Baseball

2⁵/₈

YBB22SPC13

26/13 27/14 28/15 29/16 30/17

2⁵/₈

YBB23SPC10

27/17 28/18 29/19 30/20 31/21



Reflex™ -12 1-Piece Aluminum	BIG BARREL	YBB21REF12	26/14	27/15	28/16	29/17	30/18
<ul style="list-style-type: none">• Lightweight and durable ALX100™ Performance Alloy Construction• Cushioned 2.2mm Flex Grip provides comfort in hands			<ul style="list-style-type: none">• Concave end cap• Certification: USA Baseball				



Quantum™ -11 1-Piece Aluminum	BIG BARREL	YBB21QUAN11	26/15	27/16	28/17	29/18	30/19	31/20
<ul style="list-style-type: none">• Lightweight and durable ALX100™ Performance Alloy Construction• Cushioned 2.2mm Flex Grip provides comfort in hands			<ul style="list-style-type: none">• Concave end cap• Certification: USA Baseball					



Quantum™ -5 1-Piece Aluminum	BIG BARREL	YBB21QUAN5	30/25	31/26	32/27
<ul style="list-style-type: none">• Lightweight and durable ALX100™ Performance Alloy Construction• Cushioned 2.2mm Flex Grip provides comfort in hands			<ul style="list-style-type: none">• Concave end cap• Certification: USA Baseball		



Speed™ -10 1-Piece Aluminum	BIG BARREL	YBB22SPD10	26/16	27/17	28/18	29/19	30/20	31/21	32/22
<ul style="list-style-type: none">• Lightweight and durable ALX50™ Alloy Construction• Cushioned 2.2mm Flex Grip provides comfort in hands			<ul style="list-style-type: none">• Concave end cap• Certification: USA Baseball						



Typhoon™ -12 1-Piece Aluminum <ul style="list-style-type: none"> • Lightweight and durable ALX100™ Performance Alloy Construction • Cushioned All-Sports Grip provides comfort in hands 	SMALL BARREL	YSB22TY12	26/14 27/15 28/16 29/17 30/18 31/19
---	--------------	-----------	---



Havoc™ -10 1-Piece Aluminum <ul style="list-style-type: none"> • Lightweight and durable ALX50™ Alloy Construction • Cushioned 2.2mm Flex Grip provides comfort in hands 	SMALL BARREL	YSB22HAV10	26/16 27/17 28/18 29/29 30/20 31/21
--	--------------	------------	---



ADV™ Tee Ball -13 1-Piece Composite <ul style="list-style-type: none"> • One-piece composite design with rolled end • Engineered with Hyperlite™ Composite, Easton's lightest composite material, for an extremely balanced swing weight 	BIG BARREL	TB22ADV13	24/11 25/12 26/13
--	------------	-----------	-----------------------



NEW

Alpha ALX™ Tee Ball -11 1-Piece Aluminum <ul style="list-style-type: none"> • One-piece big barrel design with concave end cap • Lightweight and durable ALX100™ Performance Alloy Construction 	BIG BARREL	TB23AL11	24/13 25/14 26/15
---	------------	----------	-----------------------



NEW

Quantum™ Tee Ball -10 1-Piece Aluminum <ul style="list-style-type: none"> • One-piece balanced design with rolled end • Lightweight and durable ALX50™ Alloy Construction 	SMALL BARREL	TB23QUAN10	24/14 25/15 26/16
---	--------------	------------	-----------------------

FASTPITCH BATS

EASTON

#1 BAT

WOMEN'S COLLEGE
WORLD SERIES
HISTORY

MORE HITS.
MORE HOMERS.
MORE TITLES.

THAN ANY OTHER BRAND
IN WCWS HISTORY.

#1 BAT IN WOMEN'S COLLEGE WORLD SERIES® HISTORY CLAIM BASED ON WOMEN'S COLLEGE WORLD SERIES DATA (TITLES, AT-BATS, HITS AND HOME RUNS) AS REPORTED BY NCAA®, TOGETHER WITH DATA FROM EASTON DIAMOND SPORTS, LLC.

GHOST UNLIMITED

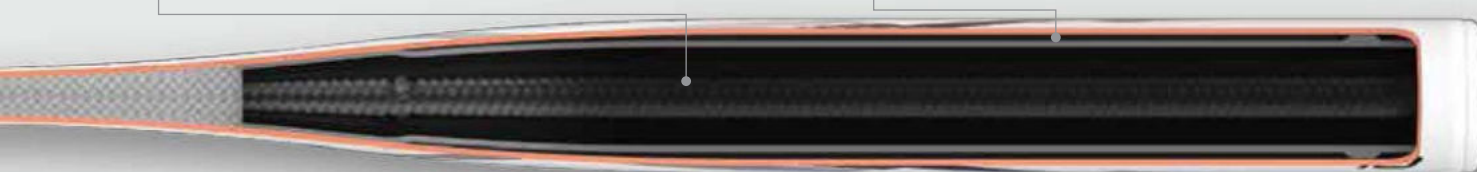


SONICCOMP MAX

Easton's highest-performing composite material, resulting in maximum performance with the lowest barrel compression and iconic sound heard across all fields.

DOUBLE BARREL EXT

1" longer Double Barrel EXT design provides the highest allowable performance across an even larger hitting area, creating an even bigger sweet spot.



POWER BOOST™ SOFT KNOB TECHNOLOGY

Provides hitters with more leverage, while reducing vibration and improving comfort for the bottom hand.

VRS 1

Lightweight reverse-engineered internal connection point, where the inner barrel meets the outer barrel. Alleviates weight to further optimize performance across an even longer barrel, while also minimizing vibration on mishits.



NEW

Ghost® Unlimited -10

Evenly-Balanced Double Barrel EXT Design

FP23GHUL10

30/20 31/21 32/22 33/23 34/24

NEW

Ghost® Unlimited -9

End-Loaded Double Barrel EXT Design

FP23GHUL9

32/23 33/24 34/25

NEW

Ghost® Unlimited -8

End-Loaded Double Barrel EXT Design

FP23GHUL8

33/25 34/26

- Double Barrel EXT 1" longer Double Barrel EXT design provides the highest allowable performance across an even larger hitting area, creating an even bigger sweet spot
- Sonic Comp_{II} Max Easton's highest-performing, even more durable composite, resulting in maximum performance with the lowest barrel compression and iconic sound heard across all fields
- VRS1 Lightweight reverse-engineered internal connection point, where the inner barrel meets the outer barrel, alleviating weight to further optimize performance across an even longer barrel, while also minimizing vibration on mishits

- Power Boost_{II} Soft Knob Technology Provides hitters with more leverage, while reducing vibration and improving comfort for the bottom hand
- Flow-Tack_{II} Grip Easton's most-premium grip provides the ultimate combination of cushion and tack.
- Certification: USA, USSSA (FASTPITCH ONLY), NSA, ISA, WBSC

A composite image featuring Haylie McCleney. The background is a large, semi-transparent image of her in a batting stance, wearing a red USA jersey and helmet. Overlaid on this are three smaller images of her in a dark blue USA jersey with the number 8. One image shows her holding a bat, another shows her smiling, and a third shows her in a batting stance. The text 'HAYLIE MCCLENEY' is repeated three times in a bold, sans-serif font, with the first instance being the largest and most prominent. The background also features a large, stylized American flag motif with stars and stripes.

HAYLIE MCCLENEY

HAYLIE MCCLENEY

HAYLIE MCCLENEY

Haylie #8

OLYMPIC SILVER MEDALIST • 2X WORLD CHAMPION • 4X NFCA ALL-AMERICAN

GHOST ADVANCED



SONICCOMP MAX

Easton's highest-performing, even more durable composite, resulting in maximum performance with the lowest barrel compression and iconic sound heard across all fields.

DOUBLE BARREL



Second-generation Double Barrel construction combines a lighter inner barrel with a stronger outer barrel, creating the lowest compression in the game for more barrel flex and even higher performance.



POWER BOOST™ SOFT KNOB TECHNOLOGY™

Provides hitters with more leverage, while reducing vibration and improving comfort for the bottom hand.



CONNEXION EVOLUTION™

Separates the handle from the barrel with the perfect amount of forgiveness, eliminating all vibration and creating the best-feeling, two-piece bat Easton has ever made.



Ghost® Advanced -11

Evenly-Balanced Double Barrel 2 Design

FP22GHAD11

29/18 30/19 31/20 32/21 33/22

Ghost® Advanced -10

Evenly-Balanced Double Barrel 2 Design

FP22GHAD10

30/20 31/21 32/22 33/23 34/24

Ghost® Advanced -9

End-Loaded Double Barrel 2 Design

FP22GHAD9

32/23 33/24 34/25

Ghost® Advanced -8

End-Loaded Double Barrel 2 Design

FP22GHAD8

33/25 34/26

- Patented Double Barrel 2 Design Second-generation Double Barrel construction combines a lighter inner barrel with a stronger outer barrel, creating the lowest compression in the game for more barrel flex and even higher performance
- Sonic Comp₂Max Easton's highest-performing, even more durable composite, resulting in maximum performance with the lowest barrel compression and iconic sound heard across all fields
- Power Boost₂ "Soft Knob" Technology Provides hitters more leverage and power potential, while reducing vibration and improving comfort for the bottom hand

- Two-piece ConneXion Evolution™ separates the handle from the barrel with the perfect amount of forgiveness, eliminating all vibration and creating the best-feeling, two-piece bat Easton has ever made
- Ultra-thin 29/32" handle with 1.8mm cushioned grip
- Certification: USA, USSSA (FASTPITCH ONLY), NSA, ISA, WBSC



FASTPITCH BATS



AVAILABLE JAN 2023

NEW

Ghost® -11

Evenly-Balanced Double Barrel Design

FP23GH11

29/18 30/19 31/20 32/21 33/22

NEW

Ghost® -10

Evenly-Balanced Double Barrel Design

FP23GH10

30/20 31/21 32/22 33/23 34/24

NEW

Ghost® -9

End-Loaded Double Barrel Design

FP23GH9

32/23 33/24 34/25

NEW

Ghost® -8

End-Loaded Double Barrel Design

FP23GH8

33/25 34/26

- Patented Double Barrel construction provides the best pop, feel and sound with a massive sweet spot
- Sonic Comp™ - High-performing, more durable composite, resulting in the lowest barrel compression with an iconic sound heard on all fields

- ConneXion™ - ConneXion™ Technology optimizes a more 'stiff' barrel flex and maximizes energy transfer while eliminating vibration
- Ultra-thin 29/32" handle with 1.8mm cushioned grip
- Certification: USA, USSSA (FASTPITCH ONLY), NSA, ISA, WBSC



AVAILABLE THRU DEC 2022

Ghost® -11

Evenly-Balanced Double Barrel Design

FP22GH11

29/18 30/19 31/20 32/21 33/22

Ghost® -10

Evenly-Balanced Double Barrel Design

FP22GH10

30/20 31/21 32/22 33/23 34/24

Ghost® -9

End-Loaded Double Barrel Design

FP22GH9

32/23 33/24 34/25

Ghost® -8

End-Loaded Double Barrel Design

FP22GH8

33/25 34/26

- Patented Double Barrel construction provides the best pop, feel and sound with a massive sweet spot
- Sonic Comp™ - High-performing, more durable composite, resulting in the lowest barrel compression with an iconic sound heard on all fields

- ConneXion™ - ConneXion™ Technology optimizes a more 'stiff' barrel flex and maximizes energy transfer while eliminating vibration
- Ultra-thin 29/32" handle with 1.8mm cushioned grip
- Certification: USA, USSSA (FASTPITCH ONLY), NSA, ISA, WBSC



Fire Fly™ -12

Evenly-Balanced 2-Piece Composite Design

FP22FF12

28/16 29/17 30/18 31/19 32/20

- Seamless Carbon Construction runs the length of the barrel, providing uniform strength and perfectly tuned max performance for a softer, more flexible barrel right out of the wrapper
- Two-piece ConneXion+™ Technology features Nitrocell™ foam, creating a lighter and better-feeling connection between handle and barrel
- Computer-controlled Precision Molding Technology produces an ultra-consistent, lightweight wall for optimal performance in every swing
- Evenly-balanced swing weight provides optimized balance point for fast swing speed
- Ultra-thin 29/32" handle with 1.8mm cushioned grip
- Certification: USA, USSSA (FASTPITCH ONLY), NSA, ISA, WBSC



Ghost® Youth -11

1-Piece Aluminum

FP22GHY11

26/15 27/16 28/17 29/18 30/19 31/20

- ALX50™ Alloy Construction for extended durability
- Ultra-thin 29/32" handle with All-Sports Grip
- Certification: USA, USSSA (FASTPITCH ONLY), NSA, ISA, WBSC



FASTPITCH BATS



Crystal™ -13

1-Piece Aluminum

- ALX100™ Alloy for fast swing speed
- Certification: USA, USSSA (FASTPITCH ONLY), NSA, ISA, WBSC
- Ultra-thin 29/32" handle with All-Sports Grip and concave end cap

FP22CRY

28/15 29/16 30/17 31/18 32/19 33/20



Sapphire™ -12

1-Piece Aluminum

- ALX100™ Alloy for fast swing speed
- Certification: USA, USSSA (FASTPITCH ONLY), NSA, ISA, WBSC
- Ultra-thin 29/32" handle with All-Sports Grip and concave end cap

FP22SAP

28/16 29/17 30/18 31/19 32/20 33/21



Amethyst™ -11

1-Piece Aluminum

- ALX50™ Alloy Construction for extended durability
- Certification: USA, USSSA (FASTPITCH ONLY), NSA, ISA, WBSC
- Ultra-thin 29/32" handle with All-Sports Grip and concave end cap

FP22AMY

27/16 28/17 29/18 30/19 31/20 32/21 33/22



Topaz™ -10

1-Piece Aluminum

- ALX50™ Alloy Construction for extended durability
- Certification: USA, USSSA (FASTPITCH ONLY), NSA, ISA, WBSC
- Ultra-thin 29/32" handle with All-Sports Grip and concave end cap

FP22TPZ

28/18 29/19 30/20 31/21 32/22 33/23



Pink Sapphire™ -10

1-Piece Aluminum

- ALX50™ Alloy Construction for extended durability
- Certification: USA, USSSA (FASTPITCH ONLY), NSA, ISA, WBSC
- Ultra-thin 29/32" handle with All-Sports Grip and concave end cap

FP22PSA

24/14 25/15 26/16 27/17 28/18 29/19 30/20





Ronin 240 Alloy

1-Piece Balanced Aluminum

SP21RA240

34/26 34/27

- ATAC Alloy™ The most premium alloy in Easton's product line, allowing for the thinnest barrel walls in order to maximize the barrel performance
- Barrel: 12"

- Cushioned 2.2mm Flex Grip provides comfort in hands
- Certification: USA, WBSC, USSSA (SLOWPITCH ONLY), NSA, ISA



Rival

1-Piece Loaded Aluminum

SP21RV

34/26 34/27 34/28

- Lightweight and durable ALX50™ Alloy Construction
- Barrel: 12"

- Cushioned All-Sports Grip provides comfort in hands
- Certification: USA, WBSC, USSSA (SLOWPITCH ONLY), NSA, ISA



Rebel

1-Piece Loaded Aluminum

SP21RB

33/26 34/28 34/30

- Lightweight and durable ALX50™ Alloy Construction
- Barrel: 12"

- Cushioned All-Sports Grip provides comfort in hands
- Certification: USA, WBSC, USSSA (SLOWPITCH ONLY), NSA, ISA



Hammer

1-Piece Loaded Aluminum

SP21HM

32/25 33/26 34/28

- Lightweight and durable ALX50™ Alloy Construction
- Barrel: 12"

- Cushioned All-Sports Grip provides comfort in hands
- Certification: USA, WBSC, USSSA (SLOWPITCH ONLY), NSA, ISA

BALL GLOVES



Professional Collection Kip

- Handcrafted with lightweight, tight-grained, premium Japanese Reserve Kip leather
- Kip palm lining and finger stalls for supple feel
- Kip binding and rolled welting allow for quick break-in and a custom formed pocket
- Ideal Fit System
 - Loopless thumb channel for a more comfortable and secure fit
 - Laceless palm lining for a butter-smooth feel
 - Repositioned pinkie loop allows for two fingers in the pinkie stall
- Professional-grade USA-tanned rawhide lace, tested to a tensile strength of 100 lbs.
- Breathable and water resistant Ax® Suede microfiber wrist liner



PCK-M21
11.5" Neutral Infield Pattern

I-Web | RHT



PCK-D32B
11.75" Deep Infield Pattern

Braided Single Post Web | RHT



PCK-D45
12" Deep Pitcher Pattern

2-Piece Solid Web | RHT/LHT



PCK-L73
12.75" Outfield Pattern

H-Web | RHT/LHT



PCK-H40
34" Catcher's Mitt

1-Piece Solid Web | RHT



Professional Collection Hybrid

- Hybrid Construction Durable USA chrome-tanned Horween® steerhide leather palm and lining, combined with a lightweight Japanese-tanned Professional Reserve steer hide shell back
- Professional grade USA-tanned rawhide lace, tested to a tensile strength of 100 lbs.
- Rolled leather welting allows for quick break-in and a custom formed pocket
- Steer hide binding, for increased durability
- Repositioned pinkie loop allows for two fingers in the pinkie stall
- Luxurious sheep wool shearling fur wrist liner



PCH-M21
11.5" Neutral Infield Pattern
I-Web RHT



PCH-M31
11.75" Neutral Infield Pattern
I-Web RHT



PCH-C32
11.75" Neutral Infield Pattern
Single Post Web RHT



PCH-C43
12" Neutral Infield Pattern
H-Web RHT



PCH-D35
11.75" Deep Pitcher Pattern
2-Piece Solid Web RHT/LHT



PCH-L73
12.75" Outfield Pattern
H-Web RHT/LHT



PCH-L710
12.75" Outfield Pattern
Six-Finger Trap Web RHT/LHT



PCH-K70B
12.75" First Base Mitt
Braided Single Post Web RHT/LHT



PCH-H35
33.5" Catcher's Mitt
1-Piece Solid Web RHT



Flagship™ Series

- Diamond Pro Steer™ leather shell
- Classic cowhide palm lining and finger stalls, for maximum comfort and feel
- Professional-grade USA-tanned rawhide lace, tested to a tensile strength of 100 lbs.
- Steer hide binding, for increased durability
- Repositioned pinkie loop allows for two fingers in the pinkie stall
- Luxurious sheep wool shearling fur wrist liner
- Built with the Professional Collection patterns



FS-M21
11.5" Neutral Infield Pattern

I-Web	RHT
-------	-----



FS-D32B
11.75" Deep Infield Pattern

Braided Single Post Web	RHT
-------------------------	-----



FS-D33
11.75" Deep Infield Pattern

H-Web	RHT
-------	-----



FS-D45
12" Deep Pitcher Pattern

2-Piece Solid Web	RHT/LHT
-------------------	---------



FS-L73
12.75" Outfield Pattern

H-Web	RHT/LHT
-------	---------



FS-J70
12.75" First Base Mitt

Dual Bar Web	RHT/LHT
--------------	---------



FS-H35
33.5" Catcher's Mitt

1-Piece Solid Web	RHT
-------------------	-----



NEW

Tournament Elite Series

- Transitional size patterns designed for the 14U player
- Game-ready oil-tanned cowhide leather shell
- Full grain leather palm lining for comfort and durability
- Professional grade rawhide lace
- Ideal Fit System
 - Pro-style open back with an easy, on-the-fly, adjustable custom fit
 - Repositioned pinkie loop allows for two fingers in the pinkie stall
- Soft micro-fiber wrist lining with foam backing
- Professional style embroidered Screamin' E and Easton logos



NEW

TEB115I
11.5" Pattern

I-Web | RHT



NEW

TEB115H
11.5" Pattern

H-Web | RHT



NEW

TEB115SP
11.5" Pattern

Braided Single Post Web | RHT



NEW

TEB3125
12.5" First Base Mitt

Braided Single Post Web | RHT/LHT



NEW

TEB2325
32.5" Catcher's Mitt

1-Piece Solid Web | RHT

NEW

Future Elite Series

- Youth patterns designed for the 11U player
 - Flex Notch™ closure system makes the glove easy to squeeze
 - Game-Ready full grain leather shell
 - Durable genuine rawhide lace
 - Super soft palm lining
- Ideal Fit System
 - Pro style open back with an easy, on-the-fly, adjustable custom fit
 - Extended finger gussets for a more secure fit and better leverage
 - Repositioned pinkie loop allows for two fingers in the pinkie stall
 - Professional style embroidered Screamin' E and Easton logos



NEW

FE11
11" Youth Pattern

I-Web	RHT/LHT
Red/White	



NEW

FE11
11" Youth Pattern

I-Web	RHT/LHT
Carmel/Black	



NEW

FE11
11" Youth Pattern

I-Web	RHT/LHT
Royal/White	



NEW

FE11
11" Youth Pattern

I-Web	RHT/LHT
Navy/White	



NEW

FE11
11" Youth Pattern

I-Web	RHT/LHT
Navy/Red	



NEW

FE11
11" Youth Pattern

I-Web	RHT/LHT
Navy/Orange	



NEW

FE11
11" Youth Pattern

I-Web	RHT/LHT
Black/White	



NEW

FE11
11" Youth Pattern

I-Web	RHT/LHT
Black/Yellow	



NEW

FE11
11" Youth Pattern

I-Web	RHT/LHT
Grey/Green	



NEW

FE11
11" Youth Pattern

I-Web	RHT/LHT
Black/Orange	



NEW

FE11
11" Youth Pattern

I-Web	RHT/LHT
Royal/Red	



NEW

FE11
11" Youth Pattern

I-Web	RHT/LHT
Grey/Brown	



NEW

FE2325
32.5" Youth Catcher's Mitt

1-Piece Solid Web	RHT/LHT
Black/Caramel	



Professional Youth Series

- Youth patterns designed for the 8U player
- Soft, genuine pigskin leather combined with an embossed Hyperlite™ synthetic
- Flex Notch™ closure system makes the glove easy to squeeze
- Super soft palm lining
- Extended finger gussets, for better fit and more leverage
- Professional-style embroidered Easton and Screamin' E logos



PY10BR
10" Youth Pattern

I-Web	RHT/LHT
Black/Red	



PY10CB
10" Youth Pattern

I-Web	RHT/LHT
Carmel/Black	



PY10BG
10" Youth Pattern

I-Web	RHT/LHT
Black/Grey/Optic	



PY10USA
10" Youth Pattern

I-Web	RHT/LHT
Navy/White/Red	

Professional Collection Fastpitch Series

- Fastpitch-specific patterns designed for smaller hands and the fastpitch softball game
- Premium Reserve™ USA steer hide leather
- Quantum Closure System™ adjustable open back for a secure fit
- Professional-grade USA-tanned rawhide lace, tested to a tensile strength of 100 lbs.
- Classic cowhide palm lining, for maximum comfort and feel
- Rolled leather welting provides a durable shape and improves break-in time
- Steer hide binding, for increased durability
- Moisture-wicking wrist lining pad keeps players cool and dry

— EASTON —
PROFESSIONAL
— COLLECTION —



PCFP115

11.5" Fastpitch Infield Pattern

I-Web RHT



PCFP1175

11.75" Fastpitch Infield Pattern

Braided Single Post Web RHT



PCFP12

12" Fastpitch Pitcher/Infield Pattern

Split-Woven Web RHT/LHT



PCFP125

12.5" Fastpitch Pitcher/Infield Pattern

Woven Web RHT/LHT



PCFP1275

12.75" Fastpitch Outfield Pattern

H-Web RHT/LHT



PCFP313

32" Fastpitch First Base Mitt

Dual-Bar Single Post Web RHT/LHT



PCFP234

34" Fastpitch Catcher's Mitt

H-Web RHT

Jen Schroeder & Morgan Stuart Elite Fastpitch Series

- Fastpitch-specific patterns, designed in collaboration with Jen Schroeder and Morgan Stuart
- Game-ready Diamond Pro Steerhide leather
- Quantum Closure System™ adjustable open back for a secure fit

- Flex Notch™ Closure System makes the glove easy to squeeze
- Supple leather lining, for added comfort and feel
- Rawhide lace adds durability to the pocket and web
- Rolled welting improves break-in time

— EASTON —
ELITE
— SERIES —



MYWHY-29

33" Fastpitch Catcher's Mitt

Two-Piece Solid Web RHT/LHT



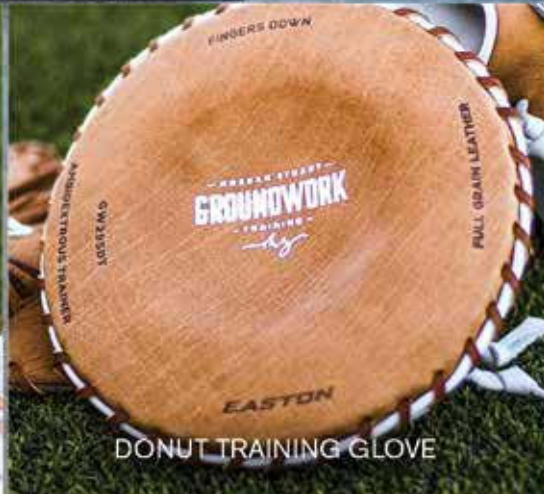
MYWHY-ME

11.5" Fastpitch Infield Pattern

Single Post Web RHT/LHT



10" TRAINING GLOVE



DONUT TRAINING GLOVE



1-HAND TRAINING GLOVE

NEW

Groundwork Training Series

- Training gloves for fastpitch softball and designed in collaboration with Morgan Stuart, the authority in softball defensive training
- The perfect training tools for fast hands and quick transfers
- Specifically designed for fastpitch softball players and a smaller, female hand
- Soft tumbled full grain leather for easy break-in
- Professional grade rawhide lace
- Quantum Closure System, adjustable open back for a secure fit

— MORGAN STUART —
GROUNDWORK
— TRAINING —
ms



NEW

GW10T 10" Training Glove

I-Web | RHT/LHT



NEW

GW295DT 29.5" Donut Training Glove

Ambidextrous
Fits both right-handed and left-handed throwers



NEW

GW1HT 1-Hand Training Glove

Mini I-Web | RHT/LHT

**NEW**

Ghost™ NX Fastpitch Series

- Fastpitch-specific patterns designed for smaller hands and the fastpitch softball game
- Game Ready Diamond Pro Steer™ USA leather
- Flex Notch™ Closure System make the glove easy to squeeze
- Quantum Closure System™ adjustable open back for a secure fit
- Ax® Suede microfiber lining for comfort and durability
- Professional-grade silver metallic rawhide lace
- Rolled leather welting provides a durable shape and improves break-in time

**NEW**

GNXFP1175

11.75" Fastpitch Infield Pattern

Braided Single Post Web	RHT
-------------------------	-----

**NEW**

GNXFP12

12" Fastpitch Pitcher / Infield Pattern

Split Woven Web	RHT/LHT
-----------------	---------

**NEW**

GNXFP125

12.5" Fastpitch Pitcher / Outfield Pattern

Woven Web	RHT/LHT
-----------	---------

**NEW**

GNXFP1275

12.75" Fastpitch Outfield Pattern

H-Web	RHT/LHT
-------	---------

**NEW**

GNXFP313

13" Fastpitch First Base Mitt

Single Post Web	RHT/LHT
-----------------	---------

**NEW**

GNXFP234

34" Fastpitch Catcher's Mitt

H-Web	RHT
-------	-----

- EASTON -

FUNDAMENTAL

- SERIES -

Fundamental Fastpitch Series

- Fastpitch-specific patterns designed for smaller hands and the fastpitch softball game
- Game-ready oil-tanned cowhide leather
- Quantum Closure System™ with an adjustable open back, for a secure fit
- Super soft palm lining, for enhanced grip and control
- Rawhide lace adds durability to the pocket and web
- Rolled welting improves break-in time



FMFP12
12" Fastpitch Pitcher / Infield Pattern
Split Woven Web | RHT/LHT



FMFP125
12.5" Fastpitch Pitcher / Outfield Pattern
Woven Web | RHT/LHT



FMFP13
13" Fastpitch Outfield Pattern
H-Web | RHT/LHT



FMFP233
33" Fastpitch Catcher's Mitt
H-Web | RHT/LHT

Ghost™ Flex Youth Series

- Youth fastpitch patterns designed for the beginning player
 - Soft genuine pigskin leather combined with embossed Hyperlite™ synthetic for lightweight feel
 - Flex Notch™ Closure System makes the glove easy to squeeze
- Super soft palm lining enhances grip for better control
 - Extended finger gussets for better fit and more leverage
 - Lock Down™ wrist strap allows for easy adjustment for the perfect fit

- EASTON -

GHOST

- FLEX -



GFY10PK
10" Youth Fastpitch Pattern
Arched H-Web | RHT/LHT
Grey/White/Pink



GFY11MG
11" Youth Fastpitch Pattern
Arched H-Web | RHT/LHT
Grey/White/Mint Green



GFY12CB
12" Youth Fastpitch Pattern
Arched H-Web | RHT/LHT
Grey/White/Carolina Blue

Professional Collection Slowpitch Series

- Softball-specific patterns designed with a wider heel and more pocket depth
- Premium Reserve™ USA steerhide leather
- Classic cowhide palm lining and finger stalls for maximum comfort and feel
- Professional-grade USA-tanned rawhide lace tested to a tensile strength of 100 lbs.
- Quantum Closure System™ with adjustable open back for a secure fit
- Rolled welting provides a durable shape and improves break-in time
- Steer hide binding for increased durability
- Repositioned pinkie loop allows for two fingers in the pinkie stall



PCSP13

13" Softball Pattern

H-Web | RHT/LHT



PCSP14

14" Softball Pattern

Dual Bar H-Web | RHT/LHT



PCSP15

15" Softball Pattern

Dual Bar H-Web | RHT/LHT

Tournament Elite Slowpitch Series

- Softball-specific patterns designed with a wider heel and more pocket depth
- Diamond Pro Steer™ USA leather
- Snakeskin embossed leather accents
- Smooth cowhide palm lining for comfort and durability
- Professional grade rawhide lace
- Quantum Closure System™ with adjustable open back for a secure fit
- Rolled welting improves break-in time
- Repositioned pinkie loop allows for two fingers in the pinkie stall



TESP13

13" Softball Pattern

H-Web | RHT/LHT



TESP14

14" Softball Pattern

Dual Bar H-Web | RHT/LHT



TESP15

15" Softball Pattern

Dual Bar H-Web | RHT/LHT

Prime™ Slowpitch Series

- Softball-specific patterns designed with a wider heel and more pocket depth
- Game-ready oil-tanned leather palm and web
- Super soft palm lining for enhanced grip and control
- Rawhide lace adds durability to the fingers and web
- Rolled welting improves break-in time
- Repositioned pinkie loop allows for two fingers in the pinkie stall



PSP125

12.5" Softball Pattern

Single Post Web | RHT/LHT



PSP13

13" Softball Pattern

H-Web | RHT/LHT



PSP14

14" Softball Pattern

Dual Bar H-Web | RHT/LHT

BATTING GLOVES



Alex Bregman
Houston Infielder

Professional Collection

Adult M-XXL

- Premium-grade, digitally embossed Cabretta sheepskin-leather palm
- Smooth microfiber combined with Diamond spandex back-of-hand for the right balance of flex and support
- Comfortable neoprene cuff with a satin-woven label for player personalization
- Direct-molded Easton and chrome script Professional Collection logos



Black / Black
Adult



White / White
Adult



Caramel / White
Adult



Gametime VRS™

Grey / Black | **Adult S-XL** | **Youth S-L**

- VRS™ palm padding reduces vibration and blisters
- Durable, smooth, goatskin palm with synthetic thumb
- Sublimated flexible four-way-stretch mesh
- Comfortable neoprene cuff with branded pull tab



Walk-Off NX™

Adult S-XL	XXL available in White / White ONLY
Youth S-L	Youth XL available in White / White ONLY

- Durable, one-piece, smooth goatskin-leather palm
- Breathable Diamond mesh combined with a durable, smooth microfiber back-of-hand for the perfect balance of flex and support
- Retro elastic cuff with Bio-Dri™ wrist liner
- Molded Easton Screamin' E logo



Black / Black
Adult
Youth



White / White
Adult
Youth



Red / Red
Adult
Youth



Navy / Navy
Adult
Youth



Royal / Royal
Adult
Youth



Stars & Stripes
Adult
Youth



Tie Dye
Adult
Youth



Caramel / Carolina Blue
Adult
Youth



Caramel / Grey
Adult



Black / Optic Yellow
Adult

Gametime

Adult S-XL	
Youth S-L	Tee Ball available in Black / Black _ Synthetic Palm

- Durable, smooth, goatskin palm with synthetic thumb
- Sublimated flexible four-way-stretch mesh
- Comfortable neoprene cuff with branded pull tab



Black / Black
Adult
Youth / Tee Ball



White/ White
Adult
Youth



White / Red
Adult
Youth



White / Navy
Adult
Youth



White / Royal
Adult
Youth



White / Navy / Red
Adult
Youth

BATTING GLOVES



Haylie McCleney
Team USA & Athletes Unlimited
Outfielder

NEW

Ghost™ NX Fastpitch

Women's S-XL

- Upgraded and durable one-piece smooth goatskin leather palm
- Lycra® back-of-hand, fused with Structured-Flex Silicone for ideal fit
- Flexible, molded wrist strap with bar-tack reinforced stitching
- Elastic cuff with Bio-Dri™ wrist liner wicks away moisture
- Micro-print Ghost NX tech label and molded Easton Screamin' E logo
- Female-specific sizing



White / Silver
Women's



White / Red
Women's



White / Royal
Women's



White / Navy
Women's



Stars & Stripes
Women's



Tie Dye
Women's



White / Carolina Blue
Women's



White / Mint Green
Women's



White / Navy Turquoise
Women's

Fundamental VRS™ Fastpitch

Grey / White Women's S-XL Youth (Girl's) S-L

- VRS™ palm padding reduces vibration and blisters
- Lightweight and super-flexible, two-piece, synthetic palm
- Embossed Lycra® back-of-hand
- Comfortable neoprene cuff offers durable and breathable support
- Female-specific sizing



Fundamental Fastpitch

Women's S-XL Youth (Girl's) S-L

- Lightweight and super-flexible, two-piece, synthetic palm
- Embossed Lycra® back-of-hand
- Comfortable, neoprene cuff offers durable and breathable support
- Female-specific sizing



White / White
Women's
Youth (Girl's)



White / Carolina Blue
Women's
Youth (Girl's)



White / Pink
Youth (Girl's)

BAGS



WALK-OFF® NX

GHOST NX™

CATCHER'S WHEELED BAG

FLAGSHIP



LARGE MAIN COMPARTMENT



GLOVE COMPARTMENT



FOUR FULL-LENGTH
BAT SLEEVES



PATENT-PENDING GEAR KLIP™

NEW

Flagship Backpack

Dimensions 22" H x 13 1/2" W x 10" D

Color Black

- Glove compartment with molded top panel keeps gloves in game-ready condition
- Large main compartment with collapsible interior shelf provides storage options
- Patent-pending Gear Klip™ on external sides hold cleats, ball gloves, batting gloves or other gear
- Four full-length bat sleeves protect bats in transit to and from the field
- External USB port offers a convenient charging option for your electronics at the field, battery not included
- Expandable mesh pockets accommodate oversized water bottles and more
- One external and one internal personal pocket keeps valuables secure
- Long-lasting YKK® zipper used on main compartment
- Fence hook tucks away when not in use
- Padded back and shoulder straps for comfort



WALK-OFF® NX



EXTRA-WIDE MOUTH OPENING



FRONT PERSONAL POCKET



FENCE HOOK



PATENT-PENDING GEAR KLIP™

UPDATED

Walk-Off® NX Backpack

Dimensions 21" H x 13" W x 10½" D

- Extra-wide mouth opening provides easy access to main compartment
- Unique hex-grid tarpaulin helmet holder allows for external storage, more space for equipment inside the bag and additional dry time for the helmet
- Patent-pending Gear Klip™ on external sides hold cleats, ball gloves, batting gloves or other gear
- Two full-length bat sleeves protect bats in travel to and from the field
- Expandable mesh pockets accommodate oversized water bottles and more
- Front personal pocket keeps valuables within reach, but out of sight
- Long-lasting YKK® zipper used on main compartment
- Fence hook tucks away when not in use
- Padded back and shoulder straps for comfort
- Main opening flap designed for team embroidery
- Removable top panel for team logo embroidery



Black



Charcoal



White



Red



Orange



Green



Navy



Royal



Carolina Blue



Purple



Maroon



Stars & Stripes

EXTRA-WIDE MOUTH OPENING

FRONT PERSONAL POCKET

METALLIC PRINTED HELMET HOLDER

PATENT-PENDING GEAR KLIP™

UPDATED**Ghost™ NX Fastpitch Backpack****Dimensions** | 20" H x 12½" W x 10" D

- Extra-wide mouth opening of main compartment provides easy access to your gear
- Metallic printed helmet holder allows for external storage, more space for equipment inside the bag and dry time for the helmet
- Patent-pending Gear Klip™ on external sides hold cleats, ball gloves, batting gloves or other gear
- Two full-length bat sleeves protect bats in travel to and from the field
- Expandable mesh pockets accommodate oversized water bottles and more
- Front personal pocket keeps valuables within reach, but out of sight
- Increased zipper size on main compartment, ensuring strength and durability
- Fence hook tucks away when not in use
- Female-specific padded back and shoulder straps for comfort
- Main opening flap designed for team embroidery
- Removable top panel for team logo embroidery



Black



Charcoal



White



Red



Navy



Royal



Carolina Blue



Purple



Stars & Stripes



Reflex Backpack

Dimensions | 20½" H x 13" W x 12" D

- Spacious main compartment holds helmet, ball glove, cleats and more
- Top-loading main compartment allows for easy gear access
- Two full-length bat sleeves protect bats in travel to and from the field
- Expandable mesh pockets accommodate oversized water bottles and more
- Front personal pocket is fully removable for team embroidery
- Side webbing straps act as loops for hanging batting gloves
- Additional personal pocket keeps valuables within reach, but out of sight
- Fence hook tucks away when not in use
- Padded back and shoulder straps for comfort



Black White Red



Royal Navy Stars & Stripes



Game Ready™ Backpack

Dimensions | 20½" H x 13½" W x 8½" D

- Vented main compartment
- Two mesh pockets for bats or water bottles
- Front pocket for personal items
- Vented shoe compartment
- Padded back and shoulder straps for comfort
- Fence hook and custom rubber zipper pulls



Black White Red Orange Green



Navy Royal Purple Maroon Stars & Stripes



Game Ready™ Youth Backpack

Dimensions | 16" H x 12" W x 8" D

- Storage in main compartment to fit helmet and glove
- Padded back and shoulder straps for comfort
- Two mesh pockets for bats or water bottles
- Front pocket for personal items
- Fence hook and custom rubber zipper pulls



Black



Pink



Red



Navy



Royal



Army Camo



Red, White & Blue



E50BP™

Dimensions | 18" H x 12" W x 7" D

- Fence hook for dugout functionality
- Front pocket for personal items
- Padded shoulder straps
- Side pockets for bats or water bottles



Black



Red



Royal



Jen Schro Catcher's Backpack

Dimensions	24" H x 14" W x 10" D
Color	White

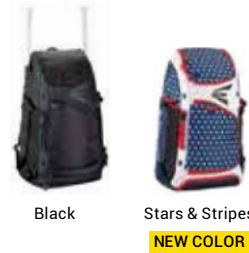
- Designed in conjunction with Jen Schro, the premier fastpitch catching coach
- White colorway, as designed by Jen, includes lining with her inspirational quotes
- Vented main compartment to fit catcher's gear
- Interior shelf in main compartment to organize equipment
- Vented shoe compartment
- Two fully lined bat sleeves
- External strap with quick-release buckle for gloves or helmet
- Side mesh sleeves for leg guards which fold and close flat when not in use
- External strap and buckle for attaching helmet or ball glove
- Fence hook and custom rubber zipper pulls



E610CBP™ Catcher's Backpack

Dimensions	25" H x 15" W x 10" D
Color	Black

- Vented main compartment to fit catcher's gear
- Interior shelf in main compartment to organize equipment
- Separate vented shoe compartment
- Two fully-lined bat sleeves
- Side mesh sleeves for leg guards which fold and close flat when not in use
- External strap and buckle for attaching helmet or ball glove
- Fence hook and custom rubber zipper pulls





Catcher's Wheeled Bag

Dimensions | 28 $\frac{1}{2}$ " L x 16" W x 12" H

- Rigid bottom and back panels with telescopic handle
- Two expandable side sleeves for leg guards
- Three mesh-vented compartments for breathability
- Felt-lined personal pocket for personal items
- Two internal detachable shelves for organization
- Two fully lined bat sleeves with integrated fence hooks
- Rugged inline wheels
- External strap with quick-release buckle for gloves or helmet
- Internal mesh pocket with hook and loop for batting gloves
- Small removable bag for personal items
- Jen Schro edition designed in conjunction with the premier fastpitch catching coach



White
Jen Schro



Black



Charcoal



Stars & Stripes

NEW COLOR

WHEELHOUSE PRO



NEW

Wheelhouse Pro

Dimensions 38" L x 16" W x 14" D

Color Black

- Top of the line wheeled equipment bag that meets the demands of tournament travel
- Premium telescopic handle for solid transporation
- Large mouth opening provides easy access to main compartment
- Center padded compartment fits up to six bats
- Top vented compartment is ideal for a helmet, ball glove or cleats
- Front and side gusseted compartments provide a multitude of storage options
- Two felt-lined side pockets with fence hooks for dugout functionality
- Two-piece molded base and back panel allows the bag to stand upright and protects the bottom of the bag
- Long lasting YKK® zippers on main compartment
- Rugged inline wheels



Dugout Wheeled Bag

Dimensions 38" L x 14" W x 13" D

- Durable equipment wheeled bag with a spacious interior
- Large mouth opening provides easy access to main compartment
- Center-padded compartment fits up to five bats
- Top compartment makes for convenient helmet or ball glove storage
- Panel from top compartment detaches easily for embroidery
- One Internally gusseted side pocket
- One large personal front pocket for organization
- One-piece molded base allows bag to stand upright and protects the bottom of the bag
- Long-lasting YKK® zippers on main compartment
- Rugged inline wheels



Black



Red



Navy



Royal



Octane Wheeled Bag

Dimensions 36" L x 13" W x 12" H

- Large mouth opening provides easy access to main compartment
- Center padded compartment fits up to five bats and contains one single fence hook
- Top compartment makes for convenient helmet or ball glove storage
- Top compartment panel detaches easily for embroidery
- One personal side pocket provides storage and separation
- Rigid base protects the bottom of the bag
- Rugged inline wheels
- Removable team logo panel for personal customization
- Reinforced carry straps



Black



Red



Navy



Royal

Traveler Stand-Up Wheeled Bag

Dimensions 24" H x 13" W x 10" D

- Vented main compartment
- Separate vented shoe compartment with fully removable panel for team embroidery
- Telescoping handle
- Four bat sleeves
- Two side personal pockets
- Fence hook and custom rubber zipper pulls



Black



Charcoal/White



Red



Orange



Navy



Royal

Charcoal/
Carolina Blue

Charcoal/Purple

Team Equipment Wheeled Bag

Dimensions 37 1/2" L x 16" W x 14 1/2" H

Color Black

- Large mouth opening provides easy access to main compartment
- Rigid base protects the bottom of the bag
- Rugged inline wheels
- Reinforced carry straps



BAGS

Easton Premium Duffle

Dimensions	30" L x 14" W x 14" D
Color	Black

- Durable duffle construction holds all equipment and personal items
- Main compartment with an additional end pocket for storage
- Clear I.D. holder on side for easy identification
- One zippered pocket inside for personal items
- Five strategically placed feet for added durability



E310D™ Player Duffle

Dimensions	24" L x 14" W x 13" H
------------	-----------------------

- Duffle used by Easton sponsored college teams
- Two zippered side sleeves for bats
- Adjustable and padded shoulder strap along with shorter handle carry straps
- Main compartment plus additional side pockets for gear and personal items
- Separate side pocket for cleats or shoes
- Vented pockets minimize odor and allow equipment to dry faster
- Removable panel for custom team embroidery



E100T™

Dimensions	35" L x 7" W x 8½" H
------------	----------------------

- Tote bag designed for the youth player
- One main compartment for equipment
- Separate bat pocket holds two bats
- Fence hook to hang from dugout
- Shoulder strap and two handle straps
- Available in eight team colors



E100G™

Dimensions	38" L x 14" W x 14" H
Color	Black

- Large equipment bag for coaches and teams
- Covered in a texture-embossed material to withstand wear and tear
- Carry straps have reinforced stitching that goes under and around the bag to stabilize load disbursement
- #10 lockable zippers for maximum durability to prevent blowouts
- Large opening with enough volume to fit two full sets of catcher's gear



Cube Ball Bag

Dimensions	10 $\frac{1}{2}$ " L x 10 $\frac{1}{2}$ " W x 10 $\frac{1}{2}$ " H
Color	Black

- Holds 67 baseballs or 26 softballs
- Large zipper opening for easy access
- Main opening flap designed for team embroidery
- Four strategically placed feet for added durability



Coach's Bucket Cover

Dimensions	12" W x 25" H
Color	Black

- Made to fit over a six-gallon bucket
- Organization panel for scorecard, pens, balls and water
- Cushioned seat top
- Holds six dozen baseballs and three dozen softballs
- Carry strap



Team Hanging Helmet Bag

Dimensions	35" W x 26" H
Color	Black

- Three "J"-style fence hooks
- Reinforced nylon slots hold up to 12 helmets



Team Hanging Bat Bag

Dimensions	35" W x 31" H
Color	Black

- Three "J" style fence hooks
- Reinforced nylon slots hold up to 10 bats



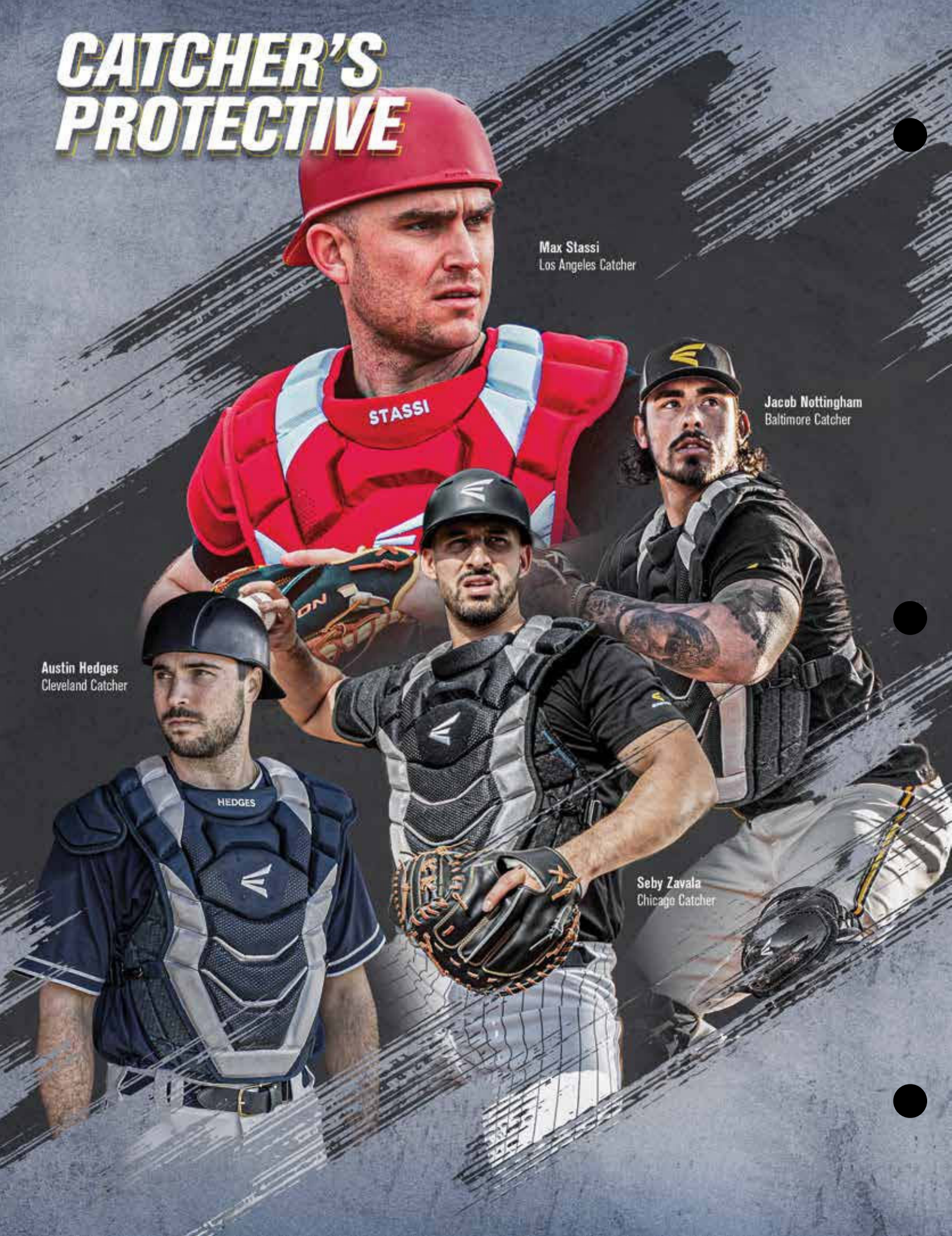
CATCHER'S PROTECTIVE

Max Stassi
Los Angeles Catcher

Jacob Nottingham
Baltimore Catcher

Austin Hedges
Cleveland Catcher

Seby Zavala
Chicago Catcher



Elite X™ Catcher's Helmet

Large 7 $\frac{1}{8}$ - 7 $\frac{1}{2}$ Hat Size

Small 6 $\frac{1}{2}$ - 7 $\frac{1}{8}$ Hat Size

- Black steel cage designed with a flat middle bar for increased visibility
- ABS Thermoplastic Shell with strategic airflow vents
- Plush, wrapped padding with breathable air mesh and BioDry™ moisture-wicking fabric on forehead
- Ergonomic chin cup design allows for better fit and communication
- Extra-wide rear top strap for secure locked-in adjustment
- Removable and washable forehead and chin pads
- Matte solid shell exterior
- Extra-wide rear top strap for secure locked-in adjustment
- Meets NOCSAE standard for all levels of play

SE Certified

Product Meets
NOCSAE®
Applicable Standard



Black

Red

Navy

Royal

Elite X™ Chest Protector

Adult Ages 15 & Up _ 17"

Intermediate Ages 13-15 _ 16"

Youth Ages 9-12 _ 15"

- Stacked memory foam in ab area provides improved rebound control
- Adjustable shoulder cap
- Four-point webbing strap system with neoprene back organizer for a tight fit
- Heavy-duty black coated steel inset waist clip for a better wrapped fit
- Meets NOCSAE Commotio Cordis standard

SE Certified

Product Meets
NOCSAE®
Applicable Standard



Easton Engineered
Commotio Cordis
Protection



Black /Silver



Red /Silver



Navy /Silver



Royal /Silver

Elite X™ Leg Guards

Adult Ages 15 & Up _ 16 $\frac{1}{2}$ "

Intermediate Ages 13-15 _ 15 $\frac{1}{2}$ "

Youth Ages 9-12 _ 14"

- Reinforced knee and thigh connection improves fit and security when moving in and out of the squat
- Wide-set knee design provides a larger surface area in the blocking position, allowing for more explosive side-to-side movements
- Removable inner knee and shin pads for adjusted fit and comfort
- Vented shell design for increased airflow and breathability
- Triple-knee design for ADULT and INTERMEDIATE Sizes
- Double-knee design for YOUTH Size
- Toe extension on ADULT model ONLY



Black /Silver

Red /Silver

Navy /Silver

Royal /Silver

ELITE X ELITE X

MAX STASSI
LOS ANGELES CATCHER



WIDE-SET KNEE DESIGN



NOCSAE
COMMOTIO CORDIS STANDARD



BLACK STEEL CAGE DESIGN

STACKED MEMORY FOAM

Elite X[™] Box Set

- Includes Elite X[™] Helmet, Chest Protector and Leg Guards
- Retail box _ Black/Silver, Red/Silver, Navy/Silver, Royal/Silver, Stars & Stripes
- Brown box _ All other colors

Adult (Ages 15 & Up)

Helmet	Large 7 $\frac{1}{8}$ " - 7 $\frac{1}{2}$ " Hat Size
Chest Protector	17"
Leg Guard	16 $\frac{1}{2}$ "

Intermediate (Ages 13-15)

Helmet	Large 7 $\frac{1}{8}$ " - 7 $\frac{1}{2}$ " Hat Size
Chest Protector	16"
Leg Guard	15 $\frac{1}{2}$ "

Youth (Ages 9-12)

Helmet	Small 6 $\frac{1}{2}$ " - 7 $\frac{1}{8}$ " Hat Size
Chest Protector	15"
Leg Guard	14"



Black /Silver



Red /Silver



Navy /Silver



Royal /Silver



Maroon /Silver



Cardinal /Silver



Green /Silver



Purple /Silver



Maroon /Gold



Black /Gold



Red /Navy



Navy /Red



Black /Orange



Navy /Carolina Blue



Stars & Stripes

Stars & Stripes

Adult
Intermediate

Gametime™ Catcher's Helmet

Large	7 1/8 - 7 1/5 Hat Size
Small	6 1/5 - 7 1/8 Hat Size

- High-tensile steel cage design for maximum visibility
- ABS Thermoplastic Shell with strategic airflow vents
- Comfort-stacked foam with BioDry™ moisture-wicking fabric liner
- Ergonomic chin cup design allows for better fit and communication
- Extra-wide top strap for secure locked-in adjustment
- Gloss solid shell exterior
- Meets NOCSAE standard for all levels of play



Black



Red



Navy



Royal

Gametime™ Chest Protector

Adult	Ages 15 & Up _ 17"
Intermediate	Ages 13-15 _ 16"
Youth	Ages 9-12 _ 15"

- Impact-absorbing foam ab padding for better rebound control
- Adjustable shoulder cap
- Four-point webbing strap system
- Steel-inset waist clips on one side for a better wrapped fit
- Meets NOCSAE Commotio Cordis standard



Black



Red



Navy



Royal

Gametime™ Leg Guards

Adult	Ages 15 & Up _ 16 1/2"
Intermediate	Ages 13-15 _ 15 1/2"
Youth	Ages 9-12 _ 14"

- Reinforced triple-knee system for better fit and durability
- Wide knee for better stability
- Stitched knee padding for added comfort
- Vented-shell design for increased airflow and breathability
- EVAIR-breathable foam liner
- Triple-knee design for ADULT and INTERMEDIATE Sizes
- Double-knee design for YOUTH Size
- Toe extension on ADULT model ONLY



Black



Red



Navy



Royal

Gametime™ Box Set

- Includes Gametime™ Helmet, Chest Protector and Leg Guards
- Packaged in retail box

Adult (Ages 15 & Up)

Helmet	Large $7\frac{1}{8}$ - $7\frac{1}{2}$ Hat Size
Chest Protector	17"
Leg Guard	16 $\frac{1}{2}$ "

Intermediate (Ages 13-15)

Helmet	Large $7\frac{1}{8}$ - $7\frac{1}{2}$ Hat Size
Chest Protector	16"
Leg Guard	15 $\frac{1}{2}$ "

Youth (Ages 9-12)

Helmet	Small $6\frac{1}{2}$ - $7\frac{1}{8}$ Hat Size
Chest Protector	15"
Leg Guard	14"



Black



Red



Navy



Royal

Black Magic 2.0 Box Set

- Includes Black Magic 2.0 Helmet, Chest Protector and Leg Guards
- Hockey-style ABS Thermoplastic Shell Helmet and steel cage with dual-density foam
- Catcher's Helmet meets corresponding NOCSAE standard for all levels of play
- Chest Protector with foam padding for protection
- Leg Guards with double-knee protection
- Available in BLACK ONLY
- Packaged in retail box



Youth (Ages 9-12)

Helmet	Small $6\frac{1}{2}$ - 7 Hat Size
Chest Protector	14"
Leg Guard	12 $\frac{1}{2}$ "

Junior Youth (Ages 6-8)

Helmet	Small $6\frac{1}{2}$ - 7 Hat Size
Chest Protector	12"
Leg Guard	11 $\frac{1}{2}$ "



To my fellow catchers, **YOU ARE AMAZING!**

No doubt, our job is the toughest on the field, but that is **EXACTLY** why we love it.

It is my mission to inspire you and protect you
- Easton X Jen Schro does just that.

This gear is revolutionary.

It's made specifically for **OUR** bodies;
it's filled with inspiration.

Girls, this is not just my gear, this won't
just be your gear; **THIS IS OUR GEAR.**

XO,
Jen Schro *Jen Schroeder*

**FOUNDER OF
JEN SCHRO CATCHING™**



EASTON

**JEN SCHRO
CATCHING**



Jen Schro The Very Best™ Box Set

Large

Helmet	Large 7 $\frac{1}{8}$ - 7 $\frac{7}{8}$ Hat Size
Chest Protector	Large 17"
Leg Guard	Large 15"

Medium

Helmet	Small 6 $\frac{1}{2}$ - 7 $\frac{1}{8}$ Hat Size
Chest Protector	Medium 16"
Leg Guard	Medium 14"

Small

Helmet	Small 6 $\frac{1}{2}$ - 7 $\frac{1}{8}$ Hat Size
Chest Protector	Small 14"
Leg Guard	Small 12"



Black



White



Charcoal

NEW COLOR



Stars & Stripes



Navy

NEW COLOR



Red

NEW COLOR



Royal

NEW COLOR

EASTON

Jen Schro The Very Best™ Catcher's Helmet

Large	7 1⁄8 - 7 1⁄5 Hat Size
Small	6 1⁄5 - 7 1⁄8 Hat Size

- Streamlined, durable ABS Thermoplastic Shell with black matte steel cage
- Dual-density foam padding for comfort and protection
- CLEAR DRI™ and AEGIS™ Anti-Microbial treated forehead and chin pads to fight off bacteria and sweat
- Matte two-tone finish
- Meets NOCSAE standards for all levels of play



Jen Schro® Motivation



Black



White

Jen Schro The Very Best™ Chest Protector

Large	17"
Medium	16"
Small	14"

- Improved chest silhouette to provide the best fit, mobility and protection for the female athlete
- Two-piece design with narrowed shoulders and slimming ab area with more memory foam for better protection and blocking
- Compression-molded neoprene second layer, shaped to wrap the waist and sit underneath the chest for better comfort
- Mesh over the shoulders for breathability, comfort and weight management
- Improved neck and collarbone guard
- Patent-pending silicone grip abs for reduced spin on blocked balls
- Three-way easy tightening system with dual plastic buckles



Jen Schro® Compression



Black



White

Jen Schro The Very Best™ Leg Guards

Large	15"
Medium	14"
Small	12"

- Improved shell design for a better wrap around shins and knee, shaped for improved performance when blocking and throwing from knees
- Breathable liner for maximum cooling
- IKP+ (Inner Knee Padding Plus) to reduce pain and bruising on the inner knee from blocking and throwing from knees
- Neoprene back of knee straps to reduce discomfort from bruising or rashes
- Added shin padding for extra comfort



IKP+ Inner Knee Padding Plus



Black



White

The Fundamental™ by Jen Schro Catching Helmet

- Available as part of box set only
- Streamlined durable ABS Thermoplastic Shell with steel cage
- Dual-density foam padding for comfort and protection
- Gloss solid finish
- Meets NOCSAE standards for all levels of play



The Fundamental™ by Jen Schro Chest Protector

- Available as part of box set only
- Best-in-class chest silhouette to provide the best fit, mobility and protection
- Mesh over the shoulders for breathability and weight management
- Improved neck and collarbone guard
- Two-way easy tightening system with one-side metal clip



The Fundamental™ by Jen Schro Leg Guards

- Available as part of box set only
- Improved shell design for a better wrap around shins and knee shape for improved performance when blocking and throwing from knees
- Breathable liner for maximum cooling
- Removable knee padding with inner knee protection



The Fundamental™ by Jen Schro Box Set

- Includes Catcher's Helmet, Chest Protector and Leg Guards
- Packaged in retail box

Large

Helmet	Large 7 1⁄8 - 7 1⁄5 Hat Size
Chest Protector	Large 17"
Leg Guard	Large 15"



Medium

Helmet	Small 6 1⁄5 - 7 1⁄8 Hat Size
Chest Protector	Medium 16"
Leg Guard	Medium 14"



Small

Helmet	Small 6 1⁄5 - 7 1⁄8 Hat Size
Chest Protector	Small 14"
Leg Guard	Small 12"



Pro X™ Skull Cap

L/XL	7 1/4" - 7 5/8"
S/M	6 5/8" - 6 1/4"

- ABS Thermoplastic Shell with matte finish
- Classic-style skull cap which can be worn frontward or backward
- Soft dual-density foam for unparalleled comfort
- BioDry™ fabric liner absorbs moisture for added dryness and comfort
- Easton Screamin' E forehead sticker is removable for team customization



Black

Charcoal

Red

Navy

Royal



Speed Elite Mask

One size fits all

- Traditional catcher's mask with lightweight, high-strength cage
- Provides maximum field vision



Black

Red

Navy

Royal



Catcher's Throat Guard

One size fits all

- 4.5" tall throat guard comes with durable and adjustable nylon ties



Black

White

Red

Navy

Royal

NEW COLOR



Knee Saver™

Large 5' 8" & Up

Small 5' 7" & Under

- Knee Saver™
- Four-sided cushion cradle design provides maximum support, comfort and protection
- Reduces stress and erosion of cartilage of the knee joint
- Available in BLACK ONLY

Universal Padding Fit Kit

One size fits all

- Multi-purpose helmet fit-enhancement pads
- Fits all Easton batting and catcher's helmets



HELLCAT™

SOFTBALL FIELDER'S HELMET

SEI Certified

Product Meets
NOCSAE®
Applicable Standard



CELLULAR FOAM LINER

FULL COVERAGE HELMET

HYPERLITE™ FACEMASK

FOUR-POINT CHINSTRAP

QUICKLIK FIT SYSTEM

NEW

HELLCAT Softball Helmet

Large / XLarge	7 ³ / ₈ - 8 Hat Size
Small / Medium	6 ⁷ / ₈ - 7 ¹ / ₅ Hat Size

- Easton's revolutionary softball helmet designed specifically to protect pitchers and infielders
- 360° protection meets NOCSAE standard for fielder's headgear
- Ultra-lightweight design: under 2.5lbs for L/XL size, under 2lbs for S/M size
- Hyperlite™ Facemask with a large, uninterrupted view port
- Quicklik Fit System customizes fit to your head
- Four-point adjustable chin cup for maximum stability
- Available in two sizes, ranging from size 6-7/8" to size 8" hat size
- Not approved for use in the catcher position



Black



White



SEI Certified

Product Meets
NOCSAE®
Applicable Standard

HYPERLITE

EASTON

NEW

Hellcat Leg Guard

	Knee to Ankle	Knee to Extension
Large / XLarge	17 $\frac{1}{2}$ "	19"
Small / Medium	14"	16 $\frac{1}{2}$ "

- Made specifically for softball, with excellent protection and mobility
- TruHinge™ thigh guard made from 3DShox™ material articulates with the knee and follows your every move
- Adjustable and removable internal shin pad provides extra protection and placement options
- Shin extension offers an optional length adjustment for a customized fit
- Three hook and loop straps and one buckle strap provide a secure fit throughout all fielding movements
- Left-leg and right-leg specific molds create a great anatomical fit



Black



TRU-HINGE 3DSHOX

NEW

Hellcat Helmet Decal Kit

Large / XLarge

Small / Medium

- Custom decal kit for Hellcat Softball Fielder's Helmet
- Wide variety of color options for a unique look on any base colored helmet
- Installation diagram and instructions included

**NEW**

Hellcat Helmet Chin Strap

One size fits all

- Replacement chinstrap for the Hellcat Helmet
- Four-point adjustable chin cup for maximum stability



BATTING HELMETS

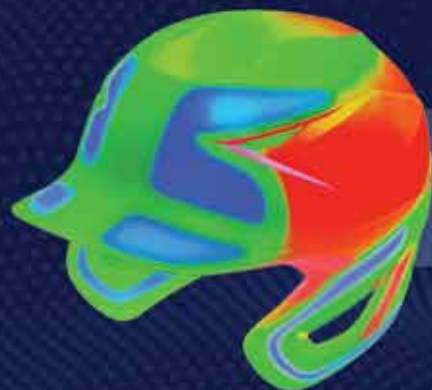


PRO MAX



TRIDENT
PROTECTION SYSTEM

OPTIMIZED PLAYER PROTECTION



1 SHELL GEOMETRY INFORMED BY VIRTUAL TESTING,
OPTIMAL THICKNESS FOR OPTIMAL PROTECTION

THIN THICK

2 MULTI-DENSITY PROTECTION - USE OF VISCOELASTIC FOAM
(SIMILAR TO THAT FOUND IN FOOTBALL HELMETS) AND DIFFERENT
FOAM DENSITIES TO PROTECT AGAINST DIFFERENT SPEEDS OF IMPACT



3 GAME READY FIT - DIAGONAL "HALO" FIT ACCOMMODATES
THE WIDEST RANGE OF HEAD SIZES, WHILE SITTING
SECURELY ON EVERY ATHLETES' HEAD

NEW

Pro Max Batting Helmet

Large/Extra Large	7 1/8 - 7 3/4
Medium/Large	6 5/8 - 7 1/4

- Trident Protection System _ Easton's three-pronged approach to optimal head protection
 - Helmet Shell Thickness _ Computer Simulated Impact informs varying thicknesses in the shell to optimize protection for the player
 - Game Ready Fit _ Cradles the player's head for a great fit, increasing comfort and safety as well as accommodating a wide range of head sizes
 - Multi-Density Protection _ Utilizes multiple foam densities to manage different speeds of impact, including viscoelastic foams like the foam found in football helmets
- Compatible with Easton's universal system of accessories, including all Jaw Guards, Universal Baseball/Softball Mask and fit kit
- Universal Jaw Guard mounted to the Pro Max Helmet offers extra protection on the side of the helmet facing the pitcher, with right-handed or left-handed batter-universal configuration
- Matte finish with tonal metallic accents
- Meets NOCSAE standard for all levels of play



Pro Max with Universal Jaw Guard

Jaw Guard Pre-Assembled on Left Ear, Movable to Right Ear

Large/Extra Large	7 1/8 - 7 3/4
Medium/Large	6 5/8 - 7 1/4



Black



White



Red



Navy



Royal

Pro Max Matte

Matte-Finish Painted Helmet with Tonal Metallic Accents

Large/Extra Large	7 1/8 - 7 3/4
Medium/Large	6 5/8 - 7 1/4



Black



White



Red



Navy



Royal

BATTING HELMETS

Z5 2.0™ Matte Two-Tone

Two-Tone Matte Finish Painted Batting Helmet

Extra Large	7 1⁄5 - 8 Hat Size
Senior	7 1⁄8 - 7 1⁄5 Hat Size
Junior	6 1⁄5 - 7 1⁄8 Hat Size



- High impact resistant ABS shell for maximum protection
- Dual-density foam liner for shock absorption and comfort
- Padded BioDri™ inner liner for moisture management
- Wrapped ear pads for durability and comfort
- Easton Screamin' E forehead sticker is removable for team customization
- Universal Jaw Guard mounted to the Z5 2.0™ Matte Solid Helmet offers extra protection on the side of the helmet facing the pitcher, with right-handed or left-handed batter-universal configuration
- Meets NOCSAE standard for all levels of play



Black/White



Charcoal/Black



White/Black



Red/White



Green/White



Navy/White



Royal/White



Maroon/White



Black/Red



Black/Orange



Black/Gold



Red/Navy



Navy/Red



Navy/Orange



Royal/Red



Royal/Orange
NEW COLOR



Green/Gold
NEW COLOR

Z5™ Matte Solid with Universal Jaw Guard

Jaw Guard Pre-Assembled on Left Ear, Movable to Right Ear

Senior	Junior
--------	--------



Black



Charcoal



White



Stars & Stripes



Red



Navy



Royal



Z5 2.0™ Matte Solid

Matte Finish Painted Batting Helmet

Extra Large Senior Junior



Black



Charcoal



Light Grey



White



Red



Orange



Texas Orange



Gold



Vegas Gold



Green



Navy



Royal



Carolina Blue



Purple



Maroon



Cardinal
NEW COLOR



Military Green
NEW COLOR

Universal Jaw Guard

- Provides extra protection on the side of the helmet facing the pitcher
- Singular Jaw Guard can be assembled on the right side or left side of compatible helmets
- Impact-resistant ABS Thermoplastic Shell with soft internal padding
- Fits Pro Max, Pro X™, Z5™, Z5 2.0™ and Alpha helmets in all sizes, eliminating the need to drill any holes
- Includes color-matching hardware and an extra snap screw for attaching chinstrap on top of Universal Jaw Guard



Black



Charcoal



Light Grey



White



Red



Orange



Texas Orange



Gold



Vegas Gold



Green



Cardinal
NEW COLOR



Stars & Stripes



Navy



Royal



Carolina Blue



Purple



Maroon



Military Green
NEW COLOR



Camo

BATTING HELMETS

Alpha Batting Helmet

Large/Extra Large	7 1/8 - 7 3/4 Hat Size
Medium/Large	6 5/8 - 7 1/4 Hat Size
T-Ball/Small	6 1/4 - 6 5/8 Hat Size

- Three distinct shell sizes fit the entire range of players, from Tee ball to Adults
- ABS Thermoplastic Shell engineered for maximum protection
- BioDry™ fabric liner absorbs moisture for added dryness and comfort
- Dual-density foam liner for shock absorption and comfort
- Versions preassembled with facemasks include chinstrap and snap screws
- Easton Screamin' E forehead sticker is removable for team customization
- Helmet-mounted snap screws available in T-Ball/Small ONLY
- Meets NOCSAE standard for all levels of play



Alpha Solid

Solid Color Batting Helmet

L/XL	M/L	TB/S
------	-----	------



Black



Charcoal



White



Red



Navy



Royal



Pink
(TB/S ONLY)

Alpha with Baseball/Softball Mask

Solid Color Batting Helmet with Baseball/Softball Mask

L/XL	M/L	TB/S
------	-----	------



Black



Charcoal



White



Red



Navy



Royal



Pink
(TB/S ONLY)





Universal Baseball/Softball Mask 2.0

One size

- Fits Pro Max, Pro X_{III}, Z5 2.0_{III} and Alpha helmets across multiple sizes
- High-tensile steel wire ensures maximum protection
- Four-point connection system
- NOCSAE approved for balls no smaller than 9" in circumference
- Not certified for use with Z5_{III} helmet in size EXTRA LARGE



Universal Softball Mask 2.0

One size

- Fits Z5 2.0 and Alpha helmets across multiple sizes
- High-tensile steel wire ensures maximum protection
- Four-point connection system
- NOCSAE approved for balls no smaller than 11" in circumference
- Not certified for use with Z5_{III} helmet in size EXTRA LARGE



Conture Helmet Chin Strap

One size

- Contoured chinstrap wraps around chin for a more secure and comfortable fit
- Includes snap screws for attaching onto Easton Helmets, Easton Facemasks or any Easton Jaw Guard



Ghost Helmet Chin Strap

One size

- Chinstrap made specifically for the Ghost fastpitch batting helmet
- Clips directly to ear hole with no additional hardware required



Universal Padding Fit Kit

One size

- Multi-purpose helmet fit-enhancement pads
- Fits all Easton Batting and Catcher's helmets



Universal Facemask Hardware Kit

One Set

- Hardware for Universal BBSB Mask 2.0 Universal SB Mask 2.0

Pro X_{III} Skull Cap

Large/Extra Large	7 1/4" - 7 5/8"
Small/Medium	6 5/8" - 6 1/4"

- ABS Thermoplastic Shell with matte finish
- Classic-style skull cap which can be worn frontward or backward
- Soft dual-density foam for unparalleled comfort
- BioDri_{III} fabric liner absorbs moisture for added dryness and comfort
- Easton Screamin' E forehead sticker is removable for team customization



Black



Charcoal



Red



Navy



Royal

FASTPITCH BATTLING HELMETS



GHOST



LARGE VIEW PORT
FOR UNINTERRUPTED VISION

CLEARDRI™ AND AEGIS™
ANTI-MICROBIAL

IMPROVED FACEMASK
WITH ADDED JAW COVERAGE

INTEGRATED FACEMASK
WITH HIDDEN HARDWARE

Ghost™ Matte Two-Tone with Softball Mask

Two-Tone Matte Finish Batting Helmet with Integrated Facemask

Large/Extra Large 7 $\frac{1}{8}$ - 7 $\frac{3}{4}$ Hat Size

Medium/Large 6 $\frac{5}{8}$ - 7 $\frac{1}{4}$ Hat Size

T-Ball/Small 6 $\frac{1}{4}$ - 6 $\frac{5}{8}$ Hat Size

- Fastpitch-specific helmet designed with protection, comfort and visibility in mind for the female athlete
- Strategically engineered shell and padding reinforces crucial impact regions, while accommodating various hairstyles
- Three distinct shell sizes have extra plush foam to fit a wide range of head shapes and sizes
- ClearDri™ and Aegis™ Anti-Microbial treated forehead and cheek pads to fight off bacteria and sweat
- Improved facemask with added jaw coverage sits lower and closer to the face for maximum vision
- Integrated facemask with hidden hardware keeps the exterior sleek and seamless
- Included chinstrap clips directly to ear vents, minimizing weight and hardware
- Easton Screamin' E forehead sticker is removable for team customization
- Meets NOCSAE standard for all levels of play; Facemask certified for balls no smaller than 11" in circumference



Black / Charcoal



Red / Charcoal



Royal / Charcoal



Carolina Blue / Charcoal



Purple / Charcoal



Black / White



Navy / White



Royal / White



Carolina Blue / White

Ghost™ Matte with Softball Mask

Matte Finish Batting Helmet with Integrated Facemask

L/XL

M/L

TB/S



Black



Charcoal



White



Red



Maroon

NEW COLOR



Purple

NEW COLOR



Navy



Royal



Carolina Blue

NEW COLOR



Green

NEW COLOR

Alpha with Softball Mask

Solid Color Batting Helmet with Softball Only Mask

Large/Extra Large 7 $\frac{1}{8}$ - 7 $\frac{3}{4}$ Hat Size

Medium/Large 6 $\frac{5}{8}$ - 7 $\frac{1}{4}$ Hat Size

T-Ball/Small 6 $\frac{1}{4}$ - 6 $\frac{5}{8}$ Hat Size



- ABS Thermoplastic Shell with softball-specific cage for maximum protection
- Ponytail channel in padding, suitable for a variety of hair styles
- BioDri™ fabric liner absorbs moisture for added dryness and comfort
- Chinstrap and snap screws are included with each helmet
- Easton Screamin' E forehead sticker is removable for team customization
- NOCSAE certified for all levels of play; Facemask certified for balls no smaller than 11" in circumference



Black



White



Pink
(M/L & TB/S ONLY)



Purple
(M/L & TB/S ONLY)

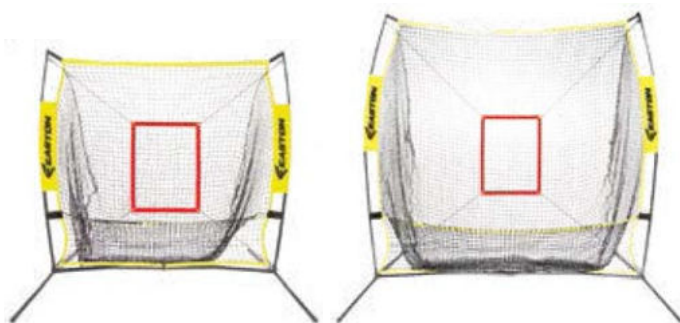


Carolina Blue
(M/L & TB/S ONLY)



Mint Green
(M/L & TB/S ONLY)

TRAINING AIDS & ACCESSORIES



5' XLP Net / 7' XLP Net

5' XLP Net

7' XLP Net

- Extra-large catch pocket provides a massive target area that will catch balls wherever they hit the net
- Lightweight and durable design available in 5' and 7' sizes
- Combination of steel (6 pieces) and fiberglass (2 pieces) rods make up net frame
- Heavy-duty netting lasts longer while adding weight to knock down and retain balls
- Elastic bands attach to frame creating bottom shelf to hold captured balls
- Entire net is double stitched to help prevent tearing
- Removable red strike zone included
- Set up and take down in less than one minute
- 43" carry bag

Ball Caddy

- One-of-a-kind design offers stand for batting practice and removable ball bag
- Will hold 100+ baseballs or 50+ softballs
- Ball bag made of tarpaulin and mesh includes a zippered cover and carry straps
- Includes stand and legs
- 47" carry bag
- Height: 3 ft.



Pop-Up L-Screen

7' W x 7' H

- Lightweight and durable L- Screen for easy transport
- 7' x 7' net sets up and breaks down in less than two minutes
- Four rectangular aluminum tubes create stable base
- Three steel and two fiberglass rods provide frame for net
- Extremely durable, heavy-duty 3 mm netting is double stitched to prevent tearing
- Recommended for ages 14 and under
- 47" carry bag
- Weight: 22 lbs.

Ball Caddy Bag

- Ball bag for Ball Caddy
- Will hold 100+ baseballs and 50+ softballs
- Ball bag made of tarpaulin and mesh includes a zippered cover and carry straps
- Multiple bags for each Ball Caddy ideal for practice drills
- Replacement for ball buckets



CXN™ Batting Tee

- Ultra-durable batting tee designed to withstand the rigors of daily tee work
- Telescoping rods adjust for tee height between 24.5" to 40"
- Heavy duty 8lb rubber base keeps tee stable during hitting
- Simple threaded screw design connects tee to the base
- Lightweight and durable aluminum / fiberglass rods with redesigned heavy duty rubber connection joints
- Durable dual wrapped tee topper protects tee from repetitive impacts and is weather resistant
- Designed for baseballs and softballs
- Weight: 10 LBS



Core Batting Tee

- Compact portable batting tee
- Spring-loaded legs for quick, easy set up
- Telescoping rods adjust for tee height between 28" to 46"
- Durable dual wrapped tee topper protects tee from repetitive impacts and is weather resistant
- Designed for baseballs and softballs



Deluxe Batting Tee

- Durable rubber batting tee
- Stem height adjusts from 27" to 36"
- Heavy-duty solid rubber base provides stability



Bat Tape

Red, Royal, Black, White

- Ideal for baseball/softball bats for improved bat grip
- Create custom designs and personalize your bat
- Lighter weight than traditional bat grips
- Can also be used to tape wrists



Hyperskin Basecamo™ Grip

Black, Red, Royal

- Textured, soft surface offers enhanced grip and enhanced bat control
- 1.2 mm grip



Hyperskin™ Grip

Black, Red, Royal

- Textured, soft surface offers enhanced grip and enhanced bat control
- 1.2 mm grip

Bat Choke

Black

- Fits over knob of all bats to increase control
- Ultra soft to absorb bat sting



Easton® Power Pad

Black, Red, Royal

- Reduces bat sting, helps protect heel of hand and improves grip



Training Bat Weights

5 oz. Speed Weight

10 oz. XL Weight

- Unique bat weight designed to be used while hitting
- Training aid intended to improve hand speed and barrel control
- Lighter, 5 oz. version, used to work quickness and improve hand speed
- Heavier, 10 oz. version, used to swing more mass and improve strength



16 oz. Bat Weight

- Weighted donut for on-deck circle





Easton® Training Stick

- 63" length is ideal for both adult and youth hitters
- Vibration-dampening handles on each end of a durable and flexible shaft



Thunderstick™ T10 / T11

Adult Size 33/37

Youth Size 30/26

- Unique hand-eye training aid
- 1" barrel diameter



Pro Stix Training Set

- Modeled after professional wood bat
- Ideal for whiffle ball or training sessions



Home Run Smash Foam Bat & Ball

Blue/Green, Pink/Purple

- Entry-level kit for a young player
- 24" foam covered plastic bat with monster barrel
- 10" foam ball included

Heavyweight Training Balls

9" Yellow 3-Pack

- Provides hitter and coach with instant feedback at contact
- Weighs 12 oz. with limited flight
- Raised seams for an authentic feel
- Textured surface provides better grip on the ball



Incredi-Ball® SoftTouch Training Balls

9" White 12-Pack

10" Neon 12-Pack

11" Neon 12-Pack

12" Neon 12-Pack

- Incredi-Ball® is soft to the touch and has reduced weight
- Traditional feel; with a synthetic leather cover
- Safer than a standard hard baseball
- Hardcore center provides instant batting feedback



Incredi-Ball® SoftStitch Training Balls

9" White 12-Pack

11" Neon 12-Pack

12" Neon 12-Pack

- Incredi-Ball® is soft to the touch and has reduced weight
- Nylon / cloth cover with authentic baseball-style stitching
- Safer than a standard hard baseball
- Hard core center provides instant batting feedback



Soft Training Balls

9" White 48-Pack	12" L x 12" W x 9" H
10" Neon 36-Pack	13.5" L x 10" W x 10" H
11" Neon 24-Pack	14.5" L x 11" W x 7.25" H
12" Neon 24-Pack	15.25" L x 12" W x 7.25" H

- Same weight as standard baseball or softball
- Traditional feel; with a synthetic leather cover
- Safer than a standard hard baseball or softball
- Ideal for team practice



Plastic Training Balls

9" White 6-Pack

- Limited-flight plastic training ball
- Great for batting practice





Fence Rack

31" W x 2 1/8" H

- Holds 12 bats

Magnetic Coaches Lineup Board

7" W x 10" H

- Create your lineup with clarity and ease
- Full playing field with positions printed onto the board
- Includes whiteboard marker, eraser, fence hook and magnetic strips
- Backside has clipboard functionality



Umpire Indicator

- Tracks strikes, balls, outs and innings



Home & Road Pitch Counter

- Tracks two pitchers at once



Eye Black

- Reduces glare from sun or stadium lights
- Easy application stick



Sliding Knee Pad

- Protective knee pad to be worn under pants
- Helps prevent scratches and abrasions from sliding
- Made of neoprene / polyester / nylon
- One size fits most

MEN'S APPAREL

RIVAL+

- More stretch
- Increased durability
- Lighter weight
- Modern taper fit
- Better cooling
- Three styles

Rival+ Pant

Solid	Adult XS-XXL	Youth S-XL
Piped	Adult XS-XXL	Youth S-XL

RIVAL+

- Embroidered Easton Screamin' E logo at the left back pocket
- Easton-branded, two-color elastic waistband _ Charcoal/Grey for all colorways
- Double-reinforced knees with a 7 1/4" -bottom hem opening
- Double metal-snap closure with metal zipper
- Double back-welt pockets with our seven-belt loop system
- Open-bottom hem opening
- Modern athletic fit
- 32" inseam for Adult Size Large, 27" inseam for Youth Size Large
- 100% polyester



Black



White



Grey



Easton Branded
Waistband



White/Black



White/Red



White/Navy



White/Royal



Grey/Black



Grey/Red



Grey/Navy



Grey/Royal



Adult	XS	S	M	L	XL	XXL
Waist	26-28	29-31	32-34	35-37	38-40	41-43
Inseam	29	30	31	32	33	33

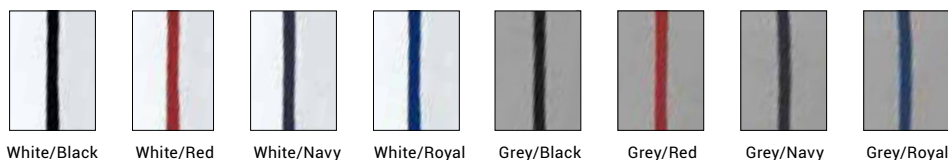
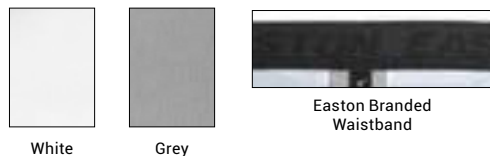
Youth	S	M	L	XL
Waist	23-25	25-27	27-29	29-31
Inseam	26	26 1/2	27	27.5

Rival+ Knicker

RIVAL+

Solid	Adult S-XXL	Youth S-XL
Piped	Adult S-XXL	Youth S-XL

- Embroidered Easton Screamin' E logo at the left back pocket
- Easton-branded, two color elastic waistband _ Charcoal/Grey for all colorways
- Double-reinforced knees and double metal-snap closure with metal zipper
- Double back-welt pockets with our seven-belt loop system
- Modern knicker fit with elastic cuff
- 18" inseam for Adult Size Large, 16" inseam for Youth Size Large
- 100% polyester fabric



Adult	XS	S	M	L	XL	XXL
Waist	26-28	29-31	32-34	35-37	38-40	41-43
Inseam	17	17	18	18	18½	19

Youth	S	M	L	XL
Waist	23-25	25-27	27-29	29-31
Inseam	15	15½	16	16½

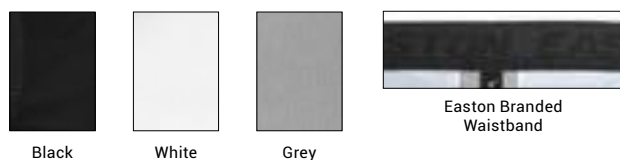
FINAL YEAR

Rival+ Pro Taper

RIVAL+

Solid	Adult XS-XXL	Youth S-XL
--------------	---------------------	-------------------

- Embroidered Easton Screamin' E logo at the left back pocket
- Easton-branded two-color elastic waistband _ Charcoal/Grey for all colorways
- Double-reinforced knees and double metal-snap closure with metal zipper
- Double back-welt pockets with our seven-belt loop system
- Modern fit tapered from the knee
- 31" inseam for Adult Size Large, 26" inseam for Youth Size Large
- 100% polyester



Adult	XS	S	M	L	XL	XXL
Waist	26-28	28-30	31-33	34-36	37-39	40-42
Inseam	29	30	31	32	33	33

Youth	S	M	L	XL
Waist	22-24	24-26	26-28	29-31
Inseam	25.5	26	27	27.5



Youth Pro+ Pull Up Pant

Youth XS-L

- Elastic waistband with drawstring
- Double-reinforced knees
- Batting glove back pocket with Easton Screamin' E embroidered logo
- Five-belt loop system
- Updated fit and elastic bottom leg opening
- 19" inseam for Youth Size Large
- 100% polyester

Youth	YXS	YS	YM	YL	YXL
Waist	20-22	23-25	26-28	28-30	30-32
Inseam	16	17	18	19	20



Black



White



Grey



FINAL YEAR

Gameday Stretch Woven Jacket

Adult S-XXL

- Hooded half-zip front with molded plastic zipper
- Two-color tonal heat transfer Easton Screamin' E logo on right shoulder and small Easton logo at the lower back hem
- Zippered side pockets with internal cell phone pocket
- Laser perforated underarm gussets with bungee bottom cinch
- Lightweight 88% polyester/12% spandex body



Charcoal



Grey

Sizes	S	M	L	XL	XXL
Chest	42	44	46	48	50
Length	28	29	30	31.5	33



Alpha™ Cage Jacket

Long Sleeve	Adult S-XXL	Youth S-XL
Short Sleeve	Adult S-XXL	Youth S-XL

- 8" zipper front with custom zipper garage and Homeplate™ logo
- Front on-seam pockets with an internal cell phone pocket
- Contrast elastic bound hem and cuffs
- Lightweight 100% polyester woven body / sleeves with jersey mesh side inserts



Black/Silver



Grey/Black



Red/Silver



Navy/Silver



Royal/Silver



Black/Silver



Grey/Black



Red/Silver



Navy/Silver



Royal/Silver



Custom Zipper



Elastic Hem



Easton Linear Logo Tee

Adult S-XXL

- Athletic fit, but not slim
- Center-front, screen-printed Easton linear logo
- 100% cotton



FINAL YEAR

Alpha™ Performance Tee

Short Sleeve | Adult S-XXL | Youth S-XL

- Mesh-backed jersey fabric promotes moisture movement
- Easton heat transfer logo on the sleeve
- 100% polyester



Black



White



Red



Navy



Royal



Green



Charcoal

FINAL YEAR

Alpha™ Short

Adult S-XXL | Youth S-XL

- Mesh-backed jersey fabric promotes moisture movement
- 100% polyester
- 9" inseam for Adult Sizes



Black



Charcoal



Navy



WOMEN'S APPAREL

PROWESS

- More stretch
- Increased durability
- Better player fit
- Breathable mesh

FINAL YEAR

Women's Prowess® Pant

Solid	Women's XS-XXL	Girl's S-L
Piped	Women's XS-XXL	

- Easton-branded, two-color elastic waistband with silicone grippers
- Double-reinforced knees with a custom engineered cuff
- Double metal-snap closure with SBS metal zipper
- Double back-welt pockets with our seven-belt loop system
- Four-way-stretch mesh crotch gussets for the ultimate fit, comfort and mobility
- Die-cut, twill heat transfer Easton Screamin' E logo at center back belt loop
- 100% polyester-knit interlock fabric



Easton Branded Waistband



Black



Charcoal



White



White/Black



White/Red



White/Navy



White/Royal



Black/White



Black/Red



Black/Royal

Women's	XS	S	M	L	XL	XXL
Waist	24-26	26-28	28-30	30-32	33-35	36-38
Inseam	21	21.5	22	22.5	23	23.5

Girl's	S	M	L
Waist	22-24	24-26	26-28
Inseam	15.5	16.5	17.5

NEW**Gameday Stretch Pant** (Formerly Rawlings WYP Pant)**Adult S-XXL**

- Soft 4-way stretch fabric gives an Ultra-Stretch Fit
- Compression Fit
- Dual-layered woven fabric actively transfers energy while sliding
- Exceptionally durable for season-long usage
- 4D Ergonomic stitching reduces excess fabric and enhances mobility
- Comfortable flat elastic leg hem
- Belt and tunnel loops for professional look
- Branded gripper elastic waist
- 88% Polyester/12% Spandex

Easton Branded
Waistband

Black



Graphite



White



Navy

Women's	XS	S	M	L	XL	XXL
Inseam	19 $\frac{1}{2}$	20 $\frac{1}{2}$	21	21	22	22 $\frac{1}{2}$

NEW**Pro Elite Pant** (Formerly Rawlings WLNCH Pant)**Women's S-2XL | Girl's S-XL**

- Enhanced mechanical stretch polyester fabric
- Gel-grip Easton branded waistband with belt loops
- Double-reinforced knees

Easton Branded
Waistband

Black



Graphite



White



Blue/Grey



Red



Navy



Royal

Women's	S	M	L	XL	XXL
Inseam	21 $\frac{1}{2}$	22	22 $\frac{1}{2}$	23	23 $\frac{1}{2}$

Girl's	S	M	L
Inseam	15 $\frac{1}{2}$	16	18



NEW

Elite Performance Top

Women's XS-XXL

- Short sleeve, crew neck performance jersey with raglan sleeve
- Body: Pro Dri 100% poly interlock
- Sleeves: Pro Dri 100% poly mesh



Black



Red



Navy



Royal



Cardinal



Columbia Blue



Dark Green



Maroon



Purple



Women's Pro+ Sleeveless Tee

Women's XS-XXL

- Sleeveless crew neck with scoop back
- Relaxed fit, drop tail
- Blank front with Easton heat transfer logos at the center-back neck and rear-side hem
- 100% polyester



Women's Softball Hooded Fleece

Women's S-XXL

- Rib cuffs and raglan sleeves
- Garment washed 7 oz. super soft fleece
- Standard fit
- Unfinished front neck and drop-tail bottom
- 60% ring-spun cotton / 40% polyester



NEW

Logo'd Hat

One-Size Snapback

- Premium Flexfit Snapback Cap
- Wool fabric with black undervisor
- Easton logo embroidered on front and side

**NEW**

No Place Like Home Hat

Adult S/M & L/XL

- Premium Flexfit Snapback Cap
- Embroidered Felt Patch on front
- Embroidered Easton logo on the side

**NEW**

3Pete Flex SB Hat

One-Size Snapback

- Snapback Hat with Flexfit Band
- Mesh Back
- 3D Easton branding



SUBLIMATED APPAREL



RECOMMENDED SUBLIMATION FABRICS

PRO



140

- 140 CLOTH**
- 88% polyester/12% spandex
 - Circular knit
 - Moisture Management

COLLEGIATE



150

- 150 CLOTH**
- 100% polyester
 - Circular knit
 - Moisture Management

74

- 74 CLOTH**
- 95% polyester/5% spandex
 - **While Supplies Last!**

247

- 247 CLOTH**
- 92% polyester/8% spandex
 - Pointelle stretch mesh

TRAVEL BALL

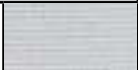

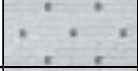
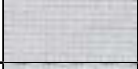


167

- 167 CLOTH**
- 100% polyester
 - Pin-dot mesh
 - Moisture Management

126

- 126 CLOTH**
- 100% polyester
 - Lightweight flatback mesh

Fabric Offerings

FABRICS			CONTENT	WEIGHT	PROPERTIES	USE
PRO	140		88% polyester 12% spandex	280g	Circular Knit Moisture Management	Pants Jerseys
COLLEGIATE	150		100% polyester	300g	Circular Knit Moisture Management	Pants Jerseys
	247		92% polyester 8% spandex	240g	Pointelle Stretch Mesh	Jerseys
	74		95% polyester 5% spandex	235g	WHILE SUPPLIES LAST	Jerseys
TRAVEL BALL	126		100% polyester	165g	Lightweight Flatback Mesh	Jerseys
	170		100% polyester	195g	AVAILABLE FALL 2022 Textured Knit	Jerseys

Sizing

WOMEN'S JERSEYS

WOMEN'S	BUST	WAIST	GIRL'S	BUST	WAIST
SMALL	34_36	30_32	SMALL	24_26	21_23
MEDIUM	37_39	33_35	MEDIUM	27_29	24_26
LARGE	40_42	36_38	LARGE	30_32	27_29
XL	43_45	39_41	XL	33_35	30_32
XXL	46_49	42_44			

WOMEN'S PANTS

WOMEN'S	WAIST	HIPS	INSEAM	GIRL'S	WAIST	HIPS	INSEAM
SMALL	25_27	32_34	21 1/2"	SMALL	18_20	26_28	14 1/2"
MEDIUM	28_30	35_37	22"	MEDIUM	21_23	29_30	16"
LARGE	31_33	38_40	22 1/2"	LARGE	24_26	31_32	18"
XL	34_36	41_43	23"	XL	27_29	33_34	19 1/2"
XXL	37_39	44_46	23 1/2"				

Sublimated Insert/Number Designs



AUTO CAMO

AUTO
DIGITAL CAMO

BUSTED DOTS

BUSTED
HONEYCOMB

CAMO



CHECK



CRACKLE



DIGITAL CAMO



ELECTRIC



FADE



FLANNEL

GRADIENT
DOTS

HEATHER



HOUNDSTOOTH



PLATED



PRO STRIPE



SCRATCH



SHUTTER



SOLID



SPLAT



SPLIT



TRIAD STRIPE



ZEBRA DOTS

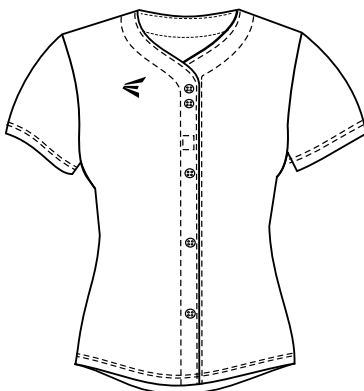
Vaporfusion™ Color Offering:

B	W	PT	GC	SG	BG	GR	DSW	DB	MA	C	HP	LP	TR	S	TX	BO	TO	AG	CMB	CMT	CMG	OG	VG	LT	LG	YLW	LIME	FLG	K	DG	TE	AQ	MB	FLB	CB	CAB	AF	R	N	MN	PU
Black	White	Putty	Giants Cream	Silver Grey	Blue Grey	Graphite	Dark Shadow	Dark Brown	Maroon	Cardinal	Hot Pink	Light Pink	True Red	Scarlet	Texas Orange	Burnt Orange	Tennessee Orange	Army Green	Camo Brown	Camo Tan	Camo Green	Old Gold	Vegas Gold	Light Old Gold	Light Gold	Yellow	Lime Green	Flourescent Green	Kelly Green	Dark Green	Teal	Aqua	Marlin Blue	Flourescent Blue	Columbia Blue	Carolina Blue	A.F.A. Blue	Royal	Navy	Midnight Navy	Purple

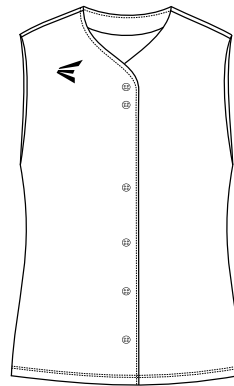
Choose your template



EASWFBR/EASWFBRG
FULL BUTTON RAGLAN SLEEVE JERSEY



EASWFBS/EASWFBSG
FULL BUTTON SET-IN SLEEVE JERSEY



EASWFBSL/EASWFBSLG
FULL BUTTON SLEEVELESS JERSEY

AVAILABLE IN WOMEN'S SIZES S-4XL, GIRL'S SIZES S-XL

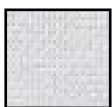
Pick your fabric

Pro



140

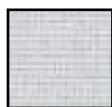
Collegiate



150



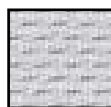
247



74

WHILE SUPPLIES LAST

Travel Ball



126



170

AVAILABLE FALL 2022

Add Options

- OP1 Piping/Braid around neck and down front placket of full button jersey in $\frac{1}{8}$ ", $\frac{3}{8}$ ", or 1" widths.
- OP2 Piping/Braid around edge of neck in $\frac{1}{8}$ " or $\frac{3}{8}$ " widths.
- OP3 Piping/Braid 1" above both sleeve ends (edge of armhole for sleeveless styles) in $\frac{1}{8}$ ", $\frac{3}{8}$ ", or 1" widths.
- OP3E Piping/Braid on both sleeve edges in $\frac{1}{8}$ ", $\frac{3}{8}$ ", or 1" widths.
- FAUX Faux button placket on full button jersey.
- EEL Extra length.

Vaporfusion™ Color Offering:

B	W	PT	GC	SG	BG	GR	DSW	DB	MA	C	HP	LP	TR	S	TX	BO	TO	AG	CMB	CMT	CMG	OG	VG	LT	LG	YLW	LIME	FLG	K	DG	TE	AQ	MB	FLB	CB	CAB	AF	R	N	MN	PU
Black	White	Putty	Giants Cream	Silver Grey	Blue Grey	Graphite	Dark Shadow	Dark Brown	Maroon	Cardinal	Hot Pink	Light Pink	True Red	Scarlet	Texas Orange	Burnt Orange	Tennessee Orange	Army Green	Camo Brown	Camo Tan	Camo Green	Old Gold	Vegas Gold	Light Old Gold	Light Gold	Yellow	Lime Green	Flourescent Green	Kelly Green	Dark Green	Teal	Aqua	Martin Blue	Flourescent Blue	Columbia Blue	Carolina Blue	A.E.A. Blue	Royal	Navy	Midnight Navy	Purple

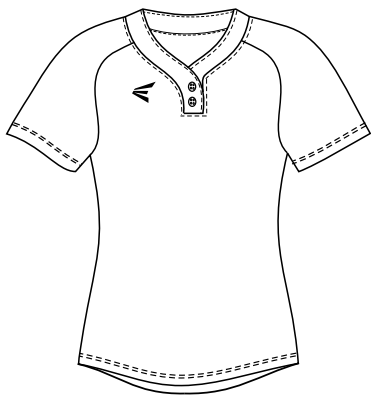


SLEEVELESS DESIGNS AVAILABLE FOR ALL STYLES

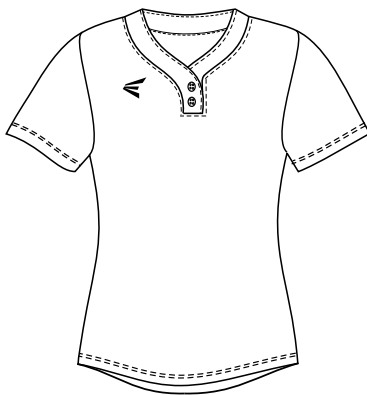
See pages 94-95 for DYO inspiration

Team names, logos and colors are for demonstration purposes only and are not meant to identify any affiliation with Easton Sports.

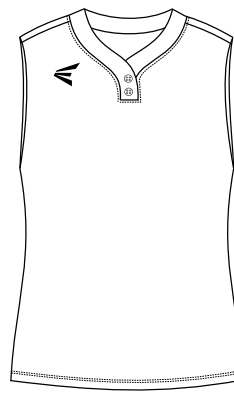
Choose your template



EASW2BR/EASW2BRG
2-BUTTON RAGLAN SLEEVE JERSEY



EASW2BS/EASW2BSG
2-BUTTON SET-IN SLEEVE JERSEY



EASW2BSL/EASW2BSLG
2-BUTTON SLEEVELESS JERSEY

AVAILABLE IN WOMEN'S SIZES S-4XL, GIRL'S SIZES S-XL

Pick your fabric

Pro



140

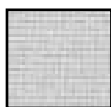
Collegiate



150



247



74

WHILE SUPPLIES LAST

Travel Ball



126



170

AVAILABLE FALL 2022

Add Options

- OP2 Piping/Braid around edge of neck in $\frac{1}{8}$ " or $\frac{3}{8}$ " widths.
 OP3 Piping/Braid 1" above both sleeve ends (edge of armhole for sleeveless styles) in $\frac{1}{8}$ ", $\frac{3}{8}$ ", or 1" widths.
 OP3E Piping/Braid on both sleeve edges in $\frac{1}{8}$ ", $\frac{3}{8}$ ", or 1" widths.
 EEL Extra length.
 HIDDEN Neck placket with non-visible buttons.

Vaporfusion™ Color Offering:

B	W	PT	GC	SG	BG	GR	DSW	DB	MA	C	HP	LP	TR	S	TX	BO	TO	AG	CMB	CMT	CMG	OG	VG	LT	LG	YLW	LIME	FLG	K	DG	TE	AQ	MB	FLB	CB	CAB	AF	R	N	MN	PU
Black	White	Patty	Giant Cream	Silver Grey	Blue Grey	Graphite	Dark Shadow	Dark Brown	Maroon	Cardinal	Hot Pink	Light Pink	True Red	Scarlet	Texas Orange	Burnt Orange	Tennessee Orange	Army Green	Camo Brown	Camo Tan	Camo Green	Old Gold	Vegas Gold	Light Old Gold	Light Gold	Yellow	Lime Green	Flourescent Green	Kelly Green	Dark Green	Teal	Aqua	Marlin Blue	Flourescent Blue	Columbia Blue	Carolina Blue	A.E.A. Blue	Royal	Navy	Midnight Navy	Purple

DF



BB



WING



ARZ



HA



CHI



HOUS



RJOAK



MB



HRD



CW2B



DYO

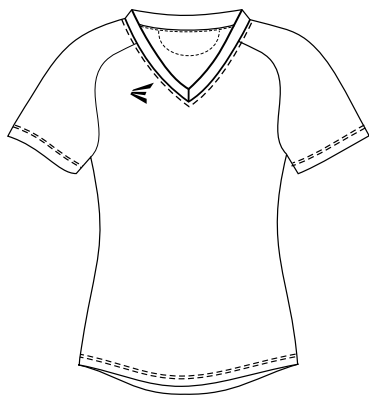


SLEEVELESS DESIGNS AVAILABLE FOR ALL STYLES

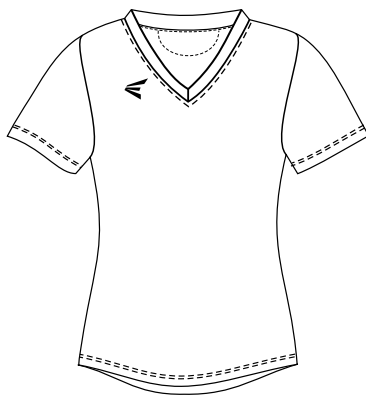
See pages 94-95 for DYO inspiration

Team names, logos and colors are for demonstration purposes only and are not meant to identify any affiliation with Easton Sports.

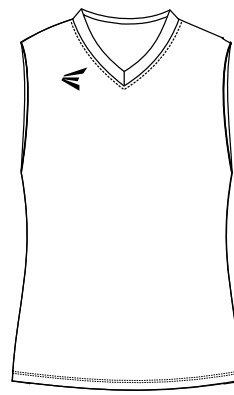
Choose your template



EASWVNR/EASWVNRG
V-NECK RAGLAN SLEEVE JERSEY



EASWVNS/EASWVNSG
V-NECK SET-IN SLEEVE JERSEY



EASWVNSL/EASWVNSLG
V-NECK SLEEVELESS JERSEY

AVAILABLE IN WOMEN'S SIZES S-4XL, GIRL'S SIZES S-XL

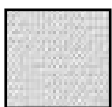
Pick your fabric

Pro



140

Collegiate



150



247



74

WHILE SUPPLIES LAST

Travel Ball



126



170

AVAILABLE FALL 2022

Add Options

- OP2 Piping/Braid around edge of neck in $\frac{1}{8}$ " or $\frac{3}{8}$ " widths.
- OP3 Piping/Braid 1" above both sleeve ends (edge of armhole for sleeveless styles) in $\frac{1}{8}$ ", $\frac{3}{8}$ ", or 1" widths.
- OP3E Piping/Braid on both sleeve edges in $\frac{1}{8}$ ", $\frac{3}{8}$ ", or 1" widths.
- EEL Extra length.

Vaporfusion™ Color Offering:

B	W	PT	GC	SG	BG	GR	DSW	DB	MA	C	HP	LP	TR	S	TX	BO	TO	AG	CMB	CMT	CMG	OG	VG	LT	LG	YLW	LIME	FLG	K	DG	TE	AQ	MB	FLB	CB	CAB	AF	R	N	MN	PU
Black	White	Patty	Giant Cream	Silver Grey	Blue Grey	Graphite	Dark Shadow	Dark Brown	Maroon	Cardinal	Hot Pink	Light Pink	True Red	Scarlet	Texas Orange	Burnt Orange	Tennessee Orange	Army Green	Camo Brown	Camo Tan	Camo Green	Old Gold	Vegas Gold	Light Old Gold	Light Gold	Yellow	Lime Green	Flourescent Green	Kelly Green	Dark Green	Teal	Aqua	Marlin Blue	Flourescent Blue	Columbia Blue	Carolina Blue	A.E.A. Blue	Royal	Navy	Midnight Navy	Purple

BB



WING



ARZ



HA



CHI



HOUS



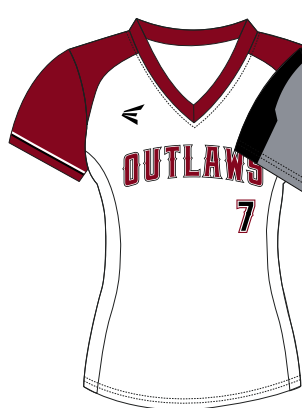
RJOAK



MB



HRD



CLNCHJ



NYMJ



DF



DYO



SLEEVELESS DESIGNS AVAILABLE FOR ALL STYLES

See pages 94-95 for DYO inspiration

Team names, logos and colors are for demonstration purposes only and are not meant to identify any affiliation with Easton Sports.

Create and design a completely custom look by contacting your local team sales rep.
We can design or match any style or look. Below are a few examples of styles we have created.



Team names, logos and colors are for demonstration purposes only and are not meant to identify any affiliation with Easton Sports.

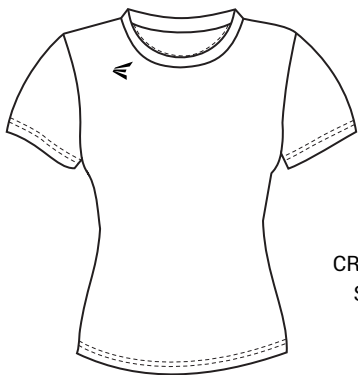


Team names, logos and colors are for demonstration purposes only and are not meant to identify any affiliation with Easton Sports.

FASTRACK



FTWVN/FTWVNG
V-NECK SET-IN SLEEVE JERSEY
Sizes: Women S-2XL, Girls S-XL



FTWCN/FTWCNG
CREW NECK SET-IN SLEEVE JERSEY
Sizes: Women S-2XL, Girls S-XL



36

36 Cloth _ 95% polyester 5% spandex

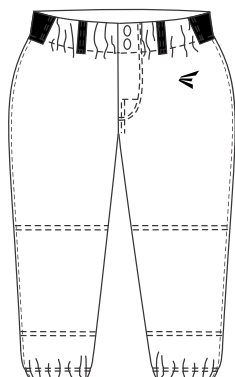
Vaporfusion™ Color Offering:

B	W	PT	GC	SG	BG	GR	DSW	DB	MA	C	HP	LP	TR	S	TX	BO	TO	AG	CMB	CMT	CMG	OG	VG	LT	LG	YLW	LIME	FLG	K	DG	TE	AQ	MB	FLB	CB	CAB	AF	R	N	MN	PU
Black	White	Patty	Giants Cream	Silver Grey	Blue Grey	Graphite	Dark Shadow	Dark Brown	Maroon	Cardinal	Hot Pink	Light Pink	True Red	Scarlet	Texas Orange	Burnt Orange	Tennessee Orange	Army Green	Camo Brown	Camo Tan	Camo Green	Old Gold	Vegas Gold	Light Old Gold	Light Gold	Yellow	Lime Green	Flourescent Green	Kelly Green	Dark Green	Teal	Aqua	Martin Blue	Flourescent Blue	Columbia Blue	Carolina Blue	A.E.A. Blue	Royal	Navy	Midnight Navy	Purple

Create and design a completely custom look by contacting your local team sales rep.
We can design or match any style or look. Below are a few examples of styles we have created.

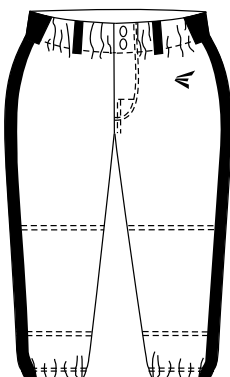
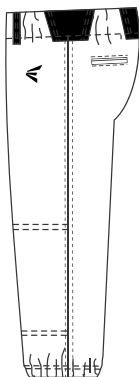


Team names, logos and colors are for demonstration purposes only and are not meant to identify any affiliation with Easton Sports.



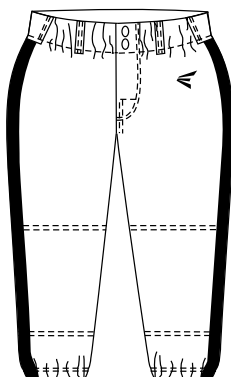
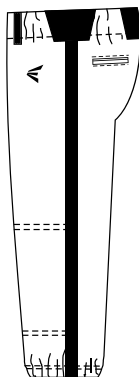
FXCLPVF/FXCLPVFG

• Women's: S_4XL
• Girls: S_XL



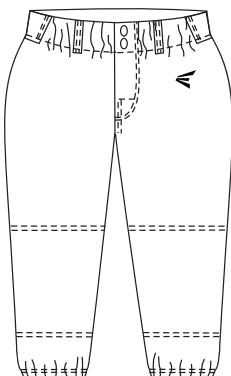
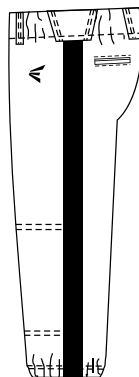
FXCLP2VF/FXCLP2VFG

2" INSERT
• Women's: S_4XL
• Girls: S_XL



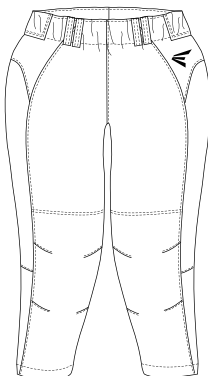
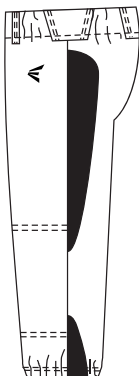
FXCLP3VF/FXCLP3VFG

3" INSERT
• Women's: S_4XL
• Girls: S_XL



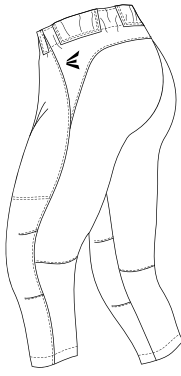
FXCIPVF/FXCIPVFG

• Women's: S_4XL
• Girls: S_XL



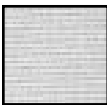
CWYP/CWYPPG

Women's: S_4XL
• Girls: S_XL



Pick your fabric

Pro



140

Collegiate



150

Add Options

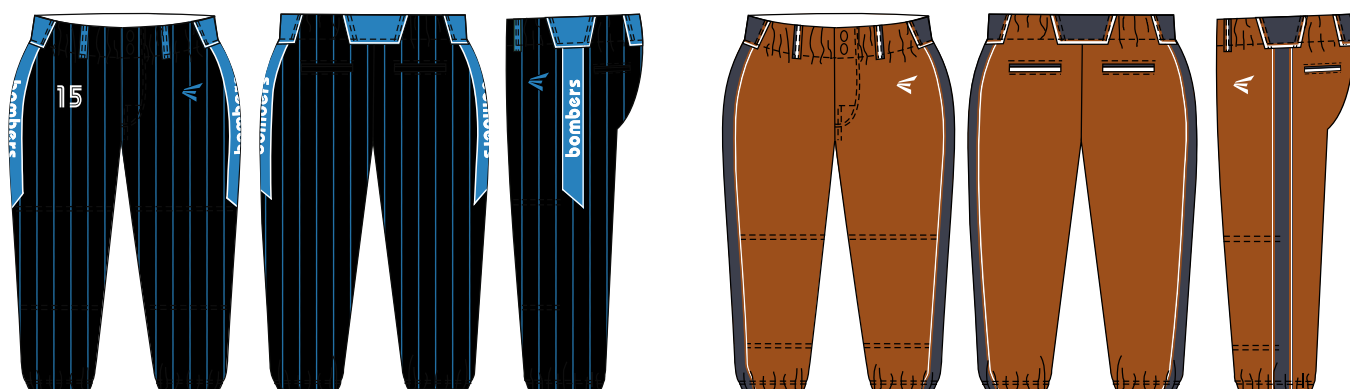
- OP4 Piping/Braid down both sideseams of pant in 1/8", 3/8", 1/2", 3/4", 1", 1 1/2" and 2" widths.
OP5 Specify hemmed length in whole inches for un-hemmed pants, and specify with or without elastic.
OP15 Piping/Braid around tunnel loops in 1/8", or 3/8" widths.
EEL Extra length.

Vaporfusion™ Color Offering:

B	W	PT	GC	SG	BG	GR	DSW	DB	MA	C	HP	LP	TR	S	TX	BO	TO	AG	CMB	CMT	CMG	OG	VG	LT	LG	YLW	LIME	FLG	K	DG	TE	AQ	MB	FLB	CB	CAB	AF	R	N	MN	PU
Black	White	Putty	Giants Cream	Silver Grey	Blue Grey	Graphite	Dark Shadow	Dark Brown	Maroon	Cardinal	Hot Pink	Light Pink	True Red	Scarlet	Texas Orange	Burnt Orange	Tennessee Orange	Army Green	Camo Brown	Camo Tan	Camo Green	Old Gold	Vegas Gold	Light Old Gold	Light Gold	Yellow	Lime Green	Flourescent Green	Kelly Green	Dark Green	Teal	Aqua	Marlin Blue	Flourescent Blue	Columbia Blue	Carolina Blue	A.E.A. Blue	Royal	Navy	Midnight Navy	Purple



DYO TEMPLATES AVAILABLE



Sublimated Pant Body Designs



FLANNEL



HEATHER



PRO STRIPE



SOLID



TRIAD STRIPE

Anaheim One, two or three colors	ABCDEFGHIJKLMNOPQRSTUVWXYZ
Anaheim One, two or three colors 2", 3", 4", 6", 8", 10" and 12"	0123456789
Arizona One or two colors	ABCDEFGHIJKLMNOPQRSTUVWXYZ
Arizona 47 - Trim Version One, two or three colors Adult: 3", 4", 6", 8" and 10" Youth: 3", 4" and 6"	0123456789
Brush Script* One, two or three colors	ABCDEFGHIJKLMNOPQRSTUVWXYZ abcdefghijklmnopqrstuvwxyz
Brush Script One, two or three colors 2", 3", 4", 6", 8", 10" and 12"	0123456789
Connecticut One, two or three colors	ABCDEFGHIJKLMNOPQRSTUVWXYZ
Connecticut One, two or three colors 3", 4", 6", 8", 10" and 12"	0123456789
Fancy One, two or three colors	ABCDEFGHIJKLMNOPQRSTUVWXYZ
Fancy 47 - Trim Version One, two or three colors 2", 3", 4", 6", 8", 10" and 12"	0123456789
Full Block One, two or three colors	ABCDEFGHIJKLMNOPQRSTUVWXYZ
Full Block One, two or three colors 2", 3", 4", 6", 8", 10" and 12"	0123456789
Maryland One, two or three colors	ABCDEFGHIJKLMNOPQRSTUVWXYZ
Maryland One, two or three colors 3", 4", 6", 8", 10" and 12"	0123456789

- VaporFusion™ Twill and VaporFusion™ Sublimation fonts can be chosen in one, two, or three colors
- Standard rule for Brush Script and Script is the first letter is upper case and all other letters are lower case. Ex: High School. Customer must specify that all upper case letters are requested.

Method One, two or three colors	<i>ABCDEFGHIJKLMNOPQRSTUVWXYZ</i>
Method One, two or three colors 2", 3", 4", 6", 8", 10" and 12"	<i>0123456789</i>
Miami One or two colors	<i>ABCDEFGHIJKLMNOPQRSTUVWXYZ</i>
Miami 47 - Trim Version One, two or three colors 2", 3", 4", 6", 8", 10" and 12"	<i>0123456789</i>
Monolith One, two or three colors	<i>ABCDEFGHIJKLMNOPQRSTUVWXYZ</i>
Monolith One, two or three colors 2", 3", 4", 6", 8", 10" and 12"	<i>0123456789</i>
Plain Block One, two or three colors	<i>ABCDEFGHIJKLMNOPQRSTUVWXYZ</i>
Plain Block One, two or three colors 2", 3", 4", 6", 8", 10" and 12"	<i>0123456789</i>
Rock One, two or three colors	<i>ABCDEFGHIJKLMNOPQRSTUVWXYZ</i>
Rock One, two or three colors 2", 3", 4", 6", 8", 10" and 12"	<i>0123456789</i>
Script* One, two or three colors	<i>ABCDEFGHIJKLMNOPQRSTUVWXYZ abcdefghijklmnopqrstuvwxyz</i>
Stinger One, two or three colors	<i>ABCDEFGHIJKLMNOPQRSTUVWXYZ</i>
Stinger One, two or three colors 2", 3", 4", 6", 8", 10" and 12"	<i>0123456789</i>

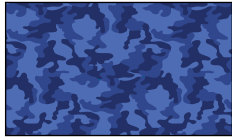
- VaporFusion™ Twill and VaporFusion™ Sublimation fonts can be chosen in one, two, or three colors
- Standard rule for Brush Script and Script is the first letter is upper case and all other letters are lower case.
Ex: High School. Customer must specify that all upper case letters are requested.



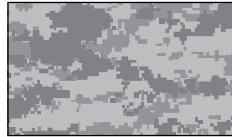
VaporFusion™ is the process of fusing ink into fabric fibers to create permanently bonded colors. This state-of-the-art equipment is used to decorate Easton's finest premium fabrics and twill. VaporFusion™ is lighter, faster, and more durable.

SUBLIMATED TWILL

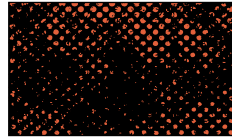
Twill just got faster—24% lighter than standard 1-color twill
Twill just got more functional—has more “give” than standard twill application
Twill just got more personal—boundless customization with 30+ colors



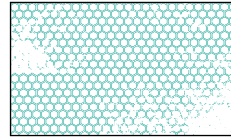
AUTO CAMO
Shown with
Color 1: Navy



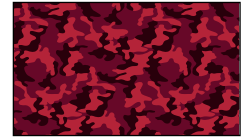
AUTO DIGITAL CAMO
Shown with
Color 1: Blue Grey



BUSTED DOTS
Shown with
Color 1: Black
Color 2: Burnt Orange



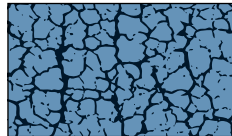
BUSTED HONEYCOMB
Shown with
Color 1: White
Color 2: Teal



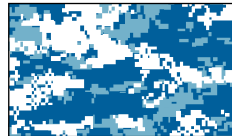
CAMO
Shown with
Color 1: Scarlet
Color 2: Cardinal
Color 3: Black



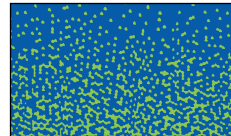
CHECK
Shown with
Color 1: Dark Green
Color 2: Kelly Green



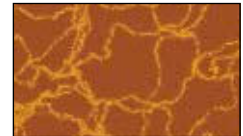
CRACKLE
Shown with
Color 1: Navy
Color 2: Columbia Blue



DIGITAL CAMO
Shown with
Color 1: White
Color 2: Royal
Color 3: Columbia Blue



DIGITAL FADE
Shown with
Color 1: Flourescent Blue
Color 2: Flourescent Green



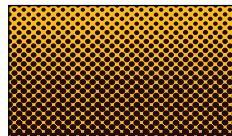
ELECTRIC
Shown with
Color 1: Texas Orange
Color 2: Tennessee Orange



FADE
Shown with
Color 1: Black
Color 2: Cardinal



FLANNEL
Simulated Flannel Texture



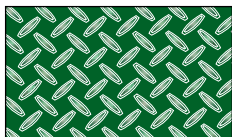
GRADIENT DOTS
Shown with
Color 1: Light Gold
Color 2: Black



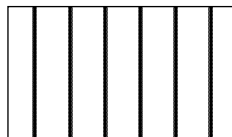
HEATHER
Shown with
Color 1: Royal



HOUNDS TOOTH
Shown with
Color 1: Scarlet
Color 2: Black



PLATED
Shown with
Color 1: Dark Green
Color 2: Plate Design is ALWAYS Silver Gray



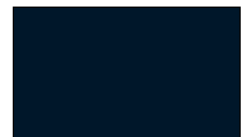
PRO STRIPE
Shown with
Color 1: White
Color 2: Black



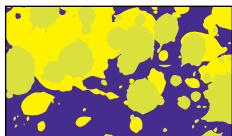
SCRATCH
Shown with
Color 1: Royal
Color 2: Black



SHUTTER
Shown with
Color 1: Black
Color 2: Cardinal



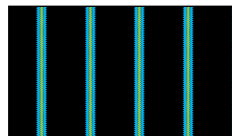
SOLID
Shown with
Color 1: Navy



SPLAT
Shown with
Color 1: Yellow
Color 2: Flourescent Green
Color 3: Purple



SPLIT
Shown with
Color 1: Columbia Blue
Color 2: Blue Gray
Color 3: Marlin Blue



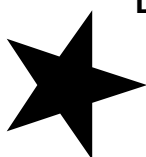
TRIAD STRIPE
Shown with
Color 1: Black
Color 2: Flourescent Blue
Color 3: Flourescent Green
Color 4: Flourescent Blue



ZEBRA DOTS
Shown with
Color 1: Hot Pink
Color 2: Graphite

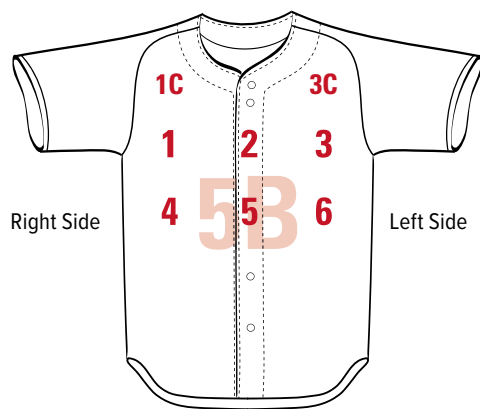
Stock Mascots offered in 1 or 2 colors. Must be ordered as pictured with the black portion as Color #1 and the white as Color #2. If design or color specifications are altered, the art is no longer stock and will be considered custom.

ADDITIONAL DESIGNS AT MYLOCKER.RAWLINGS.COM

 EAGLE 1 A1	 BIRD 8 H2	 BIRD 10 J2	 BIRD 14 N2	 BIRD 18 K3	 CARDINAL 1 G8
 RAM 1 A3	 RAM 2 B3	 HORSE 5 L6	 HORSE 8 H7	 HORSE 9 I7	 MUSTANG 2 G4
 BULLDOG 1 D7	 BULLDOG 2 E7	 BULLDOG 3 F7	 WILDCAT 1 A5	 PANTHER 1 D5	 TIGER 1 A7
 BEAR 1 D4	 PIRATE 2 F6	 PIRATE 3 G6	 PIRATE 8 L26	 SPARTAN 2 B6	 COMIC TROJAN D6
 KNIGHT 2 F2	 KNIGHT 3 G2	 BRAVE 2 C4	 PAW 1 C3	 PAW 2 D3	 PAW 11 H18
 PAW 15 L18	 BASEBALL 1 E8	 DEVIL G3	 INSECT 3 J16	 STAR 3 J29	 STAR 5 L29
 LIGHTNING 2 I30	 MISC 3 J35	 MISC 15 H37	 MISC 17 J37	 VaporFusion Only US FLAG USFL	

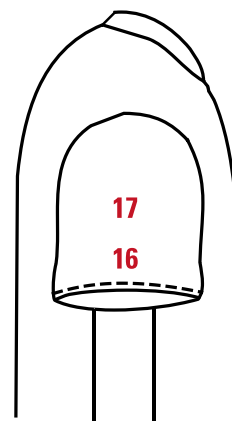
These drawings are for illustration purposes only. Easton® expressly disclaims any rights in these mascot drawings. The customer is solely responsible for obtaining permission or a license to use proprietary marks.

CUSTOM APPAREL
DECORATION PLACEMENTS

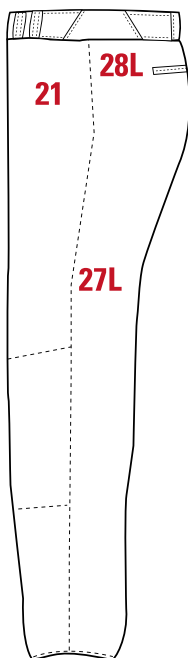
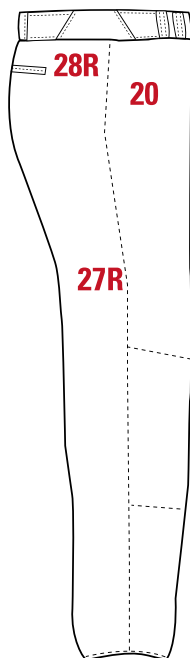


Right Side

Left Side



Watermarks: Choose from 36 similar tints of our standard colors.
Must choose the same color as the body color.



2T_Type in Tail

- 1 Upper Right Chest_7" down from shoulder seam
- 1C Upper Right Chest_Centered above lowest point of collar seam
- 2 Upper Center Chest_1½" down from neck trim or between 2nd and 3rd buttons
- 3 Upper Left Chest_7" down from shoulder seam
- 3C Upper Left Chest_Centered above lowest part of collar seam
- 4 Middle Right_1" below name
- 5 Front Center_1" below name
- 5B Front Center_Background auto-gradient of color chosen
- 6 Middle Left_1" below name

- 14P ½" Below neck/collar seam
- 14 3" Below neck/collar seam
- 16 (L/R)_½" Above sleeve seam
- 17 (L/R)_Center sleeve
- 20 Upper Right Front_6" down from raw edge top
- 21 Upper Left Front_6" down from raw edge top
- 27 (L/R)_Side of pant centered from top to bottom
- 28 (L/R)_Upper pant of short 3" down from top of pant
- 30 Full Back_6" below collar seam; on jersey_2" down from cowl seam
- 30B Full Back_Background auto-gradient of color chosen
- 30N Full Back_8" below collar seam to allow space for name plates
- 33B Back Tunnel Loop_Available on sublimated pants only



STRAIGHT



SLANTED



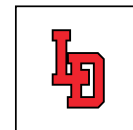
ANGLED



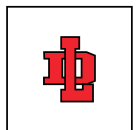
VERTICAL
ARCH



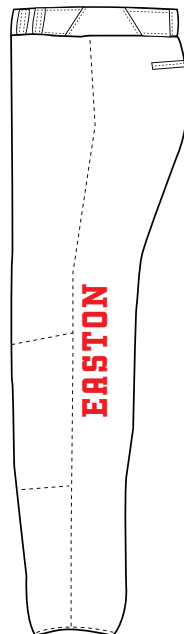
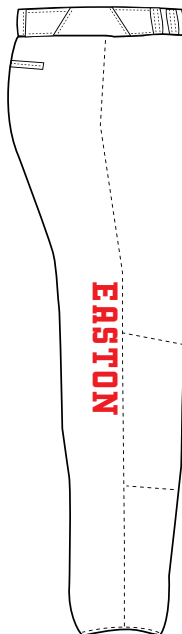
BRIDGED
ARCH



STEP DOWN &
INTERLOCKING
Specify each
letter size



INTERLOCKING
Specify each
letter size



VERTICAL STRAIGHT
Letters down right side of pant or jersey
insert, and going up left side



STEP DOWN
Specify each letter size

STOCK TRIMS

3/8" BRAID,
PATTERN #3

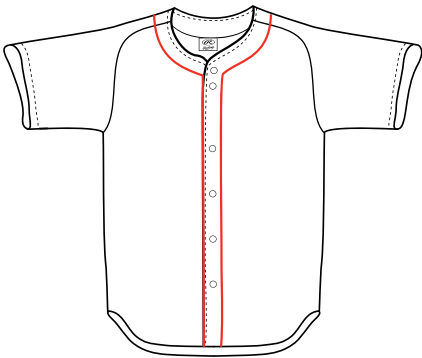
B	N	N	N	N	R	R	R	S	S	LG	PU	N
S	S	W	LG	CB	B	W	B0	B	W	B	W	W
B	N	N	N	N	R	R	R	S	S	LG	PU	S

1/8" PIPING,
PATTERN #1

B - Black	B0 - Burnt Orange	C - Cardinal	CB - Columbia Blue	DG - Dark Green	K - Kelly Green	LG - Light Gold	MA - Maroon	N - Navy Blue	PU - Purple	R - Royal	S - Scarlet	GR - Graphite	SG - Silver Grey	VG - Vegas Gold	W - White
-----------	-------------------	--------------	--------------------	-----------------	-----------------	-----------------	-------------	---------------	-------------	-----------	-------------	---------------	------------------	-----------------	-----------

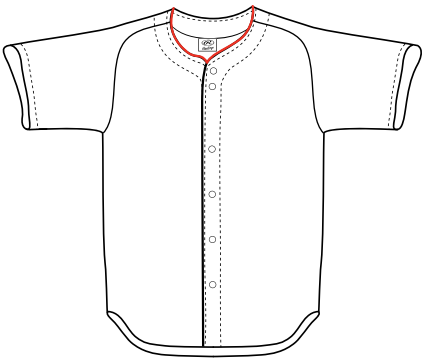
Color combinations not listed above (non-stock) require additional processing time.
1/8"–3/8" wide. Pattern 1, 3 or 6 only.

OP1



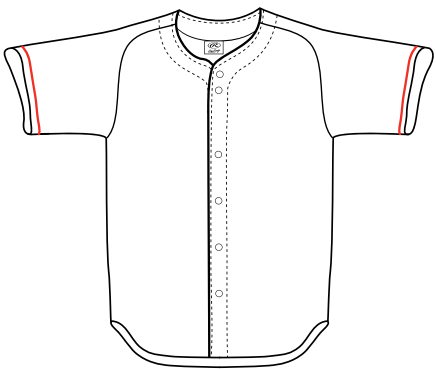
Braid Jersey (OP1)
1/8" or 3/8" around neck and down
front

OP2



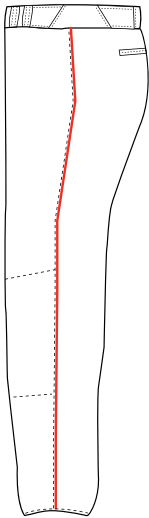
Braid Jersey (OP2)
1/8" or 3/8" around edge of
neck

OP3



Braid Jersey (OP3)
1/8" or 3/8" piping around sleeve ends

OP4



Piping/Braid
Down both side seams
of pant 1/8", 3/8"

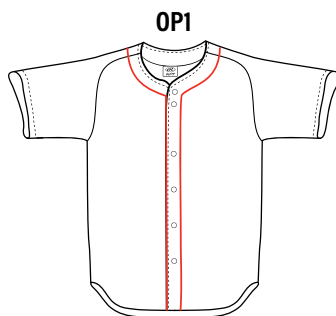
RIBKNIT™ COLOR CHART

VG	Vegas Gold
OG	Old Gold
PU	Purple
N	Navy
R	Royal
AF	A.F.A. Blue
CB	Columbia Blue
MB	Marlin Blue
AQ	Aqua
DG	Dark Green
K	Kelly Green
LT	Light Old Gold
LG	Light Gold
TO	Tennessee Orange
BO	Burnt Orange
TX	Texas Orange
S	Scarlet
C	Cardinal
LP	Light Pink
HP	Hot Pink
MA	Maroon
DB	Dark Brown
BG	Blue Grey
SG	Silver Grey
W	White
B	Black
GR	Graphite

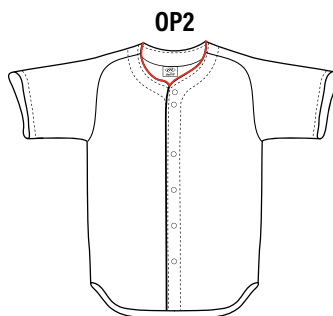
CUSTOM BRAIDS

STYLE	#1 SOLID	#2 2 COLORS	#3 2 OR 3 COLORS	#6 2 COLORS
TRIM WIDTH				
1/8"	1/8"			
3/8"	3/8"		1/8" 1/8" 1/8"	3/16" 3/16"
1/2"	1/2"	1/8" 1/4" 1/8"	1/6" 1/6" 1/6"	1/4" 1/4"
3/4"	3/4"		1/4" 1/4" 1/4"	3/8" 3/8"
1"	1"	1/4" 1/2" 1/4"	1/3" 1/3" 1/3"	1/2" 1/2"
1 1/2"	1 1/2"	3/8" 3/4" 3/8"	1/2" 1/2" 1/2"	3/4" 3/4"
2"	2"	1/2" 1" 1/2"	5/8" 5/8" 5/8"	1" 1"

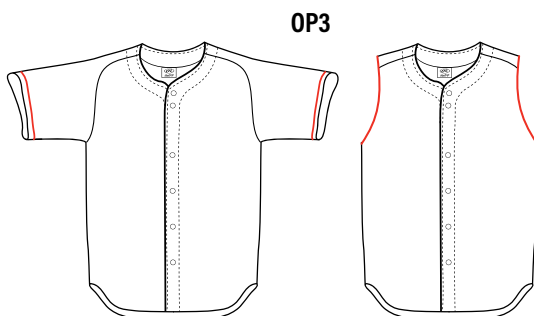
Custom braid may have longer lead times.
1/2", 3/4", 1", 1 1/2", 2" braid sizes not available
for TFWS decoration.
2" width only available for ribknit waist option.



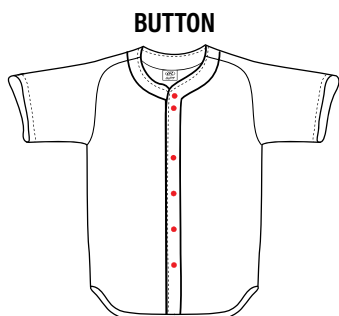
OP1
Piping/Braid around neck and down
front placket of full button jersey
 $\frac{1}{8}$ " , $\frac{3}{8}$ " , 1"
(CSTM)



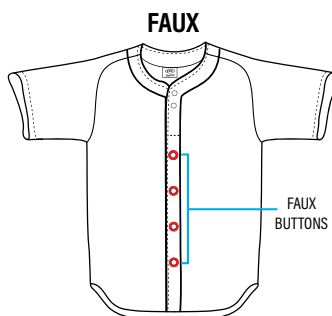
OP2
Piping/Braid around edge of neck
 $\frac{1}{8}$ " , $\frac{3}{8}$ "
(CSTM)



OP3
Piping/Braid around both sleeve ends
(edge of armhole for sleeveless styles)
 $\frac{1}{8}$ " , $\frac{3}{8}$ " , 1"
(CSTM)



BUTTON
Change button color
(CSTM only)



FAUX
Faux-button placket on
any full button jersey
(CSTM only)

OPTIONS

OP13 Attach American flag patch (2"x3")

EEL Extra length (custom only)

OS Oversize charge for 3XL and larger

CUSTOM ONLY

PSBBJ Sublimate body (jersey)

PSBS Sublimate sleeves (both sleeves)

PSBI Sublimate inserts (jersey)

PSBBP Sublimate body (pant)

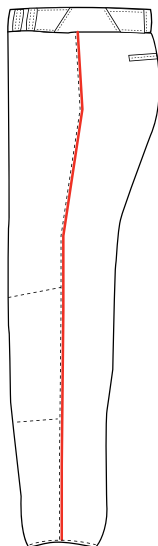
PSBIP Sublimate inserts (pant)

SBNP Sublimate nameplate

BRANDING: The Easton logo cannot be removed from Easton's garments.

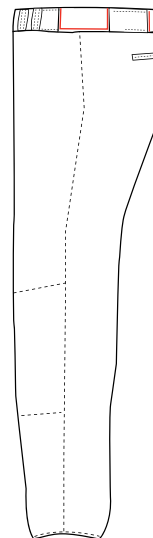
NAMEPLATES: (NAMEPLATE1) Full Block, Plain Block or special fonts available. Vertical Arch, Arc Text or Straight lettering configuration.

OP4



Piping/Braid down both side seams of pant
 $\frac{1}{8}"$, $\frac{3}{8}"$, $\frac{1}{2}"$, $\frac{3}{4}"$, $1"$, $1\frac{1}{2}"$

OP15

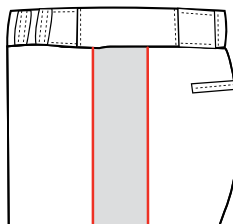


Piping/Braid around tunnel loops
(Custom only) $\frac{1}{8}"$, $\frac{3}{8}"$

Side Insert

OP4-2

Piping/Braid down front and back of optional side inserts



OPTIONS

OP5 Specify hemmed length for un-hemmed pants. Must be ordered in whole inches (stock only). Please specify with or without elastic

EEL Extra length (custom only)

BRANDING: The Easton logo cannot be removed from Easton's garments

WASHING GUIDE

WASH UNIFORMS PRIOR TO FIRST USE AND IMMEDIATELY AFTER EACH USE. Naturally occurring PH levels in sweat may cause dye migration in first use. We recommend a detergent like Tide® Plus Coldwater Clean. Prior to washing in cool water, turning the garments inside out will help preserve Twill, Vapor Fusion™, HS Fusion, and Embroidery. Claspings Velcro® prior to washing may help prevent snagging or picking.

DO NOT WASH UNIFORMS WITH OTHER ITEMS. Bleeding may occur.

DO NOT USE BLEACH. Bleach will deteriorate fabric fibers and may cause color loss.

DO NOT OVERLOAD WASHER OR DRYER. Hang dry is recommended for best results. In the dryer, overloading may cause the uniforms to stick together, especially those with HS Fusion. Remove garments immediately after both wash and dry cycles. To avoid static and lint build-up, use an anti-static agent such as Bounce® Dryer Sheets.

DO NOT EXPOSE UNIFORMS TO HIGH HEAT. Excessive heat is the enemy of your uniform. Heat presses, ironing, dry cleaning, or heat transfers may cause dye migration and break down fabric fibers. Excessive heat, especially in dryers, can cause shrinkage above normal tolerances, cause HS Fusion to crack, and Twill to wrinkle. If you use a dryer, please use a 'damp dry' or 'air dry' setting.

STORE IN A COOL, DRY AREA, AWAY FROM DIRECT SUNLIGHT.
Excessive sunlight may cause discoloration.

Heavily soiled garments (grass, dirt, clay mud), pre-treatment is recommended

- Spray on products such as Spray 'n Wash®, Shout®, or ESPRO® cleaner have been tested with positive results.
- Products such as Shout® Advanced Action Gel can be used for stubborn stains.
- For blood stains, it is best to rinse in cool water as soon as possible, and if necessary, soak in cool water before washing. One of the above pre-treatments can also be used, or an oxygen-based laundry booster such as OxiClean® can also be used.
- For ink stains, use hair spray as soon as possible. Delaying the application of hair spray may decrease results. Spray on stain and rub until the ink is gone. Wash as normal.

QUALITY GUARANTEE

1-year warranty starts from date of customer receipt of Easton® uniforms. Warranty covers any defect or condition of a uniform that can be attributed to a manufacturing error, or otherwise deemed to be a Easton® quality concern. This does not include damage or discoloration that may occur from excessive collisions or abrasions, customer alteration, improper care, or circumstances beyond Easton® control. Please use the above uniform care instructions for best results.

Our caring service representatives are standing by for your questions at 1-800-729-5464 (800-RAWLINGS).

MINIMUM ORDER POLICY

DESCRIPTION	OPTION
1 Custom Garment	MO1
2_5 Custom Garments	MO2-5
Stock fill in order less than \$75.00	MIN ORDER

These charges are in addition to the regular price per order and are suggested retail prices.

Fabric Offerings

FABRICS			CONTENT	WEIGHT	PROPERTIES	USE
PRO	140		88% polyester 12% spandex	280g	Circular Knit Moisture Management	Pants Jerseys
COLLEGIATE	150		100% polyester	300g	Circular Knit Moisture Management	Pants Jerseys
	247		92% polyester 8% spandex	240g	Pointelle Stretch Mesh	Jerseys
	74		95% polyester 5% spandex	235g	WHILE SUPPLIES LAST	Jerseys
TRAVEL BALL	126		100% polyester	165g	Lightweight Flatback Mesh	Jerseys
	170		100% polyester	195g	AVAILABLE FALL 2022 Textured Knit	Jerseys

Sizing

WOMEN'S JERSEYS

WOMEN'S	BUST	WAIST	GIRL'S	BUST	WAIST
SMALL	34_36	30_32	SMALL	24_26	21_23
MEDIUM	37_39	33_35	MEDIUM	27_29	24_26
LARGE	40_42	36_38	LARGE	30_32	27_29
XL	43_45	39_41	XL	33_35	30_32
XXL	46_49	42_44			

WOMEN'S PANTS

WOMEN'S	WAIST	HIPS	INSEAM	GIRL'S	WAIST	HIPS	INSEAM
SMALL	25_27	32_34	21½"	SMALL	18_20	26_28	14½"
MEDIUM	28_30	35_37	22"	MEDIUM	21_23	29_30	16"
LARGE	31_33	38_40	22½"	LARGE	24_26	31_32	18"
XL	34_36	41_43	23"	XL	27_29	33_34	19½"
XXL	37_39	44_46	23½"				

Vaporfusion™ Color Offering:

B	W	PT	GC	SG	BG	GR	DSW	DB	MA	C	HP	LP	TR	S	TX	BO	TO	AG	CMB	CMT	CMG	OG	VG	LT	LG	YWL	LIME	FLG	K	DG	TE	AQ	MB	FLB	CB	CAB	AF	R	N	MN	PU
Black	White	Pure	Glans Cream	Silver Grey	Blue Grey	Graphite	Dark Shadow	Dark Brown	Maroon	Cardinal	Hot Pink	Light Pink	True Red	Scarlet	Texas Orange	Burnt Orange	Tennessee Orange	Army Green	Camo Brown	Camo Tan	Camo Green	Old Gold	Vegas Gold	Light Old Gold	Light Gold	Yellow	Lime Green	Fluorescent Green	Kelly Green	Dark Green	Teal	Aqua	Marin Blue	Fluorescent Blue	Columbia Blue	Carolina Blue	A.F.A. Blue	Royal	Navy	Midnight Navy	Purple

Special thanks to Katherine Strohlein, Jason Ware Photography, Kingery Printing, Kenny Nguyen and Jonathan DeClaro for the production, photography and printing of this catalog.

Bat images in this catalog are computer-generated and are not photographs of the actual, final product. Actual product for some models may differ from these images. All bat weights listed are approximations only. Actual bat weights will vary depending on a variety of factors, including grip weight, final bat design, length and testing and manufacturing variability.

Easton Diamond Sports LLC. reserves the right to substitute alternate Easton Logo design on some products based on availability.

Easton, the "Screamin' E" design and the "Screamin' E" design together with Easton are registered trademarks of Easton Diamond Sports, LLC., 3500 Willow Lane Thousand Oaks, CA 91361. All rights reserved.

© 2022 Easton Diamond Sports, LLC, All Rights Reserved.

Non-Easton Marks (Non-Easton trademarks are the property of their respective owners):
LITTLE LEAGUE is a registered trademark of Little League Baseball, Incorporated.
The GHOST trademark is owned by Taylor Made Golf Company, Inc. and is used under license.
Lycra® is a registered trademark of Invista North America S.A.R.L.
Scotchgard® is a registered trademark of 3M Company.



NOTES



SALES FORCE

CORPORATE HEADQUARTERS

RAWLINGS

510 Maryville University Drive
Suite 110
St. Louis, MO 63141 USA
Toll Free 800.RAWLINGS
Toll Free Fax 800.468.7767
314.819.2800

EASTON

3500 Willow Lane
Thousand Oaks, CA 91361 USA
Toll Free 800.6EASTON
Toll Free Fax 800.800.8734
805.953.4800

TEAM SALES

DIEBOLD, BOB

SENIOR VP, GLOBAL SALES
510 Maryville University Drive
Suite 110
St. Louis, MO 63141
bdiebold@rawlings.com

BRACCI, DAVE

NATIONAL DIRECTOR OF TEAM SALES

2533 South Coast Highway 101
Suite 223
Cardiff, CA 92007
760.943.0837
760.420.8809
dbracci@rawlings.com

CENTRAL-EAST REGION

CZERWIEN, CHRIS

SALES DIRECTOR

CENTRAL-EAST

1617 Fair Oak Drive
Rochester Hills, MI 48309
248.608.1275
248.608.1276 Fax
cczerwien@rawlings.com

BIEG, DAN

4608 Langtree Drive
Sappington, MO 63128
314.608.4387 Cell
dbieg@rawlings.com
EASTERN MO, SOUTHERN IL

BRINKMAN, JEFF

1915 Sweet Cider Road
Fort Wayne, IN 46818
419.388.9390
260.490.9697 Fax option
jbrinkman@rawlings.com
MI, NORTHERN IN,
NORTHWESTERN OH

HENKE, ADAM

8643 Tahoe Dr
Macedonia, OH 44056
618.691.9819
ahenke@rawlings.com
NORTHEAST/CENTRAL OH,
WESTERN PA, NORTHEASTERN
WV, WESTERN NY

MARANO, TONY

500 Eagle Nest Drive
Camden, DE 19934
302.983.4865
tmarano@rawlings.com
DE, SOUTHERN NJ, VA

MAUCHAN, JON

314 West 5th
West Islip, NY 11795
631.903.3376
631.669.0307 Fax option
jmauchan@rawlings.com
BROOKLYN, LONG ISLAND,
NORTHERN NJ

MURRAY, BILL

9839 Log House Court
Gaithersburg, MD 20882
301.536.0250
301.515.0625 Fax
bmurray@rawlings.com
MD, EASTERN PA

NICKELL, J.W.

232 Bartholomew Boulevard
Jeffersonville, IN 47130
502.645.0532
jnickell@rawlings.com
KY, SOUTHERN IN,
SOUTHWESTERN OH,
SOUTHWESTERN WV

SAHLI, COLIN

5067 N Lincoln Avenue #402
Chicago, IL 60625
630.291.9484
csahli@rawlings.com
NORTHERN IL, NORTHWEST IN,
SOUTHERN WI

SMITH, CARTER

90 Windermere Village Rd
Ellington, CT 06029
314.800.8049
csmith@rawlings.com
CT, RI, UPSTATE NY

SUTTON, STEVE

48 Big Wood Drive
Westfield, MA 01085
413.537.5439
ssutton@rawlings.com
MA, ME, NH, VT

WEST REGION

FAHRNEY, DAVE

SALES DIRECTOR WEST

503 Burns Circle
San Ramon, CA 94583
925.519.5814
dfahrney@rawlings.com
GUAM, HI

BEREAUD, NIC

3500 Willow Ln
Thousand Oaks, CA 91361
619.384.7878
nbereaud@rawlings.com
SOUTHERN CA, AZ

DUNN, JUSTIN

2804 NE Parkview Court
Lee's Summit, MO 64086
913.485.0605
jdunn@rawlings.com
WESTERN MO, IA, KS, NE,
NORTHEAST OK, NORTHWEST AR

HOFFMAN, NATE

7471 South Clinton Street #2531
Englewood, CO 80112
719.649.9990
nhoffman@rawlings.com
CO, UT, NM, WY

JEFFS, RAY

13710 NW 49th Avenue
Vancouver, WA 98685
518.683.8080
rjeffs@rawlings.com
AK, ID, MT, OR, WA

PHELPS, DAN

1206 Benton Street
Anoka, MN 55303
763.754.3906 Fax option
dphelps@rawlings.com
MN, ND, SD, NORTHERN WI

STEPHENS, ERIC

1126 Polson Circle
Martinez, CA 94553
626.824.4380
estephens@rawlings.com
NORTHERN CA, NORTHERN NV

WECKERLE, STEVE

714 Via Nublado
San Clemente, CA 92672
949.275.0727
sweckerle@rawlings.com
ORANGE COUNTY CA, SAN DIEGO
COUNTY CA, SOUTHERN NV

SOUTH REGION

RODRIGUEZ, BRADY

SALES DIRECTOR SOUTH

404 East Redbud Drive
Slidell, LA 70458
985.718.7075
brodriguez@rawlings.com

BENNETT, BOBBY

217 Wilshire Terrace
White, GA 30184
770.490.7912
bbennett@rawlings.com
GA, EASTERN TN

BOWMAN, TIM

12304 Pepperidge Avenue
Denton, TX 76207
214.850.1510
940.240.9770 Fax option
tbowman@rawlings.com
CENTRAL AND WESTERN OK,
CENTRAL AND NORTHERN TX

DOMINGUEZ, CHRISTIAN

4731 SW 99th Ct
Miami, FL 33165
309.620.4241
cdominguez@rawlings.com
FL

PAYTES, NORMAN

1500 Ashley Creek Drive
Matthews, NC 28105
704.321.7940
npaytes@rawlings.com
NC, SC, SOUTHWESTERN VA

RENFROE, DAVID

861 Arundell St
Tuscaloosa, AL 35406
662.934.6654
drenfro@rawlings.com
AL, EASTERN AR, FL PANHANDLE,
MS, WESTERN TN

WHITE, CHARLIE

1258 W 23rd
Houston, TX 77008
630.251.6778
cwhite@rawlings.com
LA, WESTERN AND SOUTHERN TX

INTERNATIONAL SALES

ROBERT, RALPH

DIRECTOR OF

INTERNATIONAL SALES

510 Maryville University Drive
Suite 110
St. Louis, MO 63141 USA
314.819.2813
314.819.2990 Fax
rrobert@rawlings.com

CANADA HEAD OFFICE

BEATTY, RANDY

GENERAL MANAGER

131 Savannah Oaks Drive
Brantford, Ontario N3V 1E8
519.750.1380 x2610
rbeatty@rawlings.com

SHIPLEY, JASON

BUSINESS UNIT DIRECTOR

519.750.1380 x2625
jshipley@rawlings.com

ROBINSON, ERIC

NATIONAL ACCOUNT

SALES MANAGER

226.387.1923
erobinson@rawlings.com

SARRAZIN, KIM

TEAM SALES MANAGER

514.606.8172
ksarrazin@rawlings.com

BROCK, DEBBIE

SALES/OPERATIONS MANAGER

519.750.1380 x2612
dbrock@rawlings.com

BRITISH COLUMBIA

SHADOW AGENCY

ROB HAYEUR

604.275.7734
rhayeur@shadowagency.ca
MATT WELSH
604.828.1986
mwelsh@shadowagency.ca

NORTHERN ALBERTA

SPARROW OUTFITTERS

SCOTT STEVENSON

780.913.7382
sparrowoutfitters@icloud.com

SOUTHERN ALBERTA

MCNEIL SPORTS AGENCY

ASHLEY MCNEIL

403.970.7492
mcneilashley@icloud.com

ONTARIO LAKEHEAD, MANITOBA, SASKATCHEWAN

H&W RECREATIONAL MARKET- ING

BRENT HOBDAV

204.444.3909
bhobday@highspeedcrow.ca

SOUTHWESTERN ONTARIO

BIG RED SPORTS AGENCY

JONAH EVANS

226.583.1934
jevans@bigredsports.com

CENTRAL AND NORTHEASTERN ONTARIO

RABJOHN SPORTS

JASON RABJOHN

416.898.7389
jrabjohnsports@gmail.com

WESTERN QUEBEC (INCLUDING OTTAWA VALLEY)

DMB SPORTS

MARTIN BLANCHET

514.771.4874
martin.blanchet@dmbsport.ca

EASTERN QUEBEC

AGENCE SPORT AXION

BRIAN MASSIE/JOSUE PELEY

418.956.6277
agencebrianmassie@gmail.com
jpeley@sportaxion.ca

ATLANTIC CANADA

DOUCETTE SPORTS AGENCY

KEVIN DOUCETTE

506.384.7453
dsagency@nbnet.nb.ca

B2B.EASTON.COM

PLACE & CHECK ORDERS • ITEM INFORMATION • IMAGES • LINK TO CUSTOM PRODUCTS



@EASTONBASEBALL
@EASTONFASTPITCH
@EASTON SLOWPITCH

TAG US AND USE #POWEREDBYEASTON



@EASTONSPORTSNETWORK

FUELED BY PASSION, DESIGNED TO WIN.



EASTON DIAMOND SPORTS, LLC.

3500 WILLOW LANE, THOUSAND OAKS, CA 91361
P: 805.953.4800 • 800.6EASTON • F: 800.8008734

EASTON.COM



@EASTONBASEBALL

@EASTONFASTPITCH

@EASTONSLWPITCH



@EASTONSPORTSNETWORK