

2023
FALL COLLECTION





RAWLINGS REGISTERED TRADEMARKS

Oval R®, Pro Dri®, Pro Preferred®, and Rawlings®.

RAWLINGS TRADEMARKS

C3™, C2D™, C3D™, Contour™, Crossover™, EDGE™, EDGE Comp™, Force™, IsoFit™, IsoFlex™, Pro5™, Pro Dri Plus™, Pro Twill™, Pulse™, R2™, R-Grip™, Reign™, Shooter's Seam™, Soft Touch Technology™, ST5™, VaporFusion™, ZoneFit™, and ZoneFlex™.

TRADEMARKS

AAU® is a registered trademark of Amateur Athletic Union®; CIF™ is a trademark of the California Interscholastic Federation; Horween® is a registered trademark of Horween Leather Company®; IESA™ is a trademark of the Illinois Elementary School Association; KHSAA™ is a trademark of the Kentucky High School Athletic Association; LYCRA® is a registered trademark of Dupont®; MHSAA® is a registered trademark of the Michigan High School Athletic Association; NCAA® is a registered trademark of the National Collegiate Athletic Association®; NFHS® is a trademark of the National Federation of State High School Associations™; NJCAA® is a registered trademark of the National Junior Collegiate Athletic Association; NOCSAE® is a registered trademark of The National Operating Committee on Standards for Athletic Equipment; OxiClean™ is a trademark of Church & Dwight Co., Inc. ("C&D"); PIAA® is a registered trademark of the Pennsylvania Interscholastic Athletic Association, Inc.; PORON® XRD™ is a registered trademark of the Rogers Corporation; SCHSL™ is a trademark of the South Carolina High School League; Shout® is a registered trademark of S.C. Johnson & Son, Inc.; Tide® is a registered trademark of Procter & Gamble; Velcro® is a registered trademark of Velcro Industries B.V.®

INFLATABLES

FOOTBALL.....	2
BASKETBALL.....	4

APPAREL

GOLD COLLECTION.....	6
TRAINING.....	8
STOCK.....	15
CUSTOM APPAREL.....	17
POWER MESH.....	21
SPEED MESH.....	31
REVERSIBLE.....	35
FLAG FOOTBALL.....	36
DYO FOOTBALL JERSEY EXAMPLES.....	37

APPAREL OPTIONS

39

CONTACTS

TELEPHONE

Rawlings Apparel

1-888-859-0111

FAX

Custom Clothing Only

1-866-328-5872

All Stock Clothing including Lettering or Options

1-888-859-5111

©2022 Rawlings Sporting Goods Company, Inc.

510 Maryville University Dr. Suite 110, St. Louis, MO 63141

Team names, logos and colors shown throughout this catalog are for demonstration

purposes only and are not meant to identify any affiliation with Rawlings Sporting Goods Company.



ST5™

NFHS®

ST5AB

OFFICIAL SIZE

• Meets NFHS® and NCAA® Specifications

CASE PACK: 12

The Rawlings™ ST5™ football has all the features of a classic Rawlings game ball. Starting with its deep-pebbled, center-cut Horween® leather with an enhanced tack formulation and Rawlings proven Soft Touch Technology™ the enhanced ST5™ ball also features our re-engineered Aerial™ design to offer the smallest allowable pattern.



PRO5™

NFHS®

PRO5AB

OFFICIAL SIZE

• Meets NFHS® and NCAA® specifications

CASE PACK: 12

The PRO5™ football is a classic pro-style ball. Built using deep-pebbled, center-cut Horween® leather with an enhanced tack formulation, the PRO5 ball also features Rawlings' re-engineered Aerial™ pattern to offer the smallest allowable pattern in a pro construction for a traditional feel.



R2™ COMP™

R2CFB-B

OFFICIAL SIZE

• Meets NFHS® and NCAA® specifications

CASE PACK: 12

R2CFB-J-B

JUNIOR SIZE

• Ages 9-12

CASE PACK: 12

R2CFB-Y-B

YOUTH SIZE

• Ages 12-14

CASE PACK: 12

R2CFB-PWB

PEE WEE SIZE

• Ages 6-9

CASE PACK: 12

The R2™ composite football will change your expectation of how a composite football should perform. Our exclusive clutch composite design cover material offers superior grip and unmatched durability allowing you to make the game breaking play all season long. With our stitched stripe construction, the R2™ composite football is the only ball with the same material on the entirety of the ball, allowing superior grip wherever you grab the ball. Adding the R-Grip™ rubberized lace and our Aerial™ pattern makes the R2™ composite football the best performing synthetic football on the market.



EDGE[™]
COMP



NFHS®
EDGECOMPB
OFFICIAL SIZE
• Meets NFHS® specifications

CASE PACK: 12 **EDGEJCB**
JUNIOR SIZE
• Ages 9-12

CASE PACK: 12

EDGE CYB
YOUTH SIZE
• Ages 12-14

CASE PACK: 12 **EDGECPWB**
PEE WEE SIZE
• Ages 6-9

CASE PACK: 12

**PICK FROM ANY OF OUR LEATHER BALLS AND
WE'LL CUSTOMIZE IT WITH THE LOGO OF YOUR CHOICE.**

CUSTOM FOOTBALL PROGRAM DETAILS

- Minimum 6 footballs per order
- Lead time: 3-4 weeks
- One-time set up fee applies to custom logos
- Stock lettering will be plain block, all capitals



CUSTOM LASER LOGO



CUSTOM LASER LETTERING LOGO

STOCK LOGOS OFFERED



Bulldog 1



Cardinal 2



Longhorn 2



Panther 1



Pirate 3



Paw 15

AUTOGRAPH FOOTBALLS

RAB2B CASE PACK: 6
OFFICIAL SIZE AUTOGRAPH FOOTBALL
• Composite leather autograph football
• 3 white panels for autographs



CUSTOMIZE WITH
YOUR TEAM NAME
AND/OR LOGO

CUSTOM AUTOGRAPH FOOTBALL PROGRAM DETAILS

- Available in 1 or 2 colors
- Lead time: 4-6 weeks
- One-time set up fee applies to custom logos
- Minimum 24 balls per order for custom logos

1-COLOR LOGO



1-COLOR TYPE



2-COLOR LOGO



2-COLOR TYPE



**CONTACT YOUR LOCAL RAWLINGS SALESMAN OR
AUTHORIZED RAWLINGS DEALER FOR MORE INFORMATION**



**RAWLINGS IS PROUD TO BE
THE OFFICIAL BASKETBALL OF**



CONTOUR-B

- High-end ultra-tack composite cover for excellent grip
- Deep skived channels for maximum control
- Durable raised pebble embossed logos
- Indoor use only
- Meets NCAA® and NFHS® specifications for game use

MODEL	SIZE	PACK
CONTOUR-B	Official Size 7 (29 1/2")	Bulk
CONTOURW-B	Intermediate Size 6 (28 1/2")	Bulk



CROSSOVER

COMPOSITE BASKETBALL

- Performance-level PU composite leather cover
- Deep skived channels for maximum grip
- Embossed logos
- Indoor/outdoor

MODEL	SIZE	PACK
CROSS8B	Official Size 7 (29 1/2")	Bulk
CROSSW8B	Intermediate Size 6 (28 1/2")	Bulk



RPABB

AUTOGRAPH BASKETBALL

- Composite leather cover
- Four white panels for autographs

MODEL	SIZE	PACK
RPABB	Official Size 7 (29 1/2")	Bulk



CUSTOMIZE WITH
 YOUR TEAM NAME
 AND/OR LOGO

CUSTOM AUTOGRAPH BASKETBALL PROGRAM DETAILS

- Available in 1 or 2 colors
- Lead time: 4-6 weeks
- One-time set up fee applies to custom logos
- Minimum 24 balls per order for custom logos

1-COLOR LOGO



1-COLOR TYPE



2-COLOR LOGO



2-COLOR TYPE



**CONTACT YOUR LOCAL RAWLINGS SALESMAN
 OR AUTHORIZED RAWLINGS DEALER
 FOR MORE INFORMATION**



The Rawlings Gold Patch is timeless and iconic in the sport of baseball for good reason. For more than 60 years, it's represented authentic performance that goes above and beyond the game's standard. The new Rawlings Gold Collection was created for the latest generation of "the Finest in the Field™" and features quality fabrics, premium materials and superior fit and athletic function, all worthy of the highly-coveted Rawlings Gold Patch. It's time for a new gold standard [that you can wear] – the Rawlings Gold Collection has arrived.



GCMW2

GOLD COLLECTION MID WEIGHT JACKET

- Athletic fit with drop-tail hem
- Stretch sleeves and inserts for optimal mobility
- Knit-faced soft shell with textured fleece back for extra warmth
- Water repellent finish
- Zippered hand pockets
- Men's sizes: S-3XL

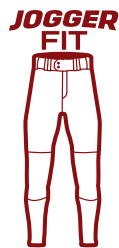




GCJJ

GOLD COLLECTION SHORT SLEEVE HOODIE

- Athletic fit with drop-tail hem
- Fitted hood
- Cotton-blend fabric for maximum comfort
- Quarter-zip placket
- Kangaroo pocket with welded zippers
- Men's sizes: S-3XL



GCJOG

GOLD COLLECTION JOGGER STYLE PANT

- Athletic jogger fit
- Cotton-blend fabric for maximum comfort
- Faux fly front
- Roomy pockets with welded zippers
- Men's sizes: S-XXL





UDFP4/YUDFP4

DUGOUT FLEECE PULLOVER

- Body: 100% polyester with 2-way stretch
- 2-tone design with gray waffle pattern accents
- Contrast stitching
- Men's sizes: S-3XL
- Youth sizes: S-XL



PFH2/YPFH2

PERFORMANCE FLEECE PULLOVER

- Heather body; 100% polyester brushed performance fleece
- V-cut neckline
- Expandable polyester/spandex sleeve gusset
- Zippered valuables/phone pocket
- Side vents at hem line
- Men's sizes: S-3XL
- Youth sizes S-XL





**CLASSIC
FIT**



FINAL YEAR



RHTYO

SHORT SLEEVE HOODIE

- Quarter-zip short sleeve hoodie with drawcord
- 100% polyester fleece
- Self-fabric bottom hem
- Kangaroo front and zipper chest pockets
- Men's sizes: S-3XL

B

DSW



**ATHLETIC
FIT**



CSP

COLORSYNC POLO

- Athletic fit with vented hem
- Designed to be worn tucked or untucked
- Cross-dyed performance fabric
- Self-fabric collar
- Men's sizes: S-3XL

BG/B

BG/GR

BG/N

BG/R

BG/S



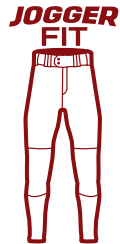


NEW

CSTECH

COLORSYNC HALF ZIP FLEECE PULLOVER

- 95% polyester/5% Spandex tech fleece
- Half zip with reflective zipper insert
- Raglan sleeve
- Moisture wicking technology
- Men's sizes: S-3XL



NEW

CSJOG

COLORSYNC TRAINING JOGGER STYLE PANT

- Athletic jogger fit
- Polyester/Spandex Stretch woven fabric
- Front pockets
- Elastic waistband with drawcord
- Men's sizes: S-3XL





CSLSJ/YCSLSJ
COLORSYNC LONG SLEEVE JACKET

- Athletic fit
- Textured stretch woven fabric
- Wicking technology
- Fitted hood
- Zippered pockets
- Men's sizes: S-3XL
- Youth sizes: S-XL



CSSSJ/YCSSSJ
COLORSYNC JACKET

- Athletic fit
- Stretch woven fabric
- Flatback mesh inserts
- Fitted hood
- Kangaroo pocket
- Men's sizes: S-3XL
- Youth sizes: S-XL





NEW

CSSSJ2
COLORSYNC SHORT SLEEVE JACKET

- Athletic fit
- Textured stretch woven fabric
- Wicking technology
- Zippered pockets
- Men's sizes: S-3XL
- Youth sizes: S-XL



CSTS/YCSTS
COLORSYNC TECHNICAL SHORT

- Athletic fit
- 7" inseam (adult)/5" inseam (youth)
- Stretch woven fabric
- Zippered pockets
- Men's sizes: S-3XL
- Youth sizes: S-XL





HLWH/YHLWH

HURLER LIGHTWEIGHT HOODIE

- Graphite body: Pro Dri® 90% polyester/10% spandex jersey
- Pro Dri® fabric wicks sweat away from your skin
- Contrasting raglan sleeves, hood trim and stitching
- Elongated cuffs with thumb holes
- Men's sizes: S-3XL
- Youth sizes: S-XL
- Youth colors: GR/B, GR/DSW, GR/N



NEW

RTT34/YRTT34

¾ SLEEVE PERFORMANCE JERSEY

- 100% polyester performance wicking fabric
- ¾ baseball style raglan sleeve
- Athletic fit
- Rawlings branding on back yoke
- Men's sizes: S-3XL
- Youth sizes: S-XL





RTT/YRTT

CREW NECK SHORT SLEEVE JERSEY

- Short-sleeve, crew neck performance jersey with raglan sleeves
- Body: Pro Dri® 100% polyester interlock
- Inserts: Pro Dri® polyester pin-dot mesh
- Men's sizes: S-3XL
- Youth sizes: S-XL



FINAL YEAR

LSRT/YLSRT

CREW NECK LONG SLEEVE JERSEY

- Long-sleeve, crew neck performance jersey with raglan sleeves
- Body: Pro Dri® 100% polyester interlock
- Inserts: Pro Dri® polyester pin-dot mesh
- Men's sizes: S-3XL
- Youth sizes: S-XL





**DEALER
DECORATION
ONLY**

LEAN/PRO

FJPR1/YFJPR1

PREMIUM PRO-CUT PRACTICE JERSEY

- Lean fit body
- Elastic cuff
- 2-Ply cowl
- Belt length
- 100% polyester
- Mechanical stretch porthole mesh body
- Back U-Notch
- Adult sizes: S-3XL
- Youth sizes: S-XL



** Burnt Orange, Dark Green, Light Gold, Maroon, Purple, and Vegas Gold are While Supplies Last*



FP147/YFP147

147 HIGH-PERFORMANCE GAME PANT

- 88% Nylon/12% Spandex; Pro Dri® (147)
- Matte finish
- 2 1/2" Heavyweight R-Grip® silicon waistband
- Concealed slot waistband for hip and tail pads
- Shift prevention mesh pockets for thigh and knee pads
- No-fly flared front and back duke
- Adult sizes: XS-3XL
- Youth sizes: XS-XL



** Dark Green, Light Gold, Purple, and Vegas Gold are While Supplies Last*



**PADS
BUILT IN**

FPL/YFPL

POLY/SPAN LIGHT INTEGRATED GAME PANT

- Game pant with 7 all-in-one built-in pads
- Ergonomic padding design
- Significantly lighter than most competitor integrated pants
- 92% Polyester/8% Spandex (matte finish)
- No fly duke
- Built-in belt, hip, spine, thigh, and knee pads
- Machine washable
- Adult sizes: XS-3XL
- Youth sizes: XS-2XL



** Dark Green, Graphite, and Vegas Gold are While Supplies Last*

**PADS
BUILT IN**



FPPI/YFPPI

POLY INTEGRATED PANT

- Stock adult and youth game/practice pant with built-in pads
- Body: 100% polyester
- Built-in belt, hip, spine, thigh, and knee pads
- Machine washable
- Adult sizes: XS-3XL
- Youth sizes: XS-2XL



POWER MESH
STARTING ON
PAGE 21



SPEED MESH
PAGE 31



REVERSIBLE
PAGE 35



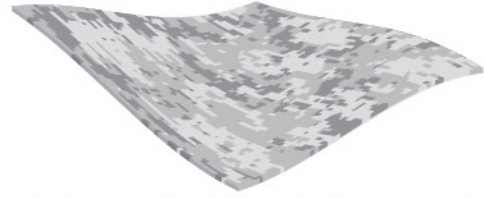
Outside

Inside



VAPOR FUSION™

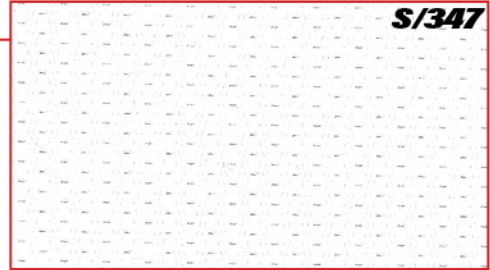
- Lightweight performance sublimation
- Permanently bonded colors



(Sublimation) Dye is transferred between a medium and permanently bonded to fabric colors

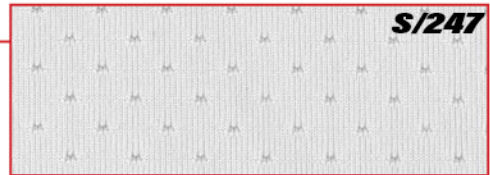
POWER MESH

- Wicking
- Stain Release
- 4 way stretch
- No Grab
- Abrasion resistant



SPEED MESH

- 4 way stretch
- Abrasion resistant
- Wicking



REVERSIBLE

- Wicking
- 4 way stretch
- Abrasion resistant



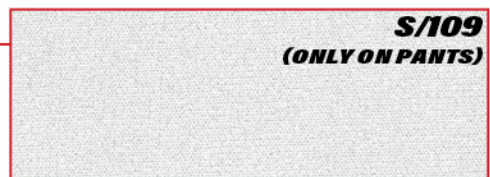
STRETCH MOCK WOVEN

- 4 way stretch
- No Grab
- Abrasion resistant



DAZZLE

- Wicking
- 4 way stretch
- No Grab
- Abrasion resistant



LIGHTWEIGHT INTERLOCK

- Wicking
- Stain Release
- 4 way stretch





FABRIC OFFERINGS

FABRICS			CONTENT	WEIGHT	PROPERTIES	USE
VARSITY	S/347		89% polyester 11% spandex	309g	Wicking Stain Release	Jerseys
	S/147		83% polyester 17% spandex	309g		Pants
SPEEDMESH	S/247		92% polyester 8% spandex	235g	Wicking	Jerseys
REVERSIBLE	S/287		100% polyester	297g	Wicking	Jerseys
RECREATIONAL	S/109		90% polyester 10% spandex	238g	Wicking	Pants
VARSITY	S/47		89% polyester 11% spandex	271g	WHILE SUPPLIES LAST	Pant Inserts

SIZING

MEN'S SIZING

JERSEY SIZE	S	M	L	XL	2XL	3XL	4XL	5XL
Chest in inches	36	40	44	48	52	56	60	64
PANT SIZE	S	M	L	XL	2XL	3XL	4XL	5XL
Waist in inches	28	32	36	40	44	48	52	56

YOUTH SIZING

JERSEY SIZE	S	M	L	XL	2XL
Chest in inches	27	31	35	39	43
PANT SIZE	S	M	L	XL	2XL
Waist in inches	23	25	27	29	31



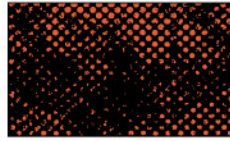
SUBLIMATED INSERT/NUMBER DESIGNS



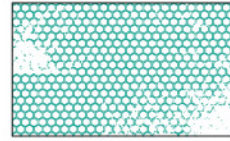
AUTO CAMO



AUTO DIGITAL CAMO



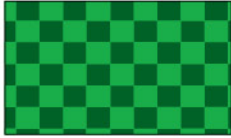
BUSTED DOTS



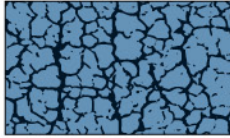
BUSTED HONEYCOMB



CAMO



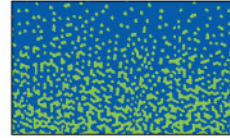
CHECK



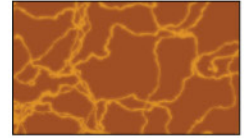
CRACKLE



DIGITAL CAMO



DIGITAL FADE



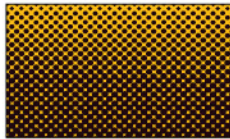
ELECTRIC



FADE



FLANNEL



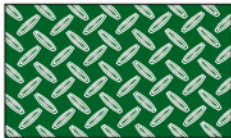
GRADIENT DOTS



HEATHER



HOUNDS TOOTH



PLATED



PRO STRIPE



SCRATCH



SHUTTER



SOLID



SPLAT



SPLIT



TRIAD STRIPE



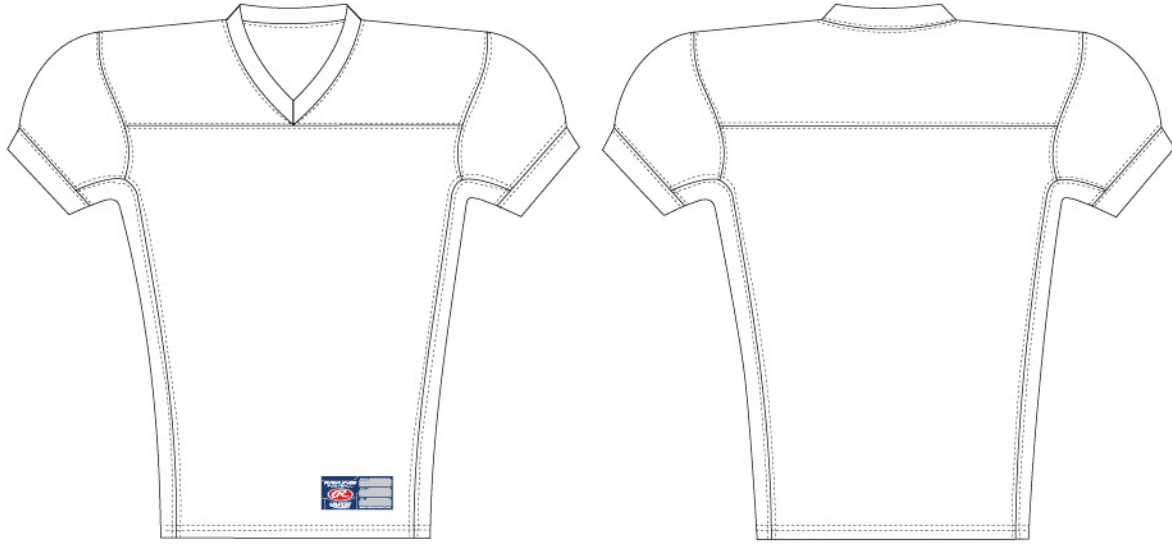
ZEBRA DOTS

VAPORFUSION™ COLOR OFFERING:

B	W	GC	PT	SG	BG	GR	DSW	DB	MA	C	HP	LP	TR	S	TX	BO	TO	MG	CMB	CMT	CMG	OG	VG	LT	LG	YLW	LIME	FLG	K	DG	TE	AQ	MB	FLB	CB	CAB	AF	R	N	MN	PU
Black	White	Giants Cream	Puffy	Silver Grey	Blue Grey	Graphite	Dark Shadow	Dark Brown	Maroon	Cardinal	Hot Pink	Light Pink	True Red	Scarlet	Texas Orange	Burnt Orange	Tennessee Orange	Military Green	Camo Brown	Camo Tan	Camo Green	Old Gold	Vegas Gold	Light Old Gold	Light Gold	Yellow	Lime Green	Flourescent Green	Kelly Green	Dark Green	Teal	Aqua	Marlin Blue	Flourescent Blue	Columbia Blue	Carolina Blue	A.F.A. Blue	Royal	Navy	Midnight Navy	Purple



GLJ905547VF



FEATURES:

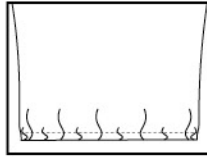
- Power Mesh sublimated compression jersey full length
- Adult Sizes: S - 5XL

FABRICS:

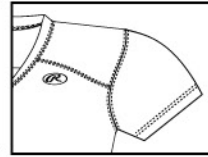


S/347

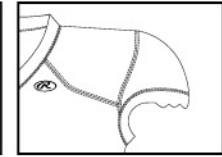
OPTIONS:



NO TUCK



NFSL



CLSU



VAPORFUSION™ COLOR OFFERING:

B	W	GC	PT	SG	BG	GR	DSW	DB	MA	C	HP	LP	TR	S	TX	BO	TO	MG	CMB	CMT	CMG	OG	VG	LT	LG	YLW	LIME	FLG	K	DG	TE	AQ	MB	FLB	CB	CAB	AF	R	N	MN	PU
Black	White	Giants Cream	Putty	Silver Grey	Blue Grey	Graphite	Dark Shadow	Dark Brown	Maroon	Cardinal	Hot Pink	Light Pink	True Red	Scarlet	Texas Orange	Burnt Orange	Tennessee Orange	Military Green	Camo Brown	Camo Tan	Camo Green	Old Gold	Vegas Gold	Light Old Gold	Light Gold	Yellow	Lime Green	Flourescent Green	Kelly Green	Dark green	Teal	Aqua	Marlin Blue	Flourescent Blue	Columbia Blue	Carolina Blue	A.F.A. Blue	Royal	Navy	Midnight Navy	Purple

DESIGN AT MYLOCKER.RAWLINGS.COM



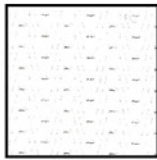
PJ47VF/YPJ47VF



FEATURES:

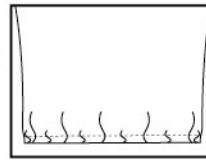
- Power Mesh sublimated compression jersey
- Adult Sizes: XS - 5XL
- Youth Sizes: XS - 2XL

FABRICS:

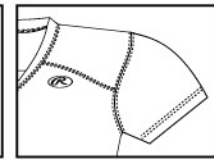


S/347

OPTIONS:



NO TUCK



NFSL



VAPORFUSION™ COLOR OFFERING:

B	W	GC	PT	SG	BG	GR	DSW	DB	MA	C	HP	LP	TR	S	TX	BO	TO	MG	CMB	CMT	CMG	OG	VG	LT	LG	YLW	LIME	FLG	K	DG	TE	AQ	MB	FLB	CB	CAB	AF	R	N	MN	PU
Black	White	Giants Cream	Putty	Silver Grey	Blue Grey	Graphite	Dark Shadow	Dark Brown	Maroon	Cardinal	Hot Pink	Light Pink	True Red	Scarlet	Texas Orange	Burnt Orange	Tennessee Orange	Military Green	Camo Brown	Camo Tan	Camo Green	Old Gold	Vegas Gold	Light Old Gold	Light Gold	Yellow	Lime Green	Flourescent Green	Kelly Green	Dark green	Teal	Aqua	Marin Blue	Flourescent Blue	Columbia Blue	Carolina Blue	A.F.A. Blue	Royal	Navy	Midnight Navy	Purple

DESIGN AT MYLOCKER.RAWLINGS.COM



CUSTOM UNIFORMS
POWER MESH - PJ47VF/YPJ47VF



9



10



C



D



E



AGGIE



WINGBACK



FLAG



CHECK



CHECK 0.5



ELECTRIC



CAMO



DIGICAMO



FADE



SOLID



OHIO



BEARCAT



STREAK



PREDATOR



DIGITAL FADE



ZEBRA DOTS

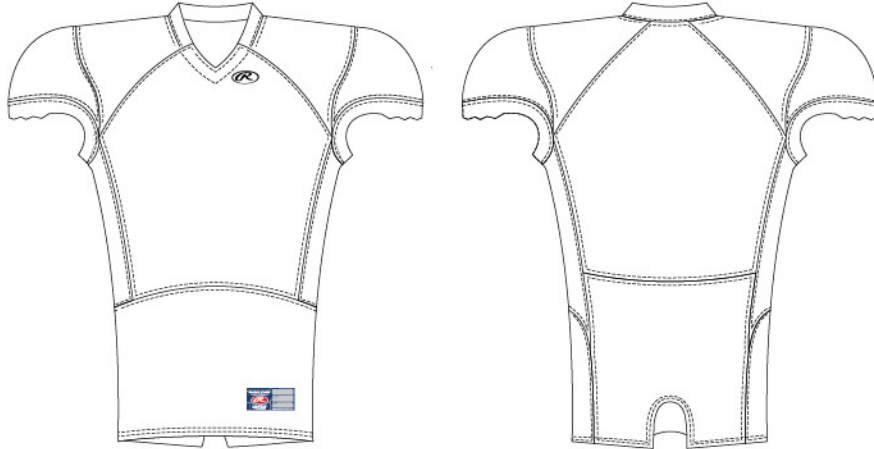


DYO

DESIGN AT MYLOCKER.RAWLINGS.COM



LJDIV47VF/YLJDIV47VF



FEATURES:

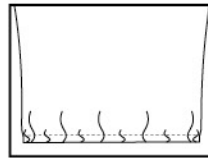
- Power Mesh sublimated diversity jersey
- Adult Sizes: S - 5XL
- Youth Sizes: S - 2XL

FABRICS:

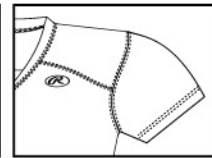


S/347

OPTIONS:



NO TUCK



NFSL



VAPORFUSION™ COLOR OFFERING:

B	W	GC	PT	SG	BG	GR	DSW	DB	MA	C	HP	LP	TR	S	TX	BO	TO	MG	CMB	CMT	CMG	OG	VG	LT	LG	YLW	LIME	FLG	K	DG	TE	AQ	MB	FLB	CB	CAB	AF	R	N	MN	PU
Black	White	Giants Cream	Putty	Silver Grey	Blue Grey	Graphite	Dark Shadow	Dark Brown	Maroon	Cardinal	Hot Pink	Light Pink	True Red	Scarlet	Texas Orange	Burnt Orange	Tennessee Orange	Military Green	Camo Brown	Camo Tan	Camo Green	Old Gold	Vegas Gold	Light Old Gold	Light Gold	Yellow	Lime Green	Flourescent Green	Kelly Green	Dark green	Teal	Aqua	Marlin Blue	Flourescent Blue	Columbia Blue	Carolina Blue	A.F.A. Blue	Royal	Navy	Midnight Navy	Purple

DESIGN AT MYLOCKER.RAWLINGS.COM



AGGIE



WINGBACK



FLAG



CHECK



CHECK 0.5



ELECTRIC



CAMO



DIGICAMO



FADE



SOLID



OHIO



BEARCAT



STREAK



PREDATOR



DIGITAL FADE



ZEBRA DOTS

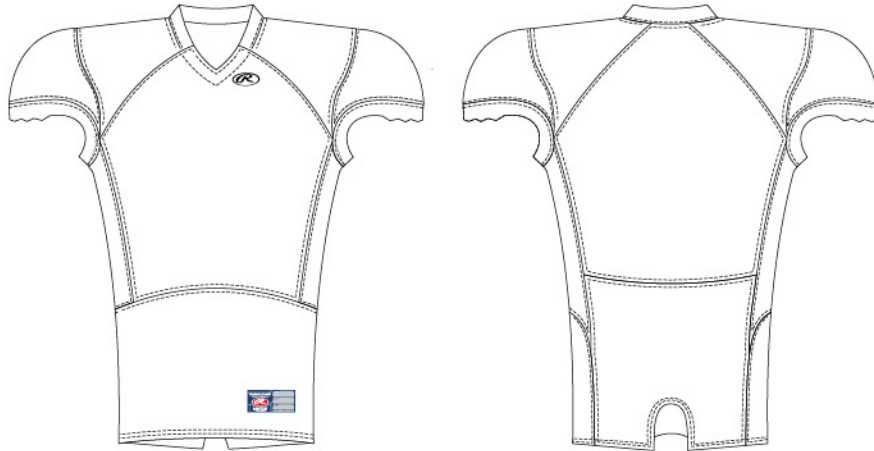


DYO

DESIGN AT MYLOCKER.RAWLINGS.COM



PJMZ47



FEATURES:

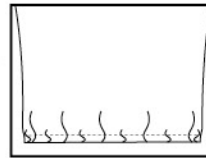
- Power Mesh sublimated MZ jersey
- Adult Sizes: XS - 5XL
- Inserts available in S/47 and S/347

FABRICS:

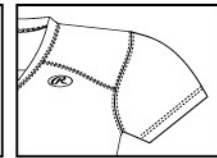


S/347

OPTIONS:



NO TUCK



NFSL



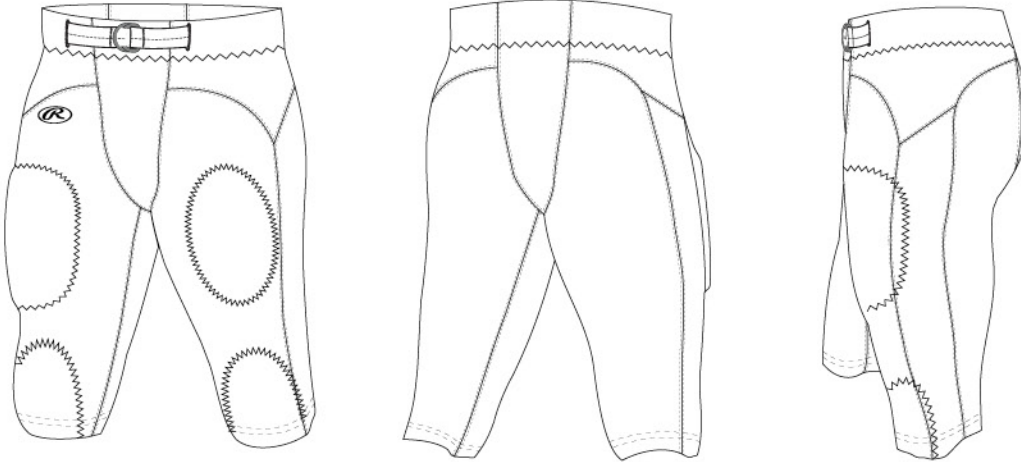
VAPORFUSION™ COLOR OFFERING:

B	W	GC	PT	SG	BG	GR	DSW	DB	MA	C	HP	LP	TR	S	TX	BO	TO	MG	CMB	CMT	CMG	OG	VG	LT	LG	YLW	LIME	FLG	K	DG	TE	AQ	MB	FLB	CB	CAB	AF	R	N	MN	PU
Black	White	Giants Cream	Putty	Silver Grey	Blue Grey	Graphite	Dark Shadow	Dark Brown	Maroon	Cardinal	Hot Pink	Light Pink	True Red	Scarlet	Texas Orange	Burnt Orange	Tennessee Orange	Military Green	Camo Brown	Camo Tan	Camo Green	Old Gold	Vegas Gold	Light Old Gold	Light Gold	Yellow	Lime Green	Flourescent Green	Kelly Green	Dark green	Teal	Aqua	Marlin Blue	Flourescent Blue	Columbia Blue	Carolina Blue	A.F.A. Blue	Royal	Navy	Midnight Navy	Purple

DESIGN AT MYLOCKER.RAWLINGS.COM



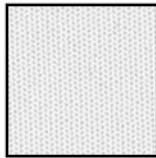
PPMZ



FEATURES:

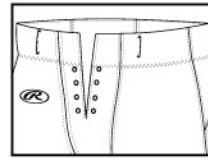
- Stretch Woven sublimated MZ pant
- Adult Sizes: XS - 5XL
- Inserts available in S/47 and S/347

FABRICS:



S/147

OPTIONS:



FLY



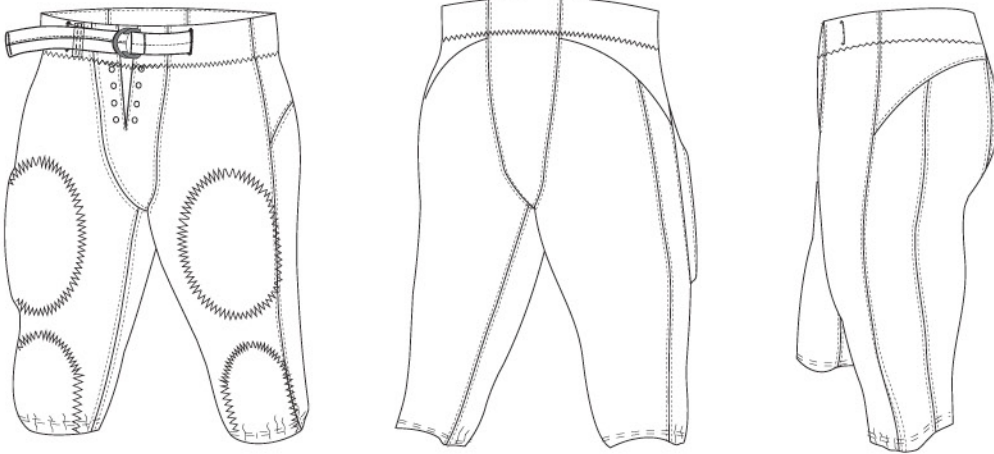
VAPORFUSION™ COLOR OFFERING:

B	W	GC	PT	SG	BG	GR	DSW	DB	MA	C	HP	LP	TR	S	TX	BO	TO	MG	CMB	CMT	CMG	OG	VG	LT	LG	YLW	LIME	FLG	K	DG	TE	AQ	MB	FLB	CB	CAB	AF	R	N	MN	PU
Black	White	Giants Cream	Putty	Silver Grey	Blue Grey	Graphite	Dark Shadow	Dark Brown	Maroon	Cardinal	Hot Pink	Light Pink	True Red	Scarlet	Texas Orange	Burnt Orange	Tennessee Orange	Military Green	Camo Brown	Camo Tan	Camo Green	Old Gold	Vegas Gold	Light Old Gold	Light Gold	Yellow	Lime Green	Flourescent Green	Kelly Green	Dark green	Teal	Aqua	Marlin Blue	Flourescent Blue	Columbia Blue	Carolina Blue	A.F.A. Blue	Royal	Navy	Midnight Navy	Purple

DESIGN AT MYLOCKER.RAWLINGS.COM



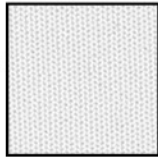
PPVF/YPPVF



FEATURES:

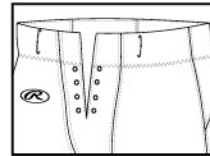
- Stretch Woven sublimated compression pant
- Adult Sizes: XS - 5XL
- Youth Sizes: XS - 2XL
- Inserts available in S/109 and S/347

FABRICS:



S/147

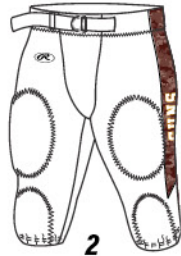
OPTIONS:



FLY



1



2



3



4



5



6



7



8

VAPORFUSION™ COLOR OFFERING:

B	W	GC	PT	SG	BG	GR	DSW	DB	MA	C	HP	LP	TR	S	TX	BO	TO	MG	CMB	CMT	CMG	OG	VG	LT	LG	YLW	LIME	FLG	K	DG	TE	AQ	MB	FLB	CB	CAB	AF	R	N	MN	PU
Black	White	Giants Cream	Putty	Silver Grey	Blue Grey	Graphite	Dark Shadow	Dark Brown	Maroon	Cardinal	Hot Pink	Light Pink	True Red	Scarlet	Texas Orange	Burnt Orange	Tennessee Orange	Military Green	Camo Brown	Camo Tan	Camo Green	Old Gold	Vegas Gold	Light Old Gold	Light Gold	Yellow	Lime Green	Flourescent Green	Kelly Green	Dark green	Teal	Aqua	Marlin Blue	Flourescent Blue	Columbia Blue	Carolina Blue	A.F.A. Blue	Royal	Navy	Midnight Navy	Purple

DESIGN AT MYLOCKER.RAWLINGS.COM



9



AGGIE



WINGBACK



FLAG



CHECK



CHECK 0.5



ELECTRIC



CAMO



DIGICAMO



FADE



SOLID



OHIO



BEARCAT



STREAK



PREDATOR



DIGITAL FADE



ZEBRA DOTS

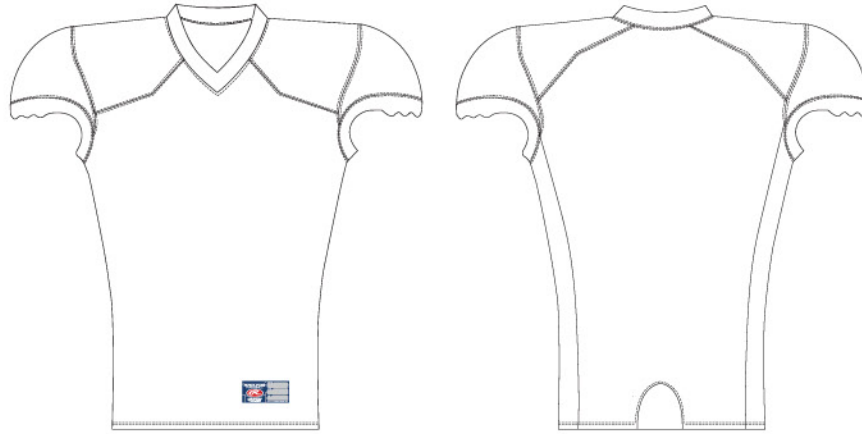


DYO

DESIGN AT MYLOCKER.RAWLINGS.COM



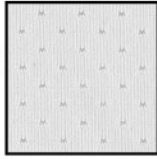
VFCJ/YVFCJ



FEATURES:

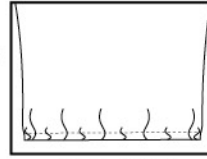
- Speed Mesh sublimated League jersey
- Adult Sizes: XS - 5XL
- Youth Sizes: S - 2XL

FABRICS:

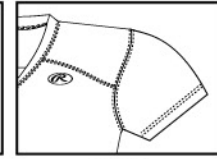


S/247

OPTIONS:



NO TUCK



NFSL



VAPORFUSION™ COLOR OFFERING:

B	W	GC	PT	SG	BG	GR	DSW	DB	MA	C	HP	LP	TR	S	TX	BO	TO	MG	CMB	CMT	CMG	OG	VG	LT	LG	YLW	LIME	FLG	K	DG	TE	AQ	MB	FLB	CB	CAB	AF	R	N	MN	PU
Black	White	Giants Cream	Putty	Silver Grey	Blue Grey	Graphite	Dark Shadow	Dark Brown	Maroon	Cardinal	Hot Pink	Light Pink	True Red	Scarlet	Texas Orange	Burnt Orange	Tennessee Orange	Military Green	Camo Brown	Camo Tan	Camo Green	Old Gold	Vegas Gold	Light Old Gold	Light Gold	Yellow	Lime Green	Flourescent Green	Kelly Green	Dark green	Teal	Aqua	Marlin Blue	Flourescent Blue	Columbia Blue	Carolina Blue	A.F.A. Blue	Royal	Navy	Midnight Navy	Purple

DESIGN AT MYLOCKER.RAWLINGS.COM



A



B



C



D



E



AGGIE



WINGBACK



FLAG



CHECK



CHECK 0.5



ELECTRIC



CAMO



DIGICAMO



FADE



SOLID



OHIO



BEARCAT



STREAK



PREDATOR



DIGITAL FADE



ZEBRA DOTS



MZ

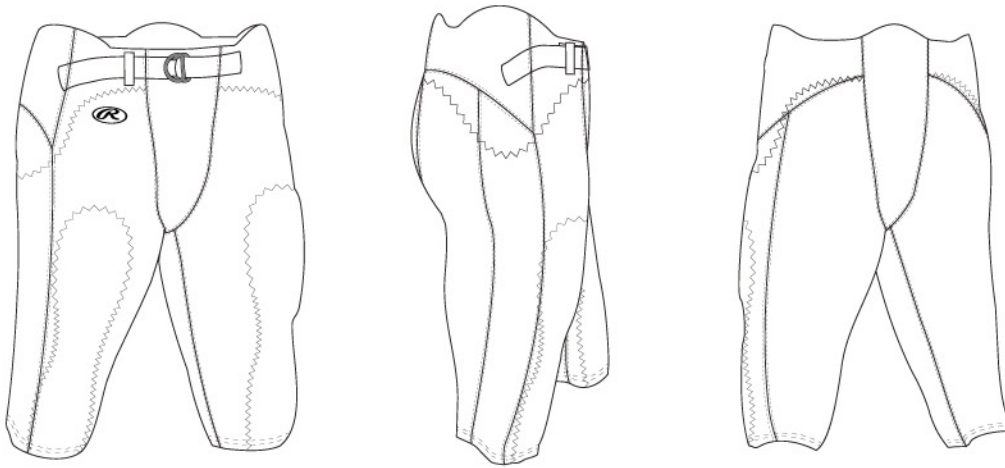


DYO

DESIGN AT MYLOCKER.RAWLINGS.COM



VFP-7P/YVFP-7P



FEATURES:

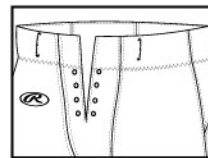
- Recreational sublimated integrated pant
- Adult Sizes: XS - 5XL
- Youth Sizes: XS - 2XL

FABRICS:



S/109

OPTIONS:



FLY



1



2



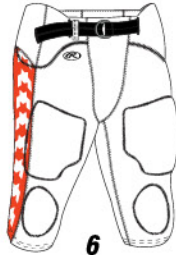
3



4



5



6



7



8

VAPORFUSION™ COLOR OFFERING:

B	W	GC	PT	SG	BG	GR	DSW	DB	MA	C	HP	LP	TR	S	TX	BO	TO	MG	CMB	CMT	CMG	OG	VG	LT	LG	YLW	LIME	FLG	K	DG	TE	AQ	MB	FLB	CB	CAB	AF	R	N	MN	PU
Black	White	Giants Cream	Putty	Silver Grey	Blue Grey	Graphite	Dark Shadow	Dark Brown	Maroon	Cardinal	Hot Pink	Light Pink	True Red	Scarlet	Texas Orange	Burnt Orange	Tennessee Orange	Military Green	Camo Brown	Camo Tan	Camo Green	Old Gold	Vegas Gold	Light Old Gold	Light Gold	Yellow	Lime Green	Flourescent Green	Kelly Green	Dark green	Teal	Aqua	Marlin Blue	Flourescent Blue	Columbia Blue	Carolina Blue	A.F.A. Blue	Royal	Navy	Midnight Navy	Purple

DESIGN AT MYLOCKER.RAWLINGS.COM



CUSTOM UNIFORMS
 INTEGRATED PANT - VFP-7P/YVFP-7P



9



AGGIE



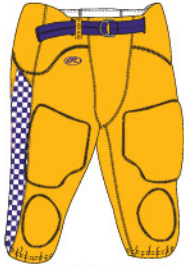
WINGBACK



FLAG



CHECK



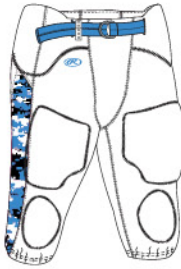
CHECK 0.5



ELECTRIC



CAMO



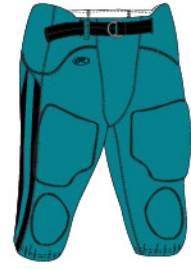
DIGICAMO



FADE



SOLID



OHIO



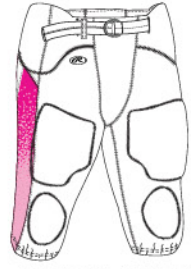
BEARCAT



STREAK



PREDATOR



DIGITAL FADE



ZEBRA DOTS

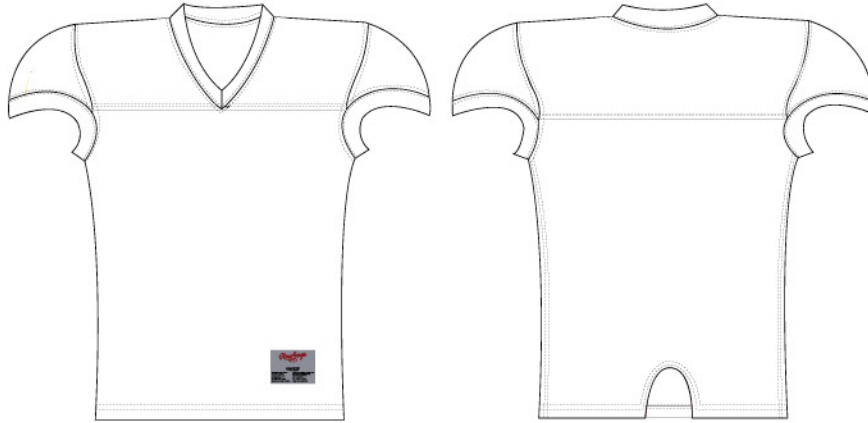


DYO

DESIGN AT MYLOCKER.RAWLINGS.COM



RVFJ/YRVFJ



FEATURES:

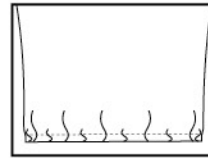
- Sublimated reversible jersey
- Adult Sizes: XS - 5XL
- Youth Sizes: S - 2XL
- Inserts available in S/247

FABRICS:



S/287

OPTIONS:



NO TUCK



4



7



8



MZ



M



FG



DYO

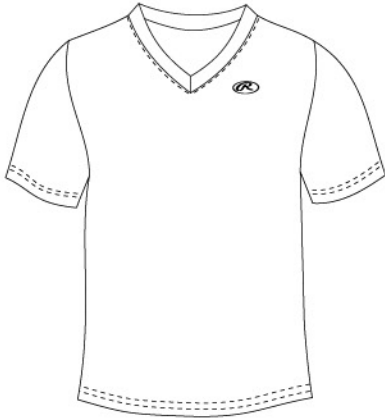
VAPORFUSION™ COLOR OFFERING:

B	W	GC	PT	SG	BG	GR	DSW	DB	MA	C	HP	LP	TR	S	TX	BO	TO	MG	CMB	CMT	CMG	OG	VG	LT	LG	YLW	LIME	FLG	K	DG	TE	AQ	MB	FLB	CB	CAB	AF	R	N	MN	PU
Black	White	Giants Cream	Putty	Silver Grey	Blue Grey	Graphite	Dark Shadow	Dark Brown	Maroon	Cardinal	Hot Pink	Light Pink	True Red	Scarlet	Texas Orange	Burnt Orange	Tennessee Orange	Military Green	Camo Brown	Camo Tan	Camo Green	Old Gold	Vegas Gold	Light Old Gold	Light Gold	Yellow	Lime Green	Flourescent Green	Kelly Green	Dark green	Teal	Aqua	Marin Blue	Flourescent Blue	Columbia Blue	Carolina Blue	A.F.A. Blue	Royal	Navy	Midnight Navy	Purple

DESIGN AT MYLOCKER.RAWLINGS.COM



FFVN/YFFVN



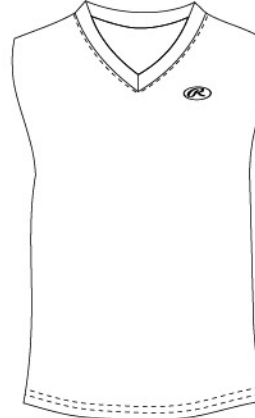
FEATURES:

- Set-in sleeve V-neck
- Classic fit
- Straight hem
- Adult Sizes: S - 3XL
- Youth Sizes: S - XL



S/36

FFSL/YFFSL



FEATURES:

- Sleeveless V-neck
- Classic fit
- Straight hem
- Adult Sizes: S - 3XL
- Youth Sizes: S - XL



S/36



1



2



3



4



5



6



7



DYO

VAPORFUSION™ COLOR OFFERING:

B	W	GC	PT	SG	BG	GR	DSW	DB	MA	C	HP	LP	TR	S	TX	BO	TO	MG	CMB	CMT	CMG	OG	VG	LT	LG	YLW	LIME	FLG	K	DG	TE	AQ	MB	FLB	CB	CAB	AF	R	N	MN	PU
Black	White	Giants Cream	Putty	Silver Grey	Blue Grey	Graphite	Dark Shadow	Dark Brown	Maroon	Cardinal	Hot Pink	Light Pink	True Red	Scarlet	Texas Orange	Burnt Orange	Tennessee Orange	Military Green	Camo Brown	Camo Tan	Camo Green	Old Gold	Vegas Gold	Light Old Gold	Light Gold	Yellow	Lime Green	Flourescent Green	Kelly Green	Dark green	Teal	Aqua	Marlin Blue	Flourescent Blue	Columbia Blue	Carolina Blue	A.F.A. Blue	Royal	Navy	Midnight Navy	Purple

DESIGN AT MYLOCKER.RAWLINGS.COM



CONTACT YOUR LOCAL REP



CONTACT YOUR LOCAL REP



Anaheim One, two or three colors	ABCDEFGHIJKLMNOPQRSTUVWXYZ
Anaheim One, two or three colors 2", 3", 4", 6", 8", 10" and 12"	0123456789
Arizona One or two colors	ABCDEFGHIJKLMNOPQRSTUVWXYZ
Arizona 47 - Trim Version One, two or three colors Adult: 3", 4", 6", 8" and 10" Youth: 3", 4" and 6"	0123456789
Brush Script* One, two or three colors	<i>ABCDEFGHIJKLMNOPQRSTUVWXYZ abcdefghijklmnopqrstuvwxyz</i>
Brush Script One, two or three colors 2", 3", 4", 6", 8", 10" and 12"	0123456789
Connecticut One, two or three colors	ABCDEFGHIJKLMNOPQRSTUVWXYZ
Connecticut One, two or three colors 3", 4", 6", 8", 10" and 12"	0123456789
Fancy One, two or three colors	ABCDEFGHIJKLMNOPQRSTUVWXYZ
Fancy 47 - Trim Version One, two or three colors 2", 3", 4", 6", 8", 10" and 12"	0123456789
Full Block One, two or three colors	ABCDEFGHIJKLMNOPQRSTUVWXYZ
Full Block One, two or three colors 2", 3", 4", 6", 8", 10" and 12"	0123456789
Maryland One, two or three colors	ABCDEFGHIJKLMNOPQRSTUVWXYZ
Maryland One, two or three colors 3", 4", 6", 8", 10" and 12"	0123456789

• VaporFusion™ Twill and VaporFusion™ Sublimation fonts can be chosen in one, two, or three colors

• Standard rule for Brush Script and Script is the first letter is upper case and all other letters are lower case. Ex: High School. Customer must specify that all upper case letters are requested.



Method One, two or three colors	A B C D E F G H I J K L M N O P Q R S T U V W X Y Z
Method One, two or three colors 2", 3", 4", 6", 8", 10" and 12"	0 1 2 3 4 5 6 7 8 9
Miami One or two colors	A B C D E F G H I J K L M N O P Q R S T U V W X Y Z
Miami 47 - Trim Version One, two or three colors 2", 3", 4", 6", 8", 10" and 12"	0 1 2 3 4 5 6 7 8 9
Monolith One, two or three colors	A B C D E F G H I J K L M N O P Q R S T U V W X Y Z
Monolith One, two or three colors 2", 3", 4", 6", 8", 10" and 12"	0 1 2 3 4 5 6 7 8 9
Plain Block One, two or three colors	A B C D E F G H I J K L M N O P Q R S T U V W X Y Z
Plain Block One, two or three colors 2", 3", 4", 6", 8", 10" and 12"	0 1 2 3 4 5 6 7 8 9
Rock One, two or three colors	A B C D E F G H I J K L M N O P Q R S T U V W X Y Z
Rock One, two or three colors 2", 3", 4", 6", 8", 10" and 12"	0 1 2 3 4 5 6 7 8 9
Script* One, two or three colors	A B C D E F G H I J K L M N O P Q R S T U V W X Y Z <i>abcdefghijklmnopqrstuvwxyz</i>
Stinger One, two or three colors	A B C D E F G H I J K L M N O P Q R S T U V W X Y Z
Stinger One, two or three colors 2", 3", 4", 6", 8", 10" and 12"	0 1 2 3 4 5 6 7 8 9

• VaporFusion™ Twill and VaporFusion™ Sublimation fonts can be chosen in one, two, or three colors

• Standard rule for Brush Script and Script is the first letter is upper case and all other letters are lower case. Ex: High School. Customer must specify that all upper case letters are requested.



VAPOR FUSION

VaporFusion™ is the process of fusing ink into fabric fibers to create permanently bonded colors. This state-of-the-art equipment is used to decorate Rawlings' finest premium fabrics and twill. VaporFusion™ is lighter, faster, and more durable.

SUBLIMATED TWILL

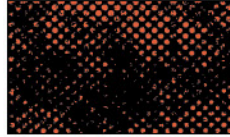
- Twill just got faster—24% lighter than standard 1-color twill
- Twill just got more functional—has more "give" than standard twill applications
- Twill just got more personal—boundless customization with 30+ colors



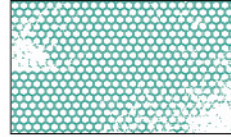
AUTO CAMO
Shown with
Color 1: Navy



AUTO DIGITAL CAMO
Shown with
Color 1: Blue Grey



BUSTED DOTS
Shown with
Color 1: Black
Color 2: Burnt Orange



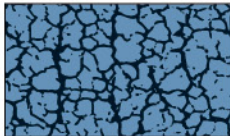
BUSTED HONEYCOMB
Shown with
Color 1: White
Color 2: Teal



CAMO
Shown with
Color 1: Scarlet
Color 2: Cardinal
Color 3: Black



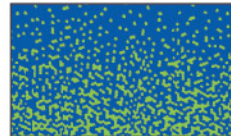
CHECK
Shown with
Color 1: Dark Green
Color 2: Kelly Green



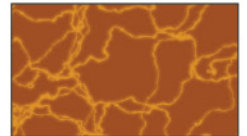
CRACKLE
Shown with
Color 1: Navy
Color 2: Columbia Blue



DIGITAL CAMO
Shown with
Color 1: White
Color 2: Royal
Color 3: Columbia Blue



DIGITAL FADE
Shown with
Color 1: Flourescent Blue
Color 2: Flourescent Green



ELECTRIC
Shown with
Color 1: Texas Orange
Color 2: Tennessee Orange



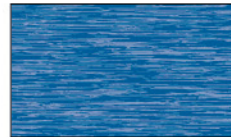
FADE
Shown with
Color 1: White
Color 2: Columbia Blue



FLANNEL
Simulated Flannel Texture



GRADIENT DOTS
Shown with
Color 1: Light Gold
Color 2: Black



HEATHER
Shown with
Color 1: Royal



HOUNDS TOOTH
Shown with
Color 1: Scarlet
Color 2: Black



PLATED
Shown with
Color 1: Dark Green
Color 2: Plate Design is
ALWAYS Silver Gray



PRO STRIPE
Shown with
Color 1: White
Color 2: Black



SCRATCH
Shown with
Color 1: Royal
Color 2: Black



SHUTTER
Shown with
Color 1: Black
Color 2: Cardinal



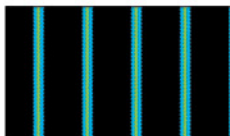
SOLID
Shown with
Color 1: Navy



SPLAT
Shown with
Color 1: Yellow
Color 2: Flourescent Green
Color 3: Purple



SPLIT
Shown with
Color 1: Columbia Blue
Color 2: Blue Gray
Color 3: Marlin Blue



TRIAD STRIPE
Shown with
Color 1: Black
Color 2: Flourescent Blue
Color 3: Flourescent Green
Color 4: Flourescent Blue



ZEBRA DOTS
Shown with
Color 1: Hot Pink
Color 2: Graphite



Stock Mascots offered in 1 or 2 colors. Must be ordered as pictured with the black portion as Color #1 and the white as Color #2. If design or color specifications are altered, the art is no longer stock and will be considered custom.

VAPOR
FUSION



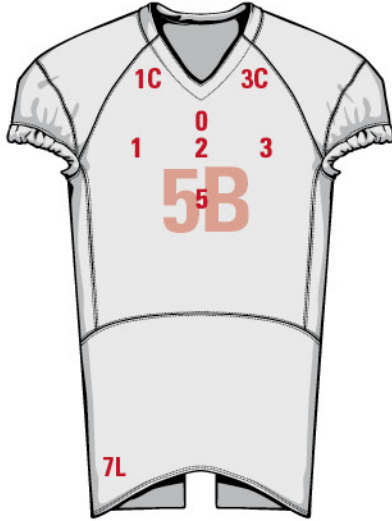
ADDITIONAL DESIGNS AT MYLOCKER.RAWLINGS.COM

 EAGLE 1	 BIRD 8	 BIRD 10	 BIRD 14	 BIRD 18	 CARDINAL 1
 RAM 1	 RAM 2	 HORSE 5	 HORSE 8	 HORSE 9	 MUSTANG 2
 BULLDOG 1	 BULLDOG 2	 BULLDOG 3	 WILDCAT 1	 PANTHER 1	 TIGER 1
 BEAR 1	 PIRATE 2	 PIRATE 3	 PIRATE 8	 SPARTAN 2	 COMIC TROJAN
 KNIGHT 2	 KNIGHT 3	 BRAVE 2	 PAW 1	 PAW 2	 PAW 11
 PAW 15	 BASEBALL 1	 DEVIL	 INSECT 3	 STAR 3	 STAR 5
 LIGHTNING 2	 MISC 3	 MISC 15	 MISC 17	 VaporFusion Only US FLAG	

These drawings are for illustration purposes only. Rawlings® expressly disclaims any rights in these mascot drawings. The customer is solely responsible for obtaining permission or a license to use proprietary marks.



FRONT



Basic Placements:

- 0 Center Chest 1/2" from V-neck (available 1 1/2" or smaller)
- 1 Upper Right Chest—7" down from shoulder seam
- 2 Upper Center Chest—1 1/2" down from neck trim
- 3 Upper Left Chest—7" down from shoulder seam
- 5 Front Center—1" below name
- 5B Front center—background auto-gradient of color chosen
- 7L Opposite side locker label 2" up from edge

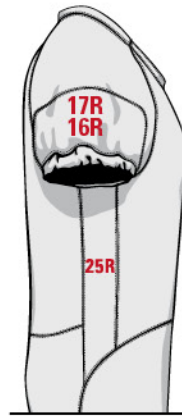
Football Specific Placements:

- 1C On right cowl—1" up from seam across from the Rawlings Oval R
- 3C On left cowl—1" up from seam. If chosen, Rawlings Oval R moves to 1C
- 5 If lettering in placement 2—1" below lettering.
If no lettering in placement 2—2" down from cowl seam, centered.
If direct embroidery in placement 0—3" down from cowl seam.

BACK



- 14P 1/2" below collar seam
- 14 3" Below collar seam
- 30 Full back—6" below collar seam
on football jersey 2" down from cowl seam
- 30N 8" below collar seam (room for player name)
- 30B Full back—background auto-gradient of color chosen



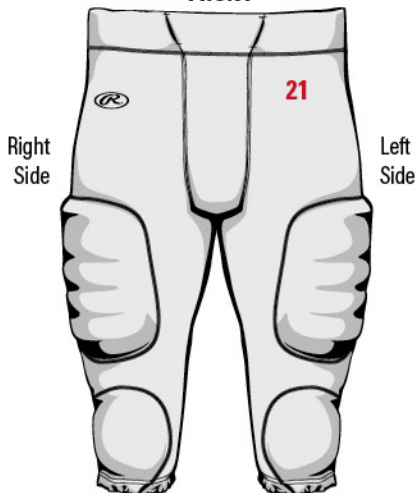
- 16 (L/R)—1/2" above sleeve seam
- 17 (L/R) center sleeve
- 25 (L/R) side of jersey inside insert
centered top to bottom

COWL VIEW



- 18 (L/R) mascot or number facing out
- 19 (L/R) mascot facing front
Placements 18 and 19 centered front
to back and neck to shoulder

FRONT

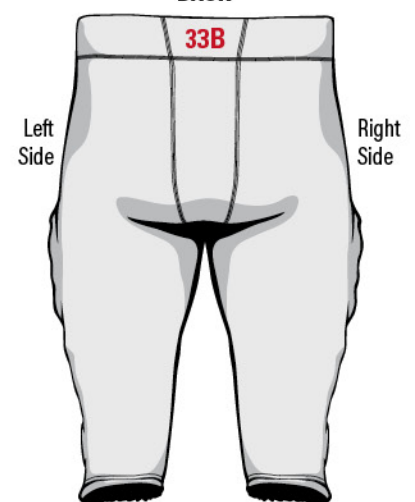


- 21 Upper Left Front
6" down from raw edge top



- 24 (L/R) Lower Side 2" up from bottom edge
- 27 (L/R) Side of pant centered from top to bottom, if it falls on a sideseam, it automatically reverts to back
- 28 (L/R) Upper Side of pant 3" down from raw edge top

BACK



- 33B Center back waistband



PLEASE SPECIFY LETTERING CONFIGURATION WHEN ORDERING



STRAIGHT

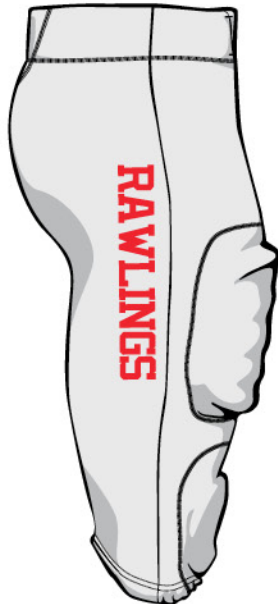
VERTICAL ARCH

BRIDGED ARCH

• Specify end and center height



C8



VERTICAL STRAIGHT

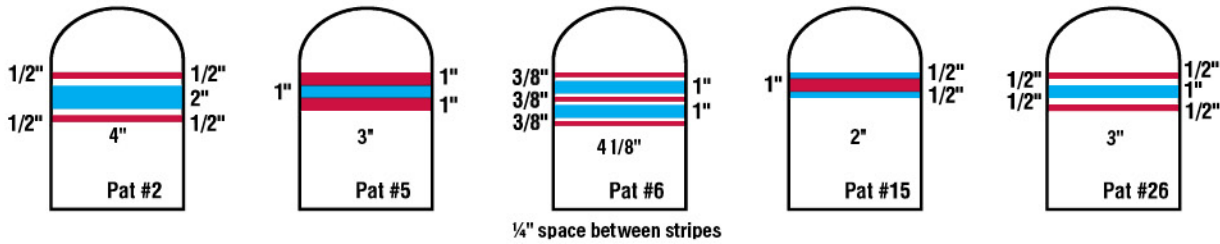
• Letters down right side of pant or jersey insert, and going up left side





VAPORFUSION™ STOCK FOOTBALL SLEEVE STRIPING PATTERNS

When ordering sleeve stripes, specify colors from sleeve end to shoulder.



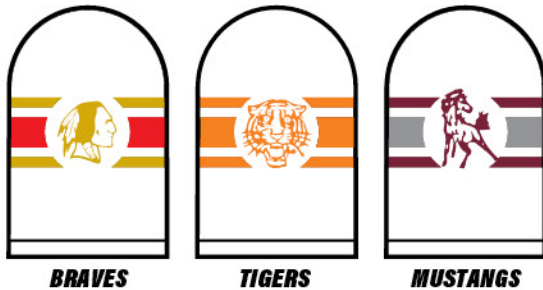
Sleeve stripe patterns showing red and blue stripes in which the red and blue colors do not touch, are also available as a one color sleeve stripe pattern. White indicates fabric showing through. For youth sizes medium and smaller, Rawlings cannot guarantee the fit of sleeve stripe patterns greater than 3/4" tall. If size adjustments are necessary, the customer will be notified. Rawlings cannot guarantee fit of sleeve stripe and sleeve TV number combinations when the combined height of the artwork is greater than 6".

Fit of TV numbers and sleeve stripes varies per jersey size. Please ask your customer service or sales representative for assistance.

PLACEMENT:

2" up from the bottom edge

VAPORFUSION™ STOCK FOOTBALL SLEEVE STRIPES WITH MASCOTS



See page 43 for more mascot options

All standard mascot sleeve stripes offered in 1 or 2 color with Pattern #2 sleeve stripes. Two color orders must be ordered as pictured with the top and bottom sleeve stripes and mascot as the first color and the middle stripe as the second color. If the design or color scheme is altered, the artwork will no longer be standard, but rather a custom order.

These drawings are for illustration purposes only. Rawlings' and its affiliates expressly disclaim any rights in these mascot drawings. The customer is solely responsible for obtaining permission or a license to use proprietary marks.

NOTE: All standard mascot sleeve stripes are available in the sleeve stripe Pattern #2 only.



Trim striping patterns: for neck and arm trim specify colors working from the outer edge to the edge closest to the body of the garment. For side trim, specify colors to go from front to back.



When ordering the CLSU option, specify colors from the sleeve to the jersey body.



TRIM STYLES

STYLE	#1 SOLID	#2 2 COLORS	#3 2 OR 3 COLORS	#6 2 COLORS
TRIM WIDTH				
1/8"	1/8"			
3/8"	3/8"		1/8" 1/8" 1/8"	3/16" 3/16"
1/2"	1/2"	1/8" 1/4" 1/8"	1/6" 1/6" 1/6"	1/4" 1/4"
1"	1"	1/4" 1/2" 1/4"	1/3" 1/3" 1/3"	1/2" 1/2"
2"	2"	1/2" 1" 1/2"	5/8" 5/8" 5/8"	1" 1"
3"	3"	3/4" 1 1/2" 3/4"	1" 1" 1"	1 1/2" 1 1/2"

VAPORFUSION™ COLOR OFFERING:

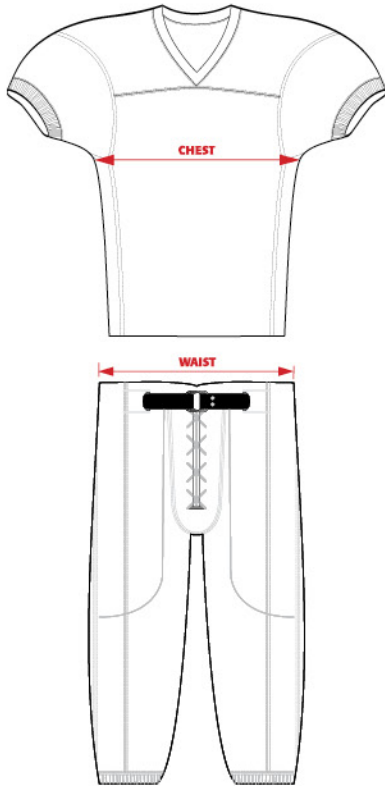
B	W	GC	PT	SG	BG	GR	DSW	DB	MA	C	HP	LP	TR	S	TX	BO	TO	MG	CMB	CMT	CMG	OG	VG	LT	LG	YLW	LIME	FLG	K	DG	TE	AQ	MB	FLB	CB	CAB	AF	R	N	MN	PU
Black	White	Giants Cream	Puffy	Silver Grey	Blue Grey	Graphite	Dark Shadow	Dark Brown	Maroon	Cardinal	Hot Pink	Light Pink	True Red	Scarlet	Texas Orange	Burnt Orange	Tennessee Orange	Military Green	Camo Brown	Camo Tan	Camo Green	Old Gold	Vegas Gold	Light Old Gold	Light Gold	Yellow	Lime Green	Flourescent green	Kelly Green	Dark Green	Teal	Aqua	Marlin Blue	Flourescent Blue	Columbia Blue	Carolina Blue	A.T.A. Blue	Royal	Navy	Midnight Navy	Purple

MATCHING COLORS:

The sublimation process involves many variables that affect the final color of the product. Every possible effort is made to match colors as closely as these variables will permit. Slight color differences may occur between and within orders of sublimated product. All orders are accepted with the understanding that the purchaser realizes these conditions and accepts responsibility within reasonable tolerances.

Color differences between sublimated and non-sublimated and fabrics may occur due to different coloration methods.

Matching sublimated and non-sublimated fabrics within garments or uniforms is highly discouraged.



HOW TO MEASURE:

Chest — The tape should be placed under the arms level across back muscles and chest. Have the person take a deep breath when reading the measurement.

Waist — The tape should be placed around the waist above the top of the hip bone. It should be positioned approximately where the person wears a belt.

NOTES:

1. Always use a cloth tailor's tape when taking body measurements. Place the index finger and middle finger between tape and body while holding the tape with thumb.
2. For circumference measurements of the body, the tape measure should not be pulled too tight.
3. For garment size, use the tape measurement to the next largest inch.
4. Garment sizing is determined from the actual body measurements. A specific size garment, e.g. size 42, is designed to fit a body with a chest measurement of 42".

The actual size of the pattern and garment will be determined by:

- a. Requirements of the sport (designed for loose or tight fit).
- b. Type of fabric intended for the garment design.
- c. Special garment styles or designs. When the above adjustments have been factored into the pattern, the garment should fit the proper size body as indicated on the size label of garment.
- d. The type and size of pads worn by the player

Rawlings® reserves the right to refuse to manufacture any order. The purchaser must maintain the right to reproduce, or have reproduced, proprietary or protected commercial property.

MEN'S SIZING

JERSEY SIZE	S	M	L	XL	2XL	3XL	4XL	5XL
Chest in inches	36	40	44	48	52	56	60	64
PANT SIZE	S	M	L	XL	2XL	3XL	4XL	5XL
Waist in inches	28	32	36	40	44	48	52	56

YOUTH SIZING

JERSEY SIZE	S	M	L	XL	2XL
Chest in inches	27	31	35	39	43
PANT SIZE	S	M	L	XL	2XL
Waist in inches	23	25	27	29	31

BRANDING

The Oval R® cannot be removed from Rawlings® garments

MINIMUM ORDER POLICY

1 Custom Garment	MO1	\$111.10
2-5 Custom Garments	MO2-5	\$77.80
Stock fill in order less than \$75.00		\$11.10

Note: These charges are in addition to the regular price per order and are suggested retail prices.

All verbal changes or cancellations must be followed up and confirmed via fax or email to Rawlings® Customer Service of what is to be changed or canceled. Rawlings® will then reconfirm via fax or email that the change or cancellation was accepted or processed.

OVERSIZE CHARGES

Oversize Charges		OS - \$11.10
Alpha Sizing	Men's Jerseys	3XL-5XL
	Men's Pants/Shorts	3XL-5XL

YOUTH BY WEIGHT SIZE CHART

Youth Size	YXS	YS	YM	YL	YXL	Y2XL
LBS	Under 40	40-60	60-80	80-100	100-120	120+

Note: Fit is a personal preference and can vary greatly between athletes. Please do a fitting to ensure proper sizing. Rawlings is not responsible for sizing determinations based on the above weight chart.



UNIFORM CARE

WASH UNIFORMS PRIOR TO FIRST USE AND IMMEDIATELY AFTER EACH USE. Naturally occurring PH levels in sweat may cause dye migration in first use. We recommend a detergent like Tide® Plus Coldwater Clean. Prior to washing in cool water, turning the garments inside out will help preserve Twill, Vapor Fusion™, HS Fusion, and Embroidery. Claspings Velcro® prior to washing may help prevent snagging or picking.

DO NOT WASH UNIFORMS WITH OTHER ITEMS. Bleeding may occur.

DO NOT USE BLEACH. Bleach will deteriorate fabric fibers and may cause color loss.

DO NOT OVERLOAD WASHER OR DRYER. Hang dry is recommended for best results. In the dryer, overloading may cause the uniforms to stick together, especially those with HS Fusion. Remove garments immediately after both wash and dry cycles. To avoid static and lint build-up, use an anti-static agent such as Bounce® Dryer Sheets.

DO NOT EXPOSE UNIFORMS TO HIGH HEAT. Excessive heat is the enemy of your uniform. Heat presses, ironing, dry cleaning, or heat transfers may cause dye migration and break down fabric fibers. Excessive heat, especially in dryers, can cause shrinkage above normal tolerances, cause HS Fusion to crack, and Twill to wrinkle. If you use a dryer, please use a 'damp dry' or 'air dry' setting.

STORE IN A COOL, DRY AREA, AWAY FROM DIRECT SUNLIGHT. Excessive sunlight may cause discoloration.

Heavily soiled garments (grass, dirt, clay mud), pre-treatment is recommended

- Spray on products such as Spray 'n Wash®, Shout®, or ESPRO® cleaner have been tested with positive results.
- Products such as Shout® Advanced Action Gel can be used for stubborn stains.
- For blood stains, it is best to rinse in cool water as soon as possible, and if necessary, soak in cool water before washing. One of the above pre-treatments can also be used, or an oxygen-based laundry booster such as OxiClean® can also be used.
- For ink stains, use hair spray as soon as possible. Delaying the application of hair spray may decrease results. Spray on stain and rub until the ink is gone. Wash as normal.

QUALITY GUARANTEE

1-year warranty starts from date of customer receipt of Rawlings® uniforms. Warranty covers any defect or condition of a uniform that can be attributed to a manufacturing error, or otherwise deemed to be a Rawlings® quality concern.

This does not include damage or discoloration that may occur from excessive collisions or abrasions, customer alteration, improper care, or circumstances beyond Rawlings® control. Please use the above uniform care instructions for best results.

ZoneFlex™ Uniforms: In-season warranty only on Rawlings® ZoneFlex™ uniforms. All conditions apply same as the regular "1-year warranty", notwithstanding the purchased-in season duration limitation.

Our caring service representatives are standing by for your questions at 1-800-729-5464 (800-RAWLINGS).



SALES FORCE

CORPORATE HEADQUARTERS

RAWLINGS
510 Maryville University Drive
Suite 110
St. Louis, MO 63141 USA
Toll Free 800.RAWLINGS
Toll Free Fax 800.468.7767
314.819.2800

EASTON
3500 Willow Lane
Thousand Oaks, CA 91361 USA
Toll Free 800.EASTON
Toll Free Fax 800.800.8734
805.953.4800

TEAM SALES

DIEBOLD, BOB
SENIOR VP, GLOBAL SALES
510 Maryville University Drive
Suite 110
St. Louis, MO 63141
bdiebold@rawlings.com

BRACCI, DAVE
NATIONAL DIRECTOR OF TEAM SALES
2533 South Coast Highway 101
Suite 223
Cardiff, CA 92007
760.943.0837
760.420.8809
dbracci@rawlings.com

CENTRAL-EAST REGION

CZERWIEN, CHRIS
SALES DIRECTOR CENTRAL-EAST
1617 Fair Oak Drive
Rochester Hills, MI 48309
248.608.1275
248.608.1276 Fax
cczerwien@rawlings.com

BIEG, DAN
4608 Langtree Drive
Sappington, MO 63128
314.608.4387 Cell
dbieg@rawlings.com
EASTERN MO, SOUTHERN IL

HEPPNER, JOSH
3898 Briarbrooke Lane
Oakland Township, MI 48306
248.835.4684
jheppner@rawlings.com
NORTHERN IN, MI, NORTHWESTERN OH

HENKE, ADAM
8643 Tahoe Dr
Macedonia, OH 44056
618.691.9819
ahenke@rawlings.com
NORTHEAST/CENTRAL OH, WESTERN PA, NORTHEASTERN WV, WESTERN NY

MAUCHAN, JON
314 West 5th
West Islip, NY 11795
631.903.3376
631.669.0307 Fax option
jmauchan@rawlings.com
BROOKLYN, LONG ISLAND, NORTHERN NJ

MURRAY, BILL
9839 Log House Court
Gaithersburg, MD 20882
301.536.0250
301.515.0625 Fax
bmurray@rawlings.com
MD, EASTERN PA

NICKELL, J.W.
232 Bartholomew Boulevard
Jeffersonville, IN 47130
502.645.0532
jnckell@rawlings.com
KY, SOUTHERN IN, SOUTHWESTERN OH, SOUTHWESTERN WV

SAHLI, COLIN
5067 N Lincoln Avenue #402
Chicago, IL 60625
630.291.9484
csahli@rawlings.com
NORTHERN IL, NORTHWEST IN, SOUTHERN WI

SMITH, CARTER
90 Windermere Village Rd
Ellington, CT 06029
314.800.8049
csmith@rawlings.com
CT, RI, UPSTATE NY

SUTTON, STEVE
48 Big Wood Drive
Westfield, MA 01085
413.537.5439
ssutton@rawlings.com
MA, ME, NH, VT

WEST REGION

FAHRNEY, DAVE
SALES DIRECTOR WEST
503 Burns Circle
San Ramon, CA 94583
925.519.5814
dfahrney@rawlings.com
GUAM, HI

BEREAUD, NIC
1302 Cartagena
Newport Beach, CA 92660
619.384.7878
nbereaud@rawlings.com
AZ, SOUTHERN CA

DUNN, JUSTIN
2804 NE Parkview Court
Lee's Summit, MO 64086
913.485.0605
jdunn@rawlings.com
NORTHWEST AR, IA, KS, WESTERN MO, NE, NORTHEAST OK

HOFFMAN, NATE
7471 South Clinton Street #2531
Englewood, CO 80112
719.649.9990
nhoffman@rawlings.com
CO, NM, UT, WY

JEFFS, RAY
13710 NW 49th Avenue
Vancouver, WA 98685
518.683.8080
rjeffs@rawlings.com
AK, ID, MT, OR, WA

SCHMIT, BLAKE
5607 Green Circle Drive #210
Minnetonka, MN 55343
612.964.1099
bschmit@rawlings.com
mmurray@rawlings.com
MN, ND, SD, NORTHERN WI

STEPHENS, ERIC
1126 Polson Circle
Martinez, CA 94553
626.824.4380
estephens@rawlings.com
NORTHERN CA, NORTHERN NV

WECKERLE, STEVE
714 Via Nublado
San Clemente, CA 92672
949.275.0727
sweckerle@rawlings.com
ORANGE COUNTY CA, SAN DIEGO COUNTY CA, SOUTHERN NV

SOUTH REGION

RODRIGUEZ, BRADY
SALES DIRECTOR SOUTH
404 East Redbud Drive
Slidell, LA 70458
985.718.7075
brodriguez@rawlings.com

BENNETT, BOBBY
217 Wilshire Terrace
White, GA 30184
770.490.7912
bbennett@rawlings.com
GA, EASTERN TN

BOWMAN, TIM
12304 Pepperidge Avenue
Denton, TX 76207
214.850.1510
940.240.9770 Fax option
tbowman@rawlings.com
CENTRAL AND WESTERN OK, CENTRAL AND NORTHERN TX

DOMINGUEZ, CHRISTIAN
4731 SW 99th Ct
Miami, FL 33165
309.620.4241
cdominguez@rawlings.com
FL

MARANO, TONY
500 Eagle Nest Drive
Camden, DE 19934
302.983.4865
tmarano@rawlings.com
DE, SOUTHERN NJ, VA

PAYTES, NORMAN
1500 Ashley Creek Drive
Matthews, NC 28105
540.220.7361
npaytes@rawlings.com
NC, SC, SOUTHWESTERN VA

RENFROE, DAVID
861 Arundell St
Tuscaloosa, AL 35406
662.934.6654
drenfro@rawlings.com
AL, EASTERN AR, FL PANHANDLE, MS, WESTERN TN

WHITE, CHARLIE
1258 W 23rd
Houston, TX 77008
630.251.6778
cwhite@rawlings.com
LA, WESTERN AND SOUTHERN TX

INTERNATIONAL SALES

ROBERT, RALPH
DIRECTOR OF INTERNATIONAL SALES
510 Maryville University Drive
Suite 110
St. Louis, MO 63141 USA
314.819.2813
314.819.2990 Fax
rrobert@rawlings.com

CANADA HEAD OFFICE

BEATTY, RANDY
GENERAL MANAGER
131 Savannah Oaks Drive
Brantford, Ontario N3V 1E8
519.750.1380 x2610
rbeatty@rawlings.com

SHIPLEY, JASON
BUSINESS UNIT DIRECTOR
519.750.1380 x2625
jshipley@rawlings.com

ROBINSON, ERIC
NATIONAL ACCOUNT SALES MANAGER
226.387.1923
erobinson@rawlings.com

SARRAZIN, KIM
TEAM SALES MANAGER
514.606.8172
ksarrazin@rawlings.com

BROCK, DEBBIE
SALES/OPERATIONS MANAGER
519.750.1380 x 2612
dbrock@rawlings.com

BRITISH COLUMBIA

SHADOW AGENCY
ROB HAYEUR
604.275.7734
rhayeur@shadowagency.ca
MATT WELSH
604.828.1986
mwelsh@shadowagency.ca

NORTHERN ALBERTA

SPARROW OUTFITTERS
SCOTT STEVENSON
780.913.7382
sparrowoutfitters@icloud.com

SOUTHERN ALBERTA

MCNEIL SPORTS AGENCY
ASHLEY MCNEIL
403.970.7492
mcneilashley@icloud.com

ONTARIO LAKEHEAD, MANITOBA, SASKATCHEWAN

H&W RECREATIONAL MARKETING
BRENT HOBBDAY
204.444.3909
bhobbday@highspeedcrow.ca

SOUTHWESTERN ONTARIO

BIG RED SPORTS AGENCY
JONAH EVANS
226.583.1934
jevans@bigredsports.com

CENTRAL AND NORTHEASTERN ONTARIO

RABJOHN SPORTS
JASON RABJOHN
416.898.7389
jrabjohnsports@gmail.com

WESTERN QUEBEC (INCLUDING OTTAWA VALLEY)

DMB SPORTS
MARTIN BLANCHET
514.771.4874
martin.blanchet@dmbssport.ca

EASTERN QUEBEC

AGENCE SPORT AXION
BRIAN MASSIE/JOSUE PELEY
418.956.6277
agencebrianmassie@gmail.com
jpeley@sportaxion.ca

ATLANTIC CANADA

DOUCETTE SPORTS AGENCY
KEVIN DOUCETTE
506.384.7453
dsagency@nbnet.nb.ca



@RawlingsSports
@RawlingsSB



facebook.com/Rawlings
facebook.com/RawlingsSoftball



@RawlingsSG
@RawlingsSB

